

# U.S. Drought Monitor

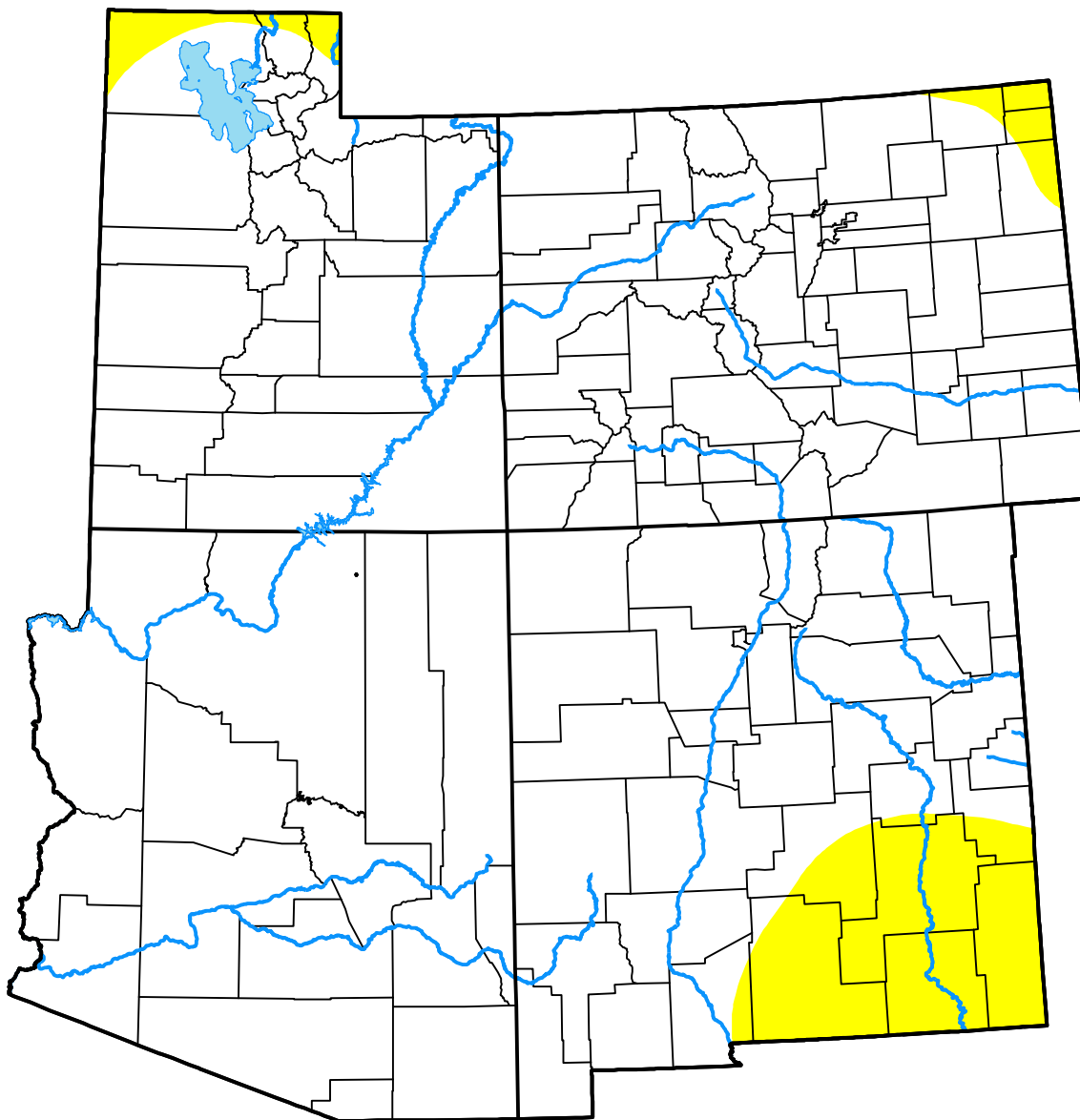
## Four Corners (States)

**March 13, 2001**  
*(Released Thursday, Mar. 15, 2001)*

Valid 7 a.m. EST

*Drought Conditions (Percent Area)*

	None	D0-D4	D1-D4	D2-D4	D3-D4	D4
<b>Current</b>	92.80	7.20	0.00	0.00	0.00	0.00
<b>Last Week</b> <i>03-06-2001</i>	93.53	6.47	0.00	0.00	0.00	0.00
<b>3 Months Ago</b> <i>12-12-2000</i>	83.27	16.73	1.80	0.00	0.00	0.00
<b>Start of Calendar Year</b> <i>01-02-2001</i>	88.15	11.85	1.76	0.00	0.00	0.00
<b>Start of Water Year</b> <i>09-26-2000</i>	16.80	83.20	35.92	9.98	0.00	0.00
<b>One Year Ago</b> <i>03-14-2000</i>	61.12	38.88	16.26	1.67	0.00	0.00



***Intensity:***

- None
- D0 Abnormally Dry
- D1 Moderate Drought
- D2 Severe Drought
- D3 Extreme Drought
- D4 Exceptional Drought

*The Drought Monitor focuses on broad-scale conditions. Local conditions may vary. For more information on the Drought Monitor, go to <https://droughtmonitor.unl.edu/About.aspx>*

***Author:***

Michael Hayes  
 National Drought Mitigation Center

