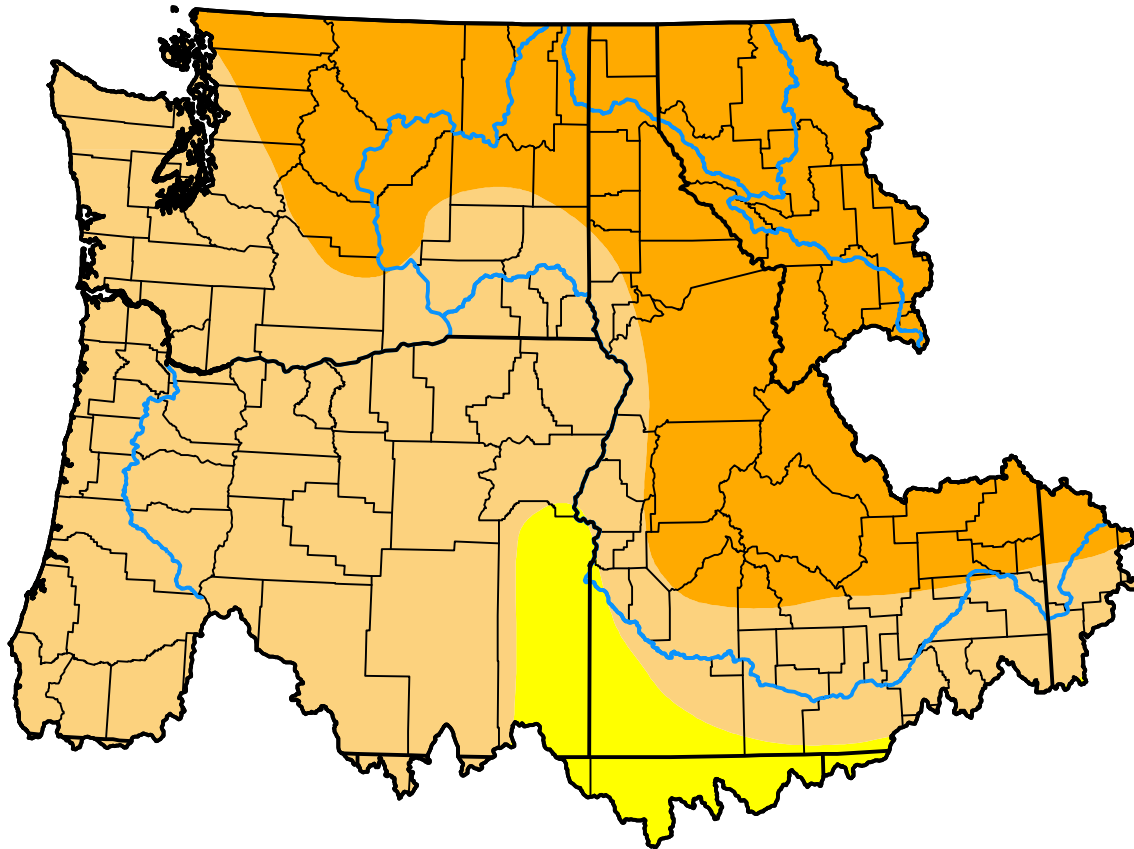


# U.S. Drought Monitor Northwest RFC

**March 13, 2001**  
(Released Thursday, Mar. 15, 2001)  
Valid 7 a.m. EST



*Drought Conditions (Percent Area)*

	None	D0	D1	D2	D3	D4
<b>Current</b>	0.00	6.99	55.64	37.38	0.00	0.00
<b>Last Week</b> <i>03-08-2001</i>	0.00	6.99	91.49	1.52	0.00	0.00
<b>3 Months Ago</b> <i>12-14-2000</i>	92.29	6.21	1.50	0.00	0.00	0.00
<b>Start of Calendar Year</b> <i>01-04-2001</i>	95.69	2.12	1.77	0.42	0.00	0.00
<b>Start of Water Year</b> <i>09-28-2000</i>	61.47	14.83	16.39	6.55	0.76	0.00
<b>One Year Ago</b> <i>03-16-2000</i>	100.00	0.00	0.00	0.00	0.00	0.00

***Intensity:***

- None
- D0 Abnormally Dry
- D1 Moderate Drought
- D2 Severe Drought
- D3 Extreme Drought
- D4 Exceptional Drought

*The Drought Monitor focuses on broad-scale conditions. Local conditions may vary. For more information on the Drought Monitor, go to <https://droughtmonitor.unl.edu/About.aspx>*

***Author:***

Michael Hayes  
National Drought Mitigation Center

