

U.S. Drought Monitor

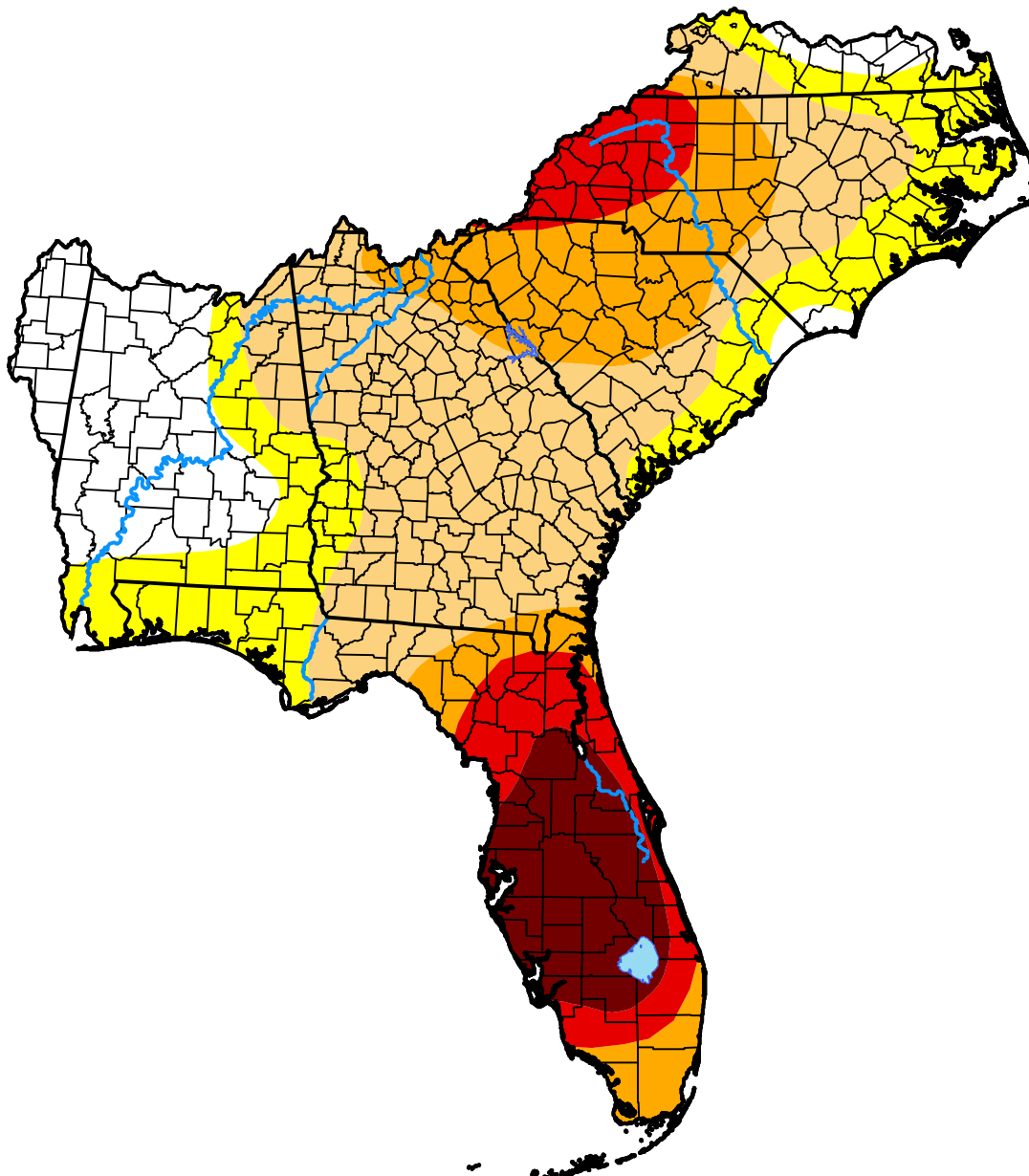
Southeast RFC

March 13, 2001
(Released Thursday, Mar. 15, 2001)

Valid 7 a.m. EST

Drought Conditions (Percent Area)

	None	D0-D4	D1-D4	D2-D4	D3-D4	D4
Current	14.78	85.22	65.90	33.50	17.49	8.58
Last Week <i>03-08-2001</i>	16.03	83.97	67.77	42.31	18.09	8.58
3 Months Ago <i>12-14-2000</i>	13.16	86.84	74.89	59.92	9.45	3.02
Start of Calendar Year <i>01-04-2001</i>	18.37	81.63	67.58	37.05	9.32	4.01
Start of Water Year <i>09-28-2000</i>	34.71	65.29	55.57	34.27	19.57	8.37
One Year Ago <i>03-16-2000</i>	17.77	82.23	57.08	24.75	0.00	0.00



Intensity:



The Drought Monitor focuses on broad-scale conditions. Local conditions may vary. For more information on the Drought Monitor, go to <https://droughtmonitor.unl.edu/About.aspx>

Author:

Michael Hayes
 National Drought Mitigation Center

