

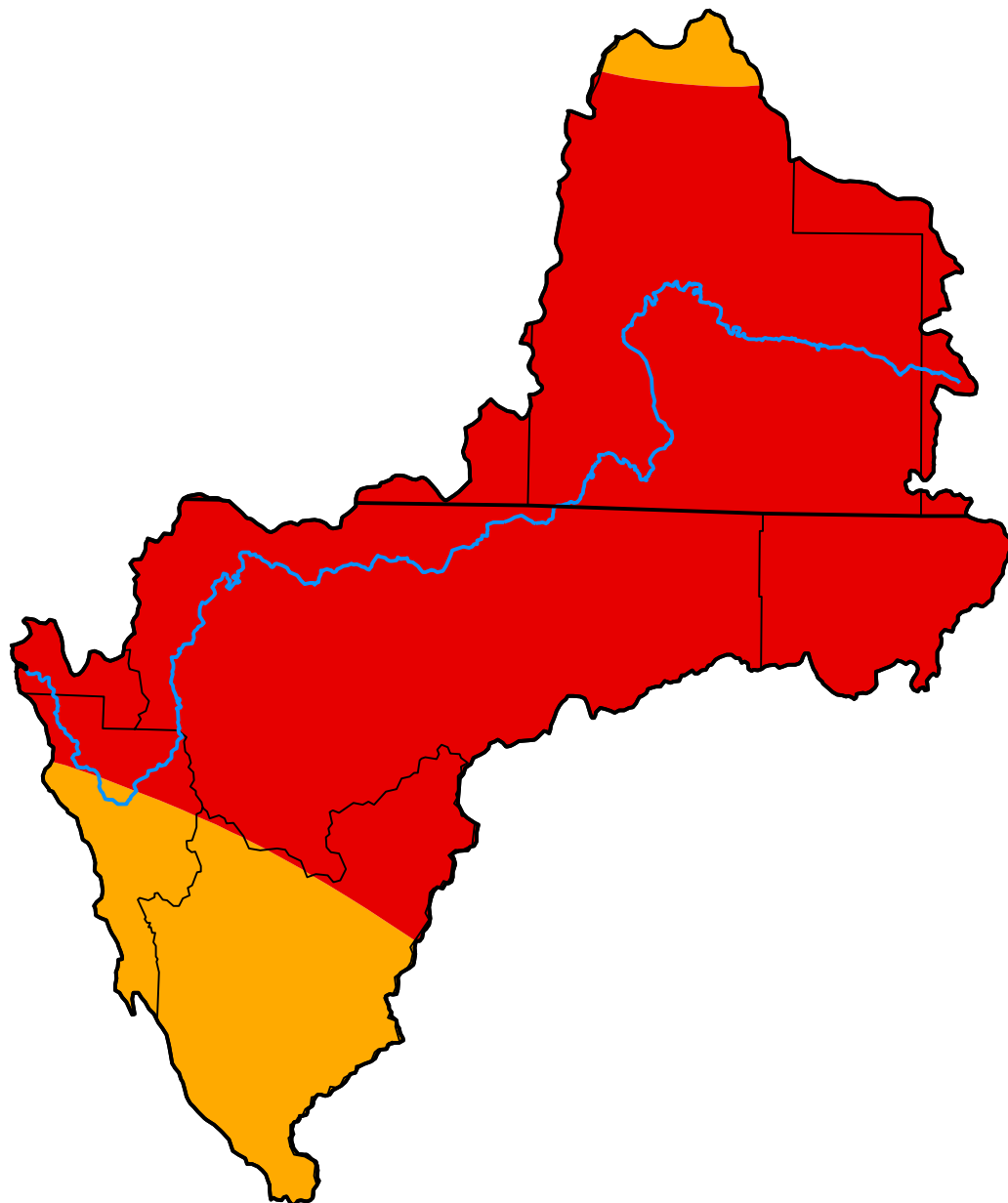
# U.S. Drought Monitor Klamath River Basin

**September 25, 2001**  
(Released Thursday, Sep. 27, 2001)

Valid 8 a.m. EDT

*Drought Conditions (Percent Area)*

	None	D0-D4	D1-D4	D2-D4	D3-D4	D4
<b>Current</b>	0.00	100.00	100.00	100.00	82.21	0.00
<b>Last Week</b> <i>09-18-2001</i>	0.00	100.00	100.00	100.00	82.21	0.00
<b>3 Months Ago</b> <i>06-26-2001</i>	0.00	100.00	100.00	94.05	39.87	0.00
<b>Start of Calendar Year</b> <i>01-02-2001</i>	100.00	0.00	0.00	0.00	0.00	0.00
<b>Start of Water Year</b> <i>09-26-2000</i>	100.00	0.00	0.00	0.00	0.00	0.00
<b>One Year Ago</b> <i>09-26-2000</i>	100.00	0.00	0.00	0.00	0.00	0.00



***Intensity:***



*The Drought Monitor focuses on broad-scale conditions. Local conditions may vary. For more information on the Drought Monitor, go to <https://droughtmonitor.unl.edu/About.aspx>*

***Author:***

Scott Stephens  
NOAA/NESDIS/NCEI



**droughtmonitor.unl.edu**