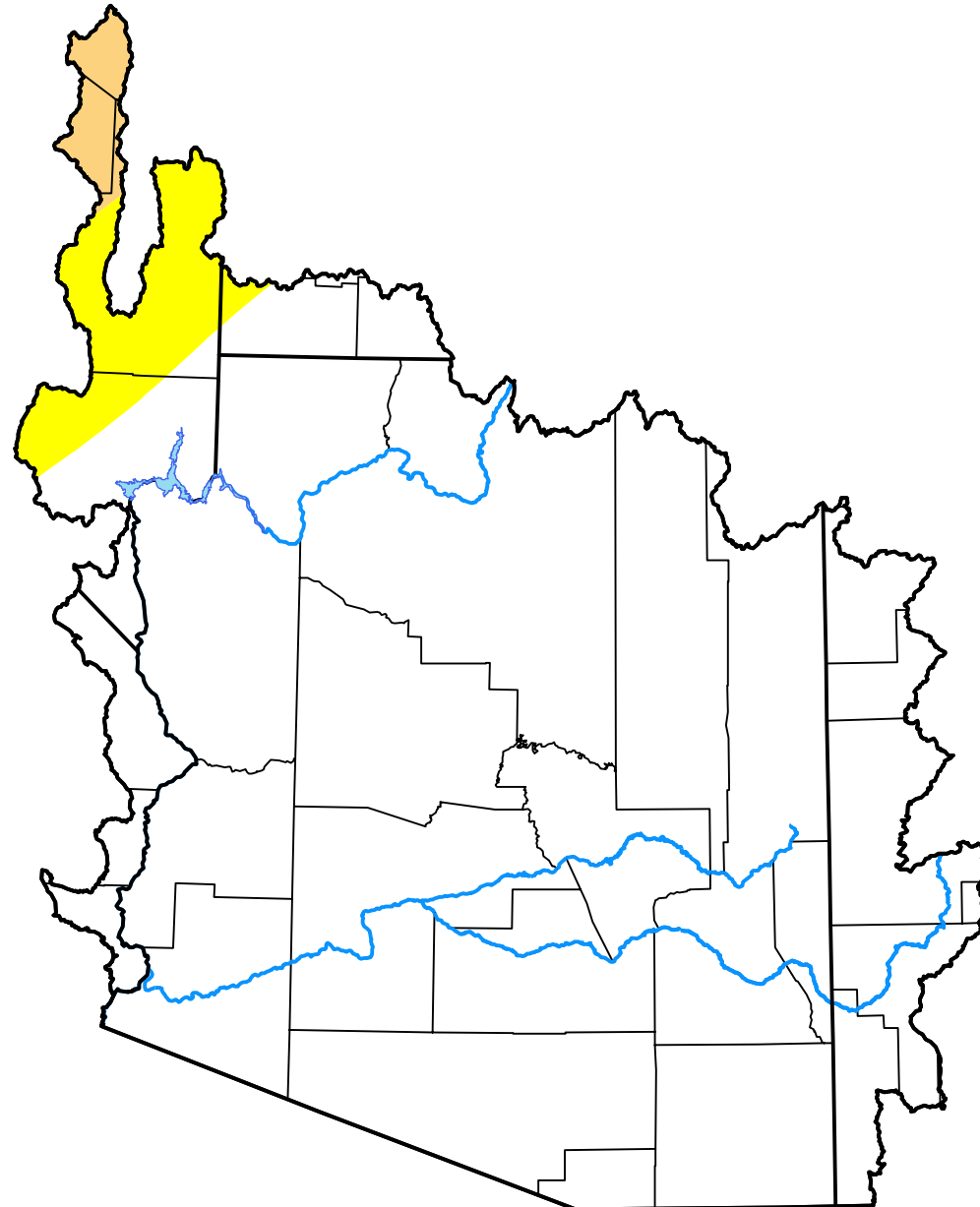


# U.S. Drought Monitor

## Lower Colorado Watershed

**October 16, 2001**  
 (Released Thursday, Oct. 18, 2001)  
 Valid 8 a.m. EDT



*Drought Conditions (Percent Area)*

	None	D0	D1	D2	D3	D4
<b>Current</b>	94.12	4.58	1.30	0.00	0.00	0.00
<b>Last Week</b> <i>10-11-2001</i>	94.48	4.21	1.30	0.00	0.00	0.00
<b>3 Months Ago</b> <i>07-19-2001</i>	97.95	1.71	0.35	0.00	0.00	0.00
<b>Start of Calendar Year</b> <i>01-04-2001</i>	100.00	0.00	0.00	0.00	0.00	0.00
<b>Start of Water Year</b> <i>09-27-2001</i>	94.48	4.21	1.30	0.00	0.00	0.00
<b>One Year Ago</b> <i>10-19-2000</i>	36.53	48.74	14.40	0.33	0.00	0.00

*Intensity:*

- None
- D0 Abnormally Dry
- D1 Moderate Drought
- D2 Severe Drought
- D3 Extreme Drought
- D4 Exceptional Drought

*The Drought Monitor focuses on broad-scale conditions. Local conditions may vary. For more information on the Drought Monitor, go to <https://droughtmonitor.unl.edu/About.aspx>*

*Author:*

Douglas Le Comte  
 CPC/NOAA

