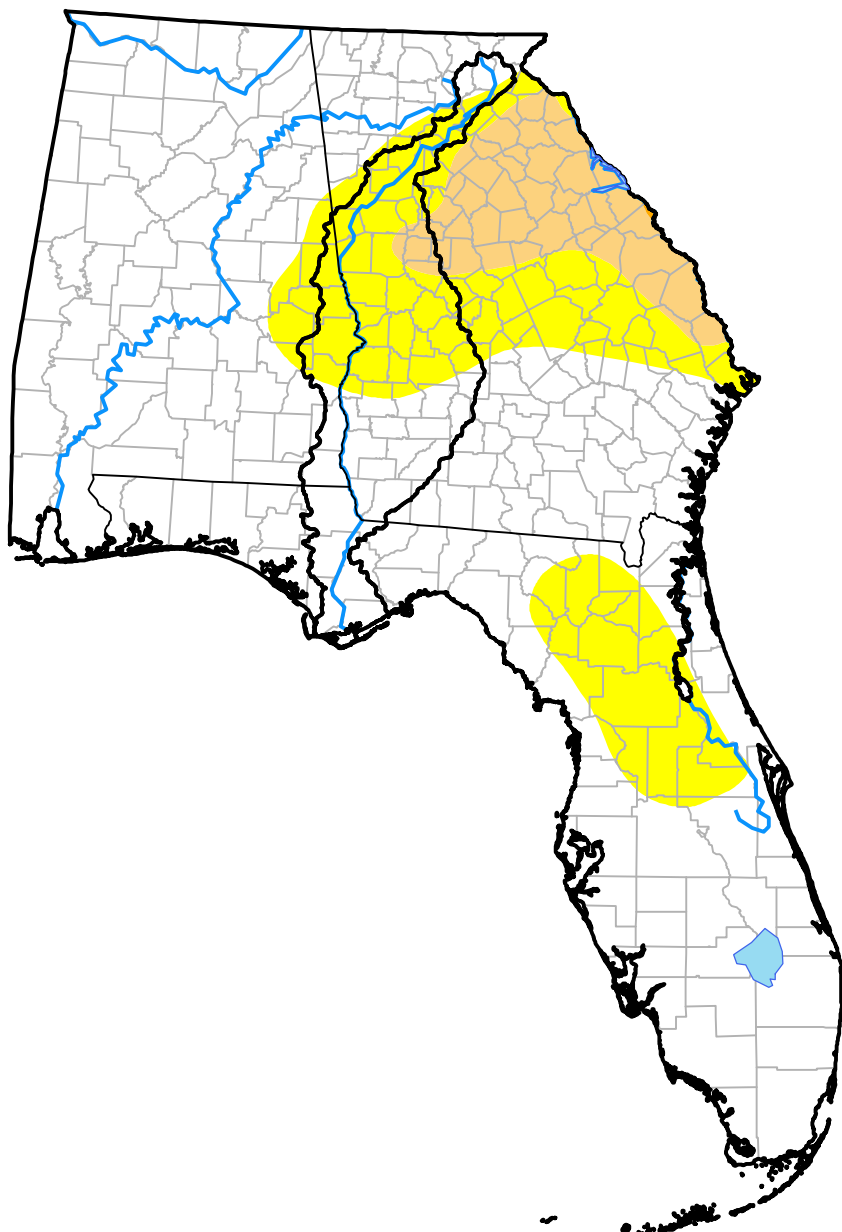


# Upper Basin RDEWS and Surrounding Areas

(Released Thursday, Oct. 18, 2001)

10:08 a.m. EDT



Drought Conditions (Percent Area)

	None	D0-D4	D1-D4	D2-D4	D3-D4	D4
<b>Current</b>	73.43	26.57	7.36	0.02	0.00	0.00
<b>Last Week</b> <i>10-11-2001</i>	75.45	24.55	6.07	0.00	0.00	0.00
<b>3 Months Ago</b> <i>07-19-2001</i>	59.58	40.42	23.93	16.58	2.89	0.00
<b>Start of Calendar Year</b> <i>01-04-2001</i>	2.67	97.33	89.57	50.14	13.83	5.97
<b>Start of Water Year</b> <i>09-27-2001</i>	80.38	19.62	0.00	0.00	0.00	0.00
<b>One Year Ago</b> <i>10-19-2000</i>	7.83	92.17	81.39	58.25	36.10	15.33

Intensity:

- None
- D0 Abnormally Dry
- D1 Moderate Drought
- D2 Severe Drought
- D3 Extreme Drought
- D4 Exceptional Drought

The Drought Monitor focuses on broad-scale conditions. Local conditions may vary. For more information on the Drought Monitor, go to <https://droughtmonitor.unl.edu/About.aspx>

Author:

Douglas Le Comte  
CPC/NOAA

