

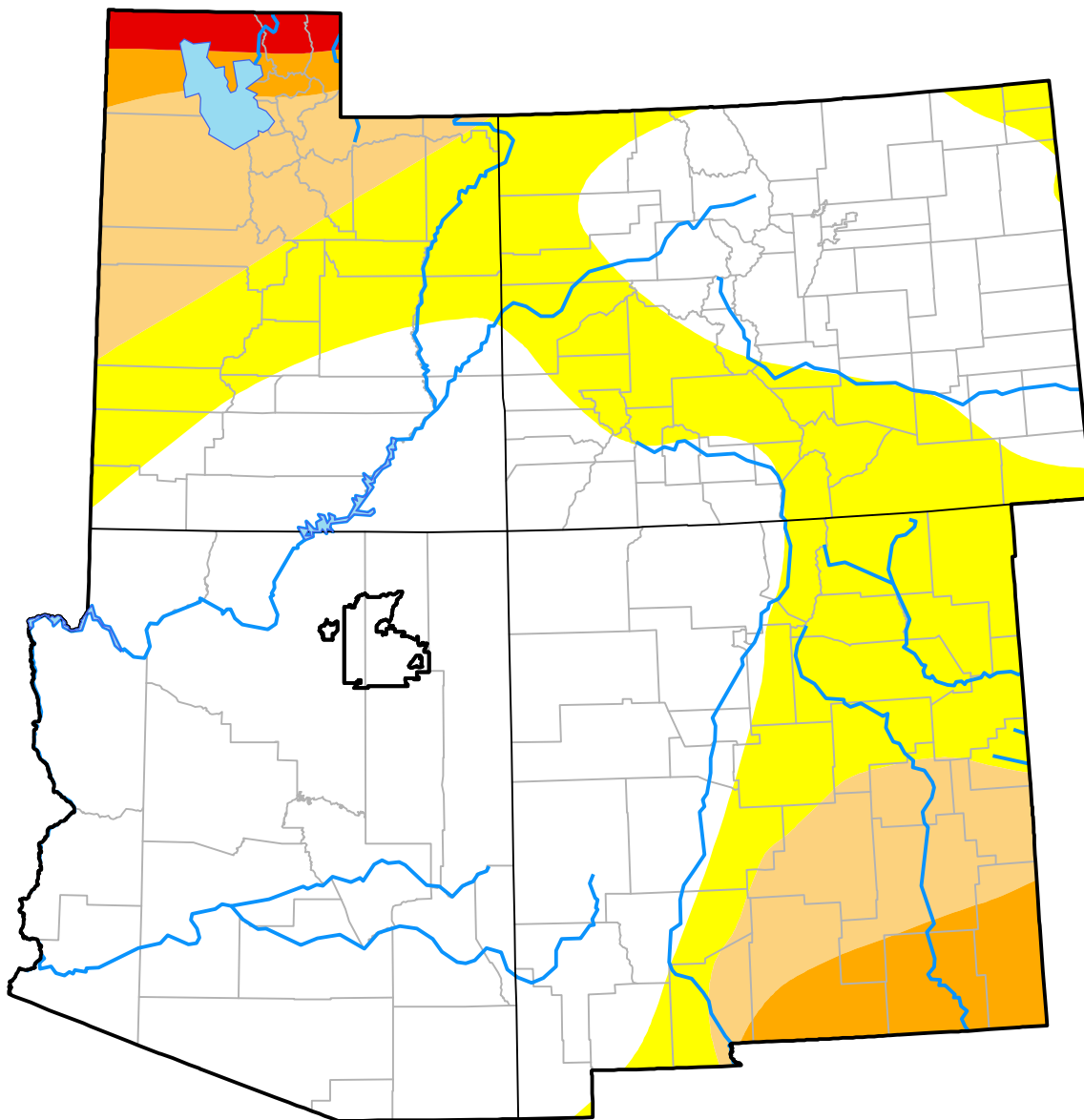
# Opportunity RDEWS and Surrounding Areas

(Released Thursday, Oct. 18, 2001)

Valid 8 a.m. EDT

Drought Conditions (Percent Area)

	None	D0	D1	D2	D3	D4
<b>Current</b>	61.35	23.31	10.36	4.02	0.95	0.00
<b>Last Week</b> <i>10-11-2001</i>	60.84	23.82	11.00	3.38	0.95	0.00
<b>3 Months Ago</b> <i>07-19-2001</i>	79.59	12.49	4.85	3.07	0.00	0.00
<b>Start of Calendar Year</b> <i>01-04-2001</i>	88.15	10.08	1.76	0.00	0.00	0.00
<b>Start of Water Year</b> <i>09-27-2001</i>	60.78	23.89	11.00	3.24	1.09	0.00
<b>One Year Ago</b> <i>10-19-2000</i>	24.10	44.85	21.78	9.15	0.11	0.00



**Intensity:**

- None
- D0 Abnormally Dry
- D1 Moderate Drought
- D2 Severe Drought
- D3 Extreme Drought
- D4 Exceptional Drought

The Drought Monitor focuses on broad-scale conditions. Local conditions may vary. For more information on the Drought Monitor, go to <https://droughtmonitor.unl.edu/About.aspx>

**Author:**

Douglas Le Comte  
CPC/NOAA

