

# U.S. Drought Monitor

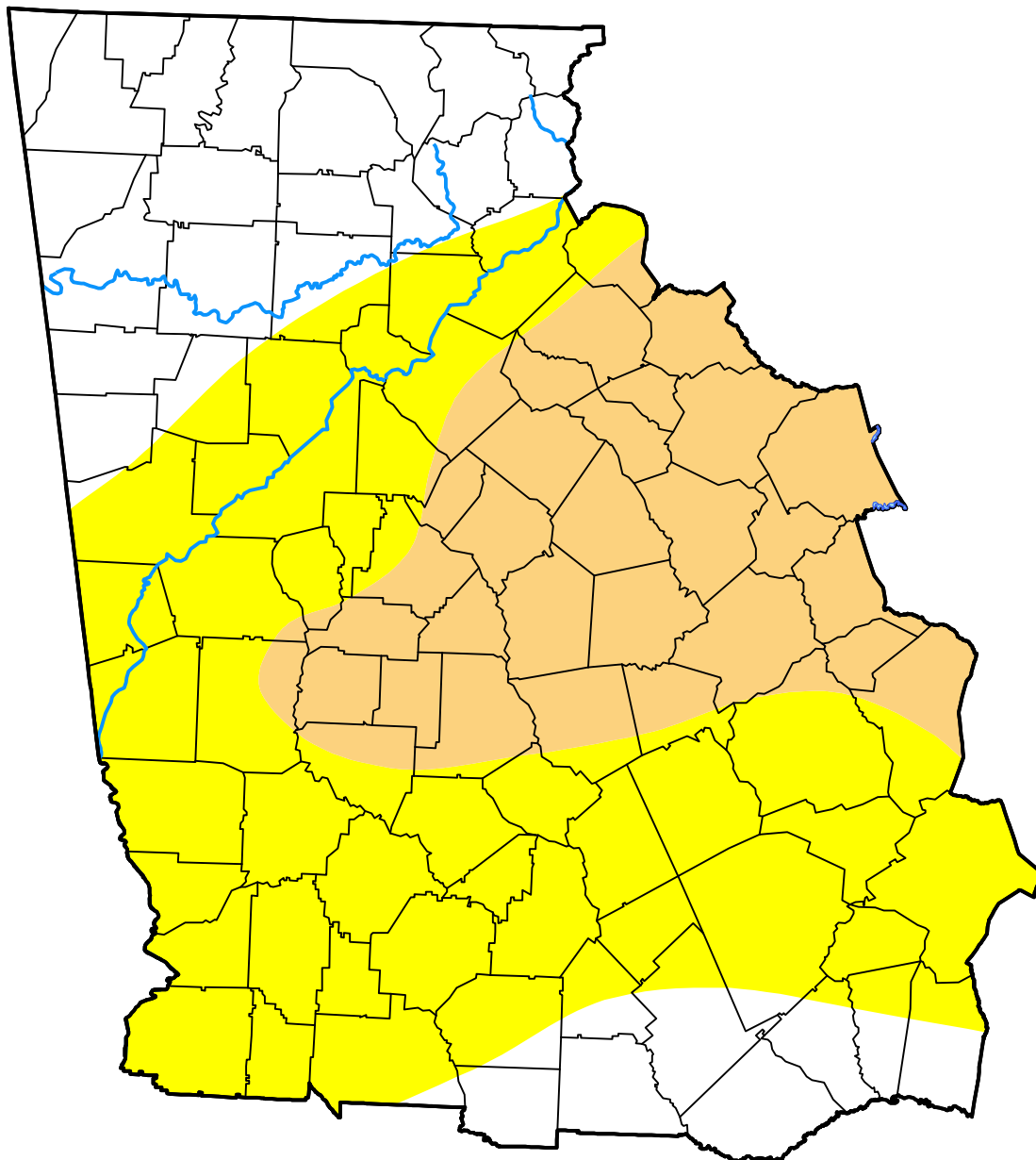
## Peachtree City, GA WFO

**October 16, 2001**  
*(Released Thursday, Oct. 18, 2001)*

Valid 8 a.m. EDT

*Drought Conditions (Percent Area)*

	None	D0-D4	D1-D4	D2-D4	D3-D4	D4
<b>Current</b>	27.66	72.34	25.19	0.00	0.00	0.00
<b>Last Week</b> <i>10-11-2001</i>	31.20	68.80	18.57	0.00	0.00	0.00
<b>3 Months Ago</b> <i>07-19-2001</i>	63.03	36.97	0.10	0.00	0.00	0.00
<b>Start of Calendar Year</b> <i>01-04-2001</i>	0.00	100.00	100.00	73.48	0.00	0.00
<b>Start of Water Year</b> <i>09-27-2001</i>	47.58	52.42	0.00	0.00	0.00	0.00
<b>One Year Ago</b> <i>10-19-2000</i>	0.00	100.00	99.72	76.16	30.66	0.00



***Intensity:***

- None
- D0 Abnormally Dry
- D1 Moderate Drought
- D2 Severe Drought
- D3 Extreme Drought
- D4 Exceptional Drought

*The Drought Monitor focuses on broad-scale conditions. Local conditions may vary. For more information on the Drought Monitor, go to <https://droughtmonitor.unl.edu/About.aspx>*

***Author:***

Douglas Le Comte  
 CPC/NOAA

