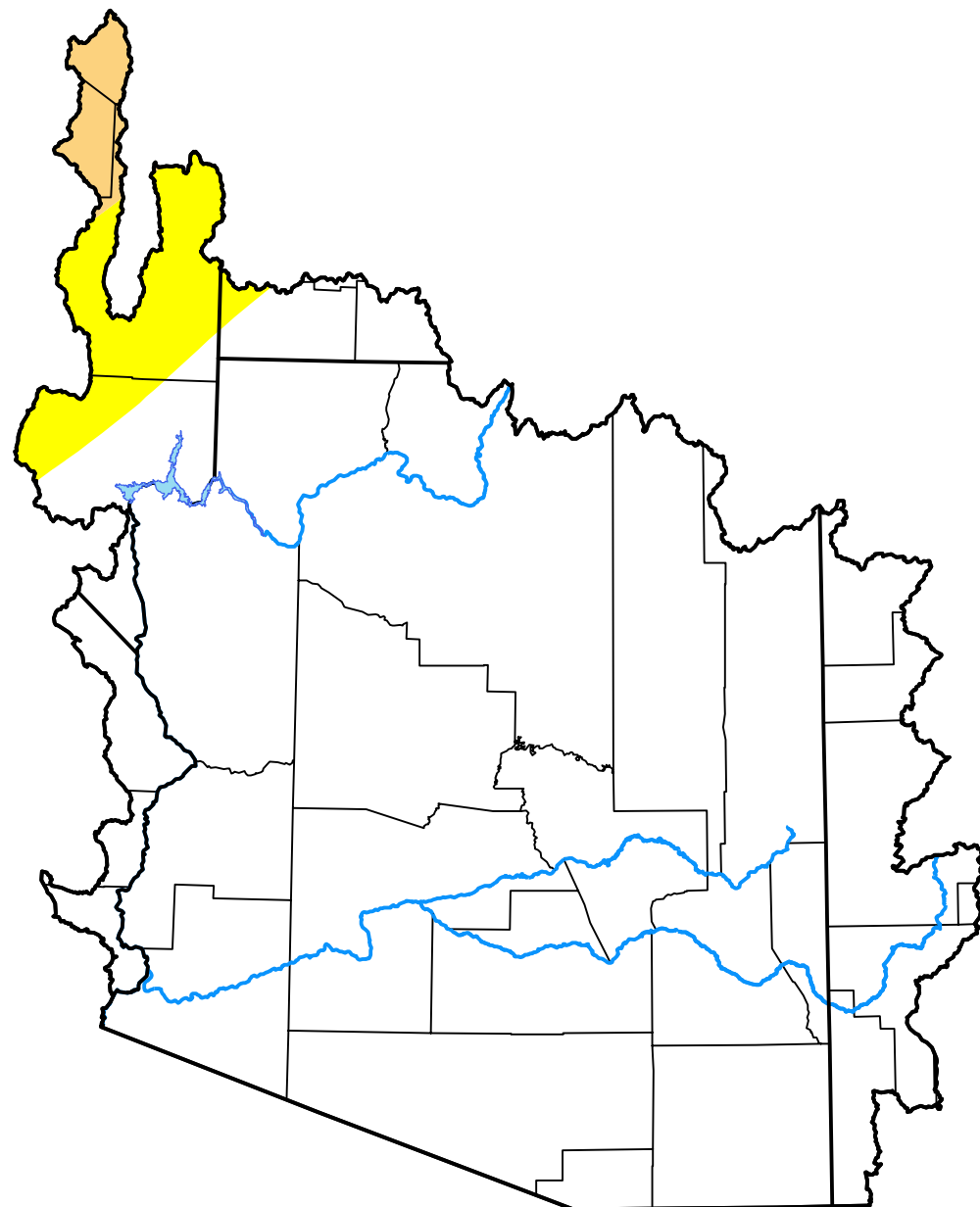


U.S. Drought Monitor

Lower Colorado Watershed

October 23, 2001
(Released Thursday, Oct. 25, 2001)

Valid 8 a.m. EDT



Drought Conditions (Percent Area)

	None	D0-D4	D1-D4	D2-D4	D3-D4	D4
Current	94.12	5.88	1.30	0.00	0.00	0.00
Last Week <i>10-18-2001</i>	94.12	5.88	1.30	0.00	0.00	0.00
3 Months Ago <i>07-26-2001</i>	97.76	2.24	0.35	0.00	0.00	0.00
Start of Calendar Year <i>01-04-2001</i>	100.00	0.00	0.00	0.00	0.00	0.00
Start of Water Year <i>09-27-2001</i>	94.48	5.52	1.30	0.00	0.00	0.00
One Year Ago <i>10-26-2000</i>	55.36	44.64	2.70	0.00	0.00	0.00

Intensity:

- None
- D0 Abnormally Dry
- D1 Moderate Drought
- D2 Severe Drought
- D3 Extreme Drought
- D4 Exceptional Drought

The Drought Monitor focuses on broad-scale conditions. Local conditions may vary. For more information on the Drought Monitor, go to <https://droughtmonitor.unl.edu/About.aspx>

Author:

Mark Svoboda
 National Drought Mitigation Center



droughtmonitor.unl.edu