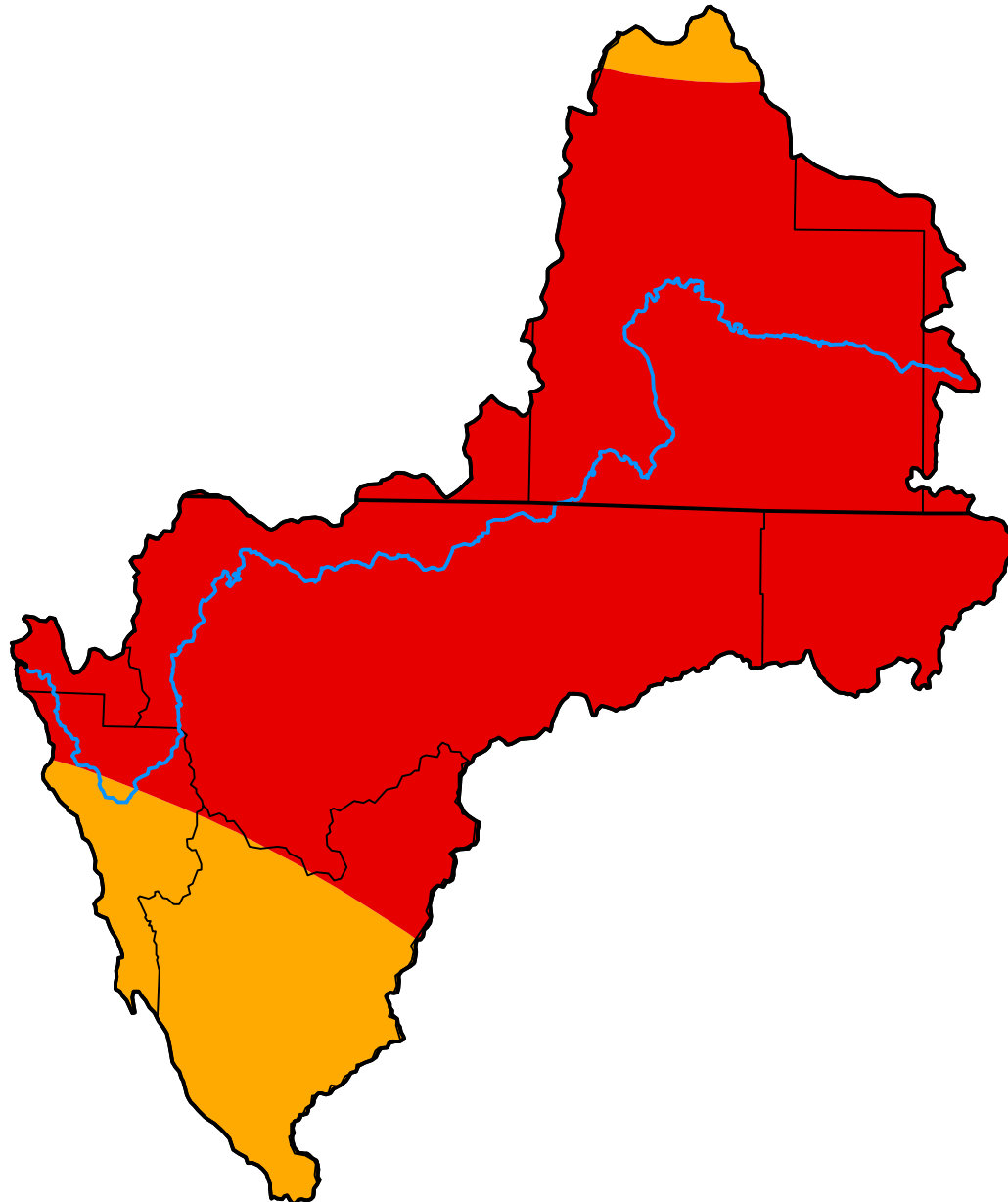


# U.S. Drought Monitor

## Klamath River Basin

**October 23, 2001**  
 (Released Thursday, Oct. 25, 2001)  
 Valid 8 a.m. EDT



*Drought Conditions (Percent Area)*

	None	D0	D1	D2	D3	D4
<b>Current</b>	0.00	0.00	0.00	17.79	82.21	0.00
<b>Last Week</b> <i>10-16-2001</i>	0.00	0.00	0.00	17.79	82.21	0.00
<b>3 Months Ago</b> <i>07-24-2001</i>	0.00	0.00	5.57	34.23	60.20	0.00
<b>Start of Calendar Year</b> <i>01-02-2001</i>	100.00	0.00	0.00	0.00	0.00	0.00
<b>Start of Water Year</b> <i>09-25-2001</i>	0.00	0.00	0.00	17.79	82.21	0.00
<b>One Year Ago</b> <i>10-24-2000</i>	100.00	0.00	0.00	0.00	0.00	0.00

***Intensity:***



*The Drought Monitor focuses on broad-scale conditions. Local conditions may vary. For more information on the Drought Monitor, go to <https://droughtmonitor.unl.edu/About.aspx>*

***Author:***

Mark Svoboda  
 National Drought Mitigation Center

