

U.S. Drought Monitor

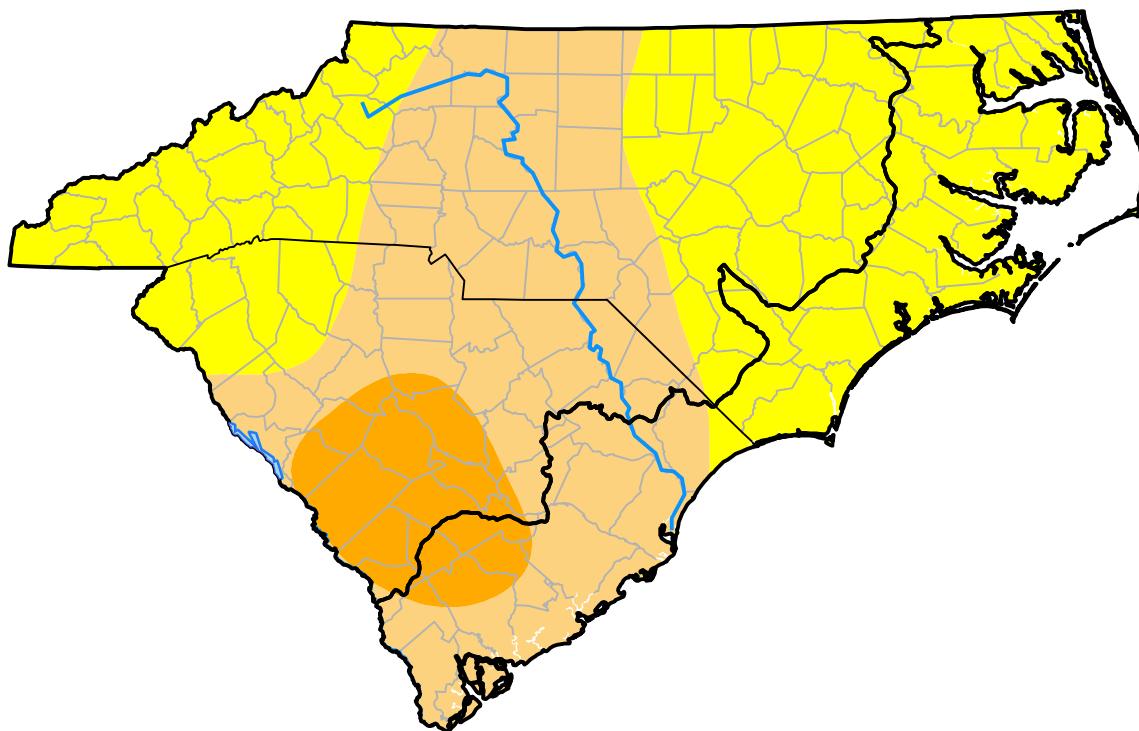
Coastal Carolinas RDEWS

October 23, 2001
(Released Thursday, Oct. 25, 2001)

Valid 8 a.m. EDT

Drought Conditions (Percent Area)

	None	D0	D1	D2	D3	D4
Current	0.00	59.08	35.54	5.38	0.00	0.00
Last Week <i>10-18-2001</i>	54.61	32.26	13.13	0.00	0.00	0.00
3 Months Ago <i>07-26-2001</i>	37.31	52.49	10.21	0.00	0.00	0.00
Start of Calendar Year <i>01-04-2001</i>	97.18	2.82	0.00	0.00	0.00	0.00
Start of Water Year <i>09-27-2001</i>	86.90	13.10	0.00	0.00	0.00	0.00
One Year Ago <i>10-26-2000</i>	72.36	16.98	10.66	0.00	0.00	0.00



Intensity:

- None
- D0 Abnormally Dry
- D1 Moderate Drought
- D2 Severe Drought
- D3 Extreme Drought
- D4 Exceptional Drought

The Drought Monitor focuses on broad-scale conditions. Local conditions may vary. For more information on the Drought Monitor, go to <https://droughtmonitor.unl.edu/About.aspx>

Author:

Mark Svoboda
 National Drought Mitigation Center



droughtmonitor.unl.edu