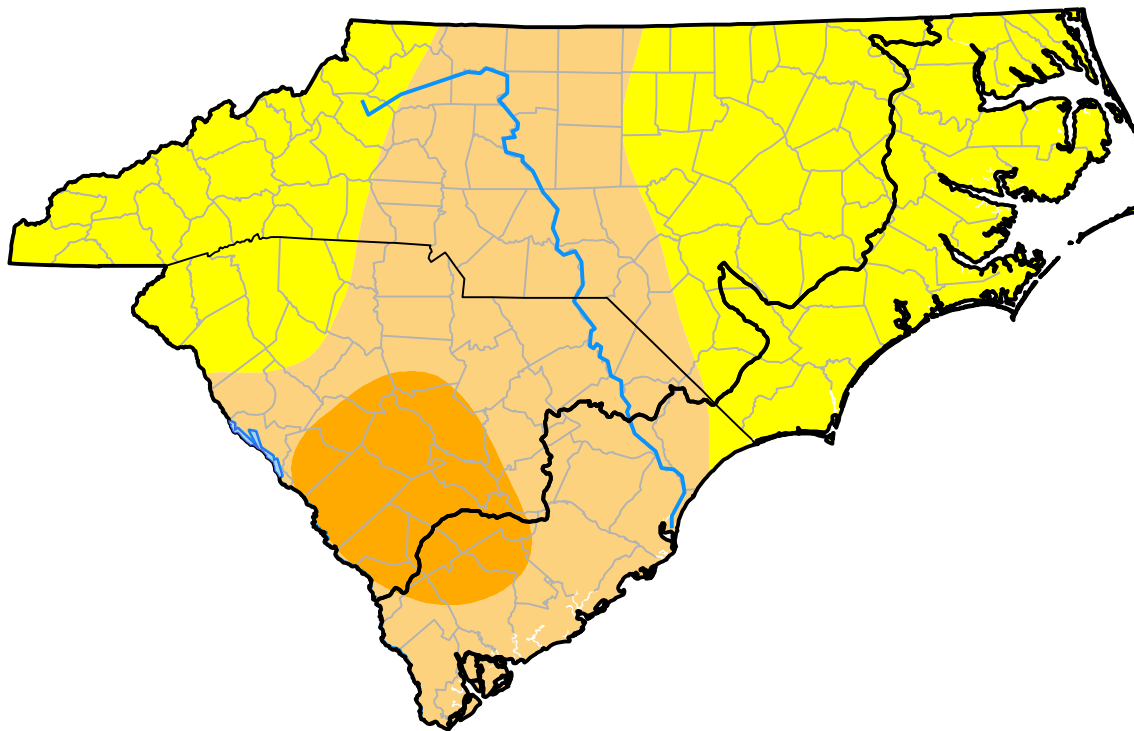


# Carolinas RDEWS and Surrounding Areas

Drought Conditions (Percent Area)

	None	D0	D1	D2	D3	D4
<b>Current</b>	0.00	50.70	39.74	9.57	0.00	0.00
<b>Last Week</b> <i>10-18-2001</i>	38.37	32.50	25.15	3.98	0.00	0.00
<b>3 Months Ago</b> <i>07-26-2001</i>	33.97	47.52	11.18	4.63	2.71	0.00
<b>Start of Calendar Year</b> <i>01-04-2001</i>	41.22	18.31	16.39	22.33	1.76	0.00
<b>Start of Water Year</b> <i>09-27-2001</i>	54.56	39.16	6.28	0.00	0.00	0.00
<b>One Year Ago</b> <i>10-26-2000</i>	34.70	17.71	12.00	27.98	7.61	0.00



Intensity:

- None
- D0 Abnormally Dry
- D1 Moderate Drought
- D2 Severe Drought
- D3 Extreme Drought
- D4 Exceptional Drought

The Drought Monitor focuses on broad-scale conditions. Local conditions may vary. For more information on the Drought Monitor, go to <https://droughtmonitor.unl.edu/About.aspx>

Author:

Mark Svoboda  
National Drought Mitigation Center

