

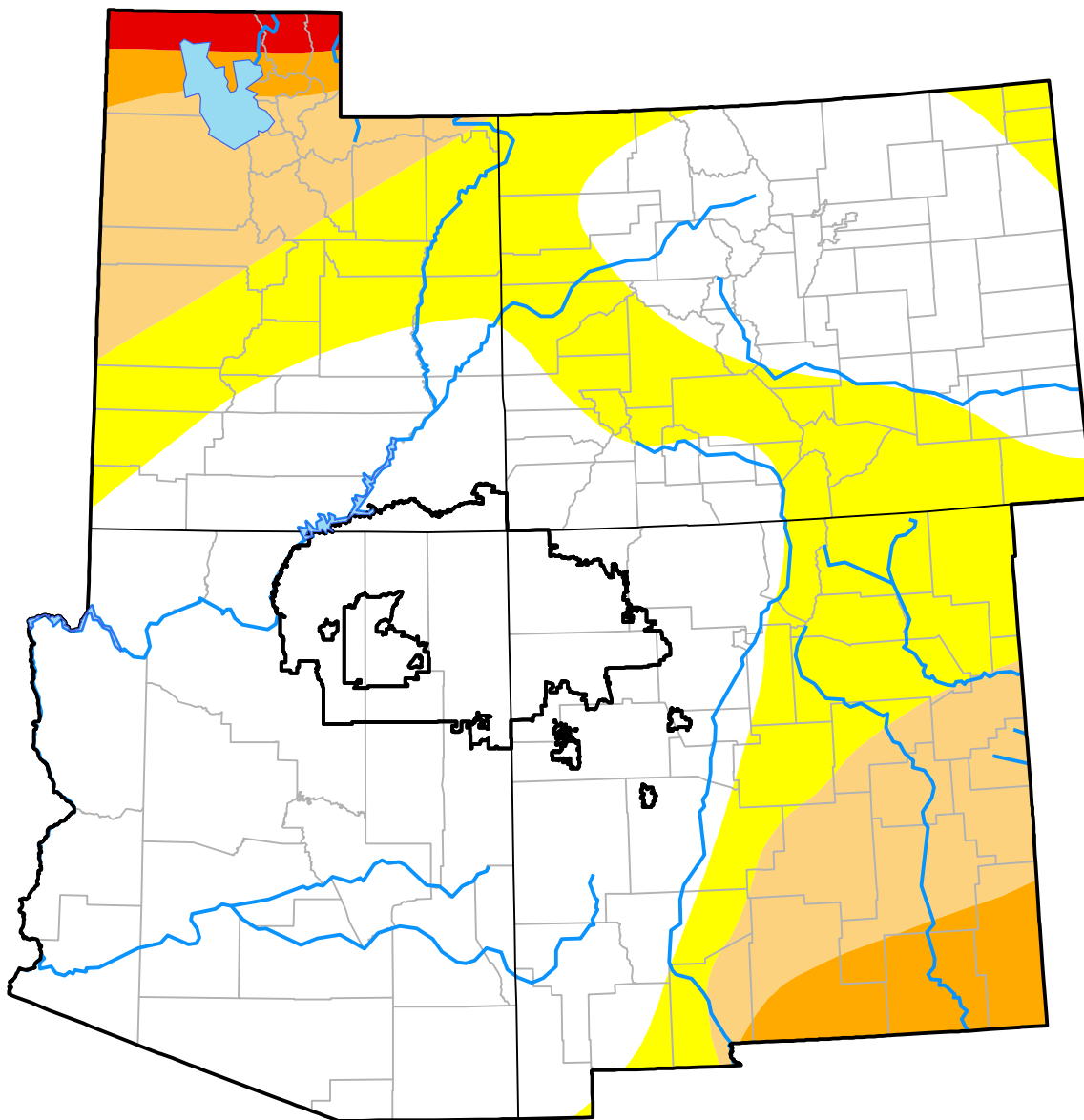
Nebraska RDEWS and Surrounding Areas

(Released Thursday, Oct. 25, 2001)

Valid 8 a.m. EDT

Drought Conditions (Percent Area)

	None	D0-D4	D1-D4	D2-D4	D3-D4	D4
Current	61.23	38.77	16.66	4.97	0.95	0.00
Last Week <i>10-18-2001</i>	61.35	38.65	15.34	4.97	0.95	0.00
3 Months Ago <i>07-26-2001</i>	78.28	21.72	8.58	3.21	0.00	0.00
Start of Calendar Year <i>01-04-2001</i>	88.15	11.85	1.76	0.00	0.00	0.00
Start of Water Year <i>09-27-2001</i>	60.78	39.22	15.34	4.33	1.09	0.00
One Year Ago <i>10-26-2000</i>	25.58	74.42	30.40	3.99	0.00	0.00



Intensity:

- None
- D0 Abnormally Dry
- D1 Moderate Drought
- D2 Severe Drought
- D3 Extreme Drought
- D4 Exceptional Drought

The Drought Monitor focuses on broad-scale conditions. Local conditions may vary. For more information on the Drought Monitor, go to <https://droughtmonitor.unl.edu/About.aspx>

Author:

Mark Svoboda
National Drought Mitigation Center

