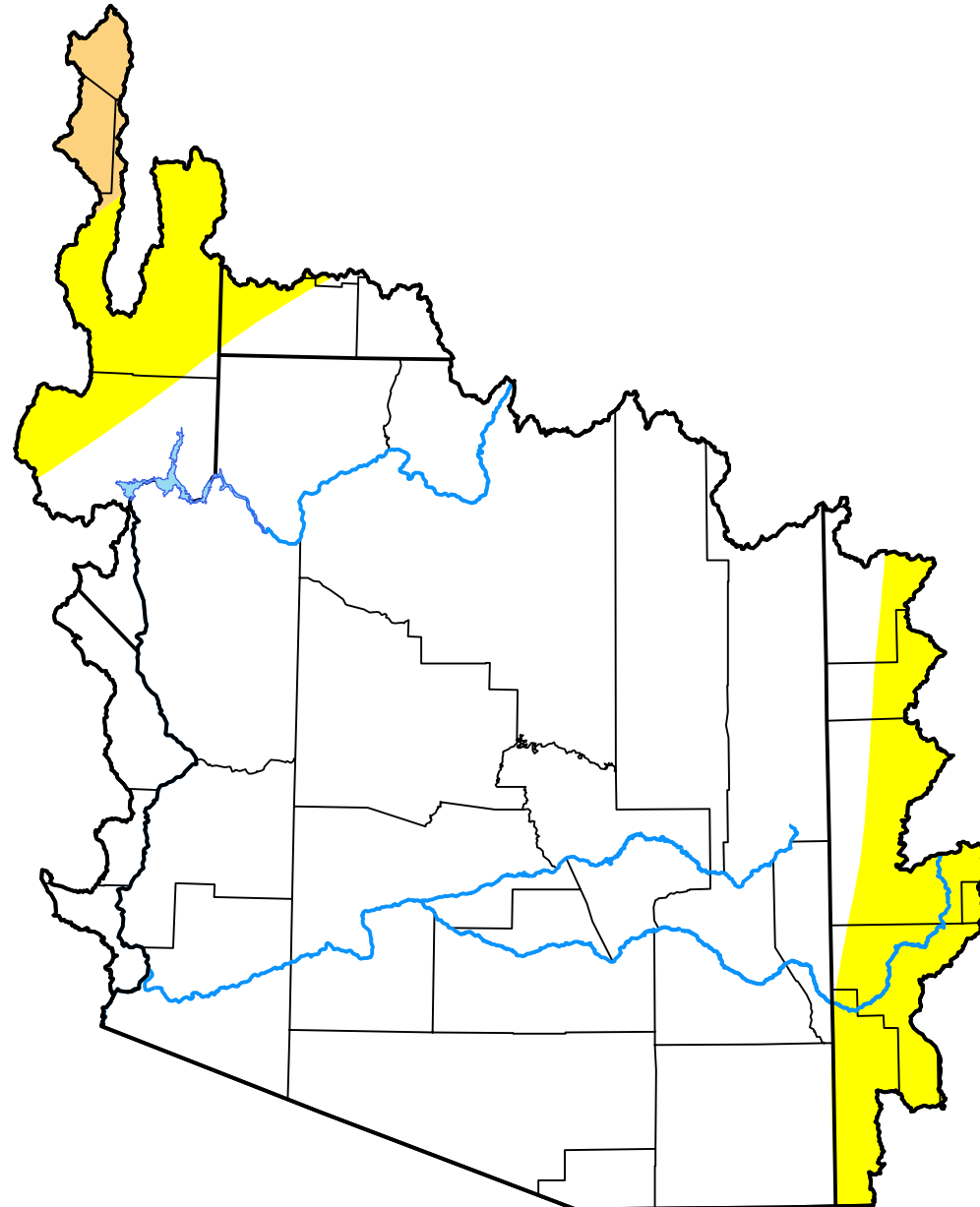


# U.S. Drought Monitor

## Lower Colorado Watershed

**November 6, 2001**  
 (Released Thursday, Nov. 8, 2001)  
 Valid 7 a.m. EST



*Drought Conditions (Percent Area)*

	None	D0	D1	D2	D3	D4
<b>Current</b>	86.57	12.12	1.30	0.00	0.00	0.00
<b>Last Week</b> <i>11-01-2001</i>	93.31	5.38	1.30	0.00	0.00	0.00
<b>3 Months Ago</b> <i>08-09-2001</i>	97.76	1.90	0.35	0.00	0.00	0.00
<b>Start of Calendar Year</b> <i>01-04-2001</i>	100.00	0.00	0.00	0.00	0.00	0.00
<b>Start of Water Year</b> <i>09-27-2001</i>	94.48	4.21	1.30	0.00	0.00	0.00
<b>One Year Ago</b> <i>11-09-2000</i>	99.80	0.20	0.00	0.00	0.00	0.00

***Intensity:***

- None
- D0 Abnormally Dry
- D1 Moderate Drought
- D2 Severe Drought
- D3 Extreme Drought
- D4 Exceptional Drought

*The Drought Monitor focuses on broad-scale conditions. Local conditions may vary. For more information on the Drought Monitor, go to <https://droughtmonitor.unl.edu/About.aspx>*

***Author:***

Michael Hayes  
 National Drought Mitigation Center

