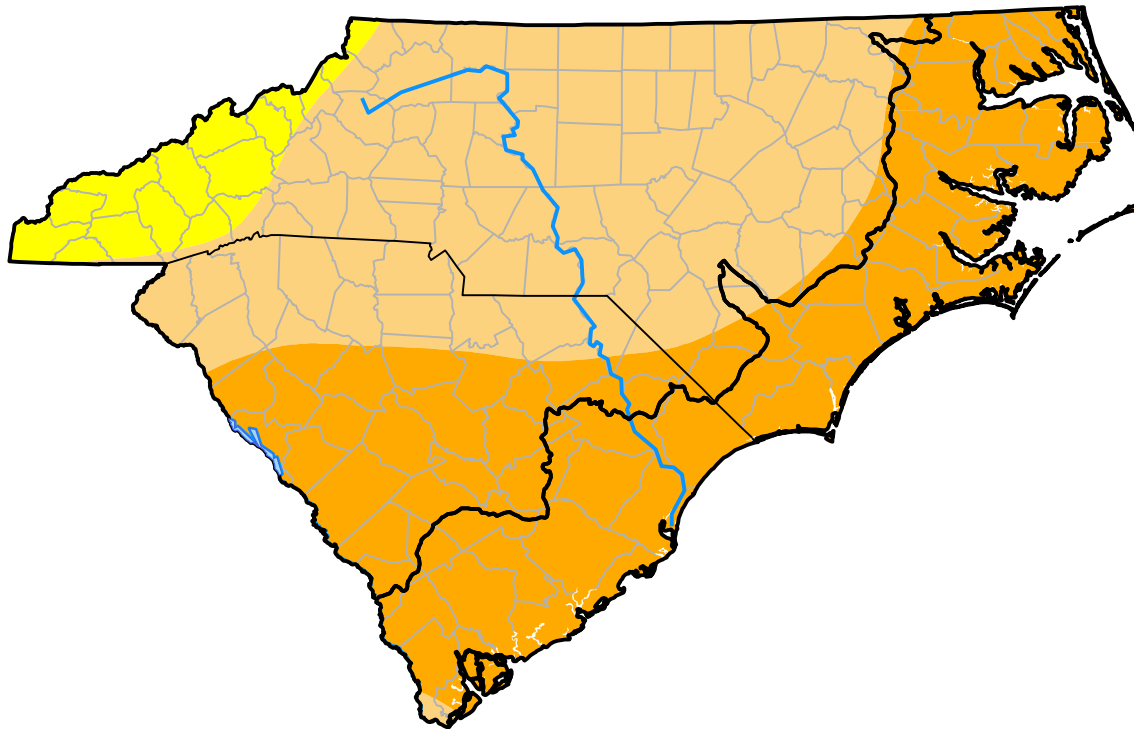


Carolinas RDEWS and Surrounding Areas

Drought Conditions (Percent Area)

	None	D0	D1	D2	D3	D4
Current	0.00	6.78	47.73	45.50	0.00	0.00
Last Week <i>11-01-2001</i>	0.00	10.36	62.38	27.27	0.00	0.00
3 Months Ago <i>08-09-2001</i>	38.39	40.37	16.22	5.01	0.00	0.00
Start of Calendar Year <i>01-04-2001</i>	41.22	18.31	16.39	22.33	1.76	0.00
Start of Water Year <i>09-27-2001</i>	54.56	39.16	6.28	0.00	0.00	0.00
One Year Ago <i>11-09-2000</i>	11.21	21.78	17.83	14.95	32.60	1.64



Intensity:

- None
- D0 Abnormally Dry
- D1 Moderate Drought
- D2 Severe Drought
- D3 Extreme Drought
- D4 Exceptional Drought

The Drought Monitor focuses on broad-scale conditions. Local conditions may vary. For more information on the Drought Monitor, go to <https://droughtmonitor.unl.edu/About.aspx>

Author:

Michael Hayes
National Drought Mitigation Center

