

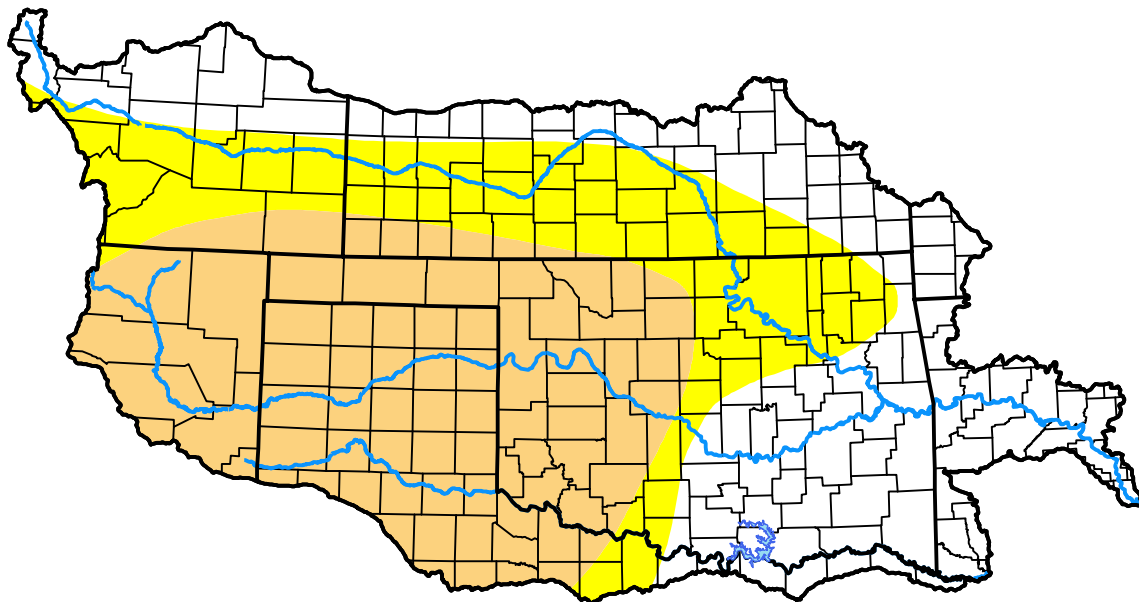
U.S. Drought Monitor

Arkansas Red Basin RFC

November 6, 2001
 (Released Thursday, Nov. 8, 2001)
 Valid 7 a.m. EST

Drought Conditions (Percent Area)

	None	D0-D4	D1-D4	D2-D4	D3-D4	D4
Current	35.22	64.78	40.43	0.00	0.00	0.00
Last Week <i>11-01-2001</i>	40.90	59.10	42.08	0.00	0.00	0.00
3 Months Ago <i>08-09-2001</i>	30.61	69.39	44.05	19.15	0.00	0.00
Start of Calendar Year <i>01-04-2001</i>	95.39	4.61	0.10	0.00	0.00	0.00
Start of Water Year <i>09-27-2001</i>	51.06	48.94	7.74	0.00	0.00	0.00
One Year Ago <i>11-09-2000</i>	84.39	15.61	0.90	0.00	0.00	0.00



Intensity:



The Drought Monitor focuses on broad-scale conditions. Local conditions may vary. For more information on the Drought Monitor, go to <https://droughtmonitor.unl.edu/About.aspx>

Author:

Michael Hayes
 National Drought Mitigation Center



droughtmonitor.unl.edu