

U.S. Drought Monitor

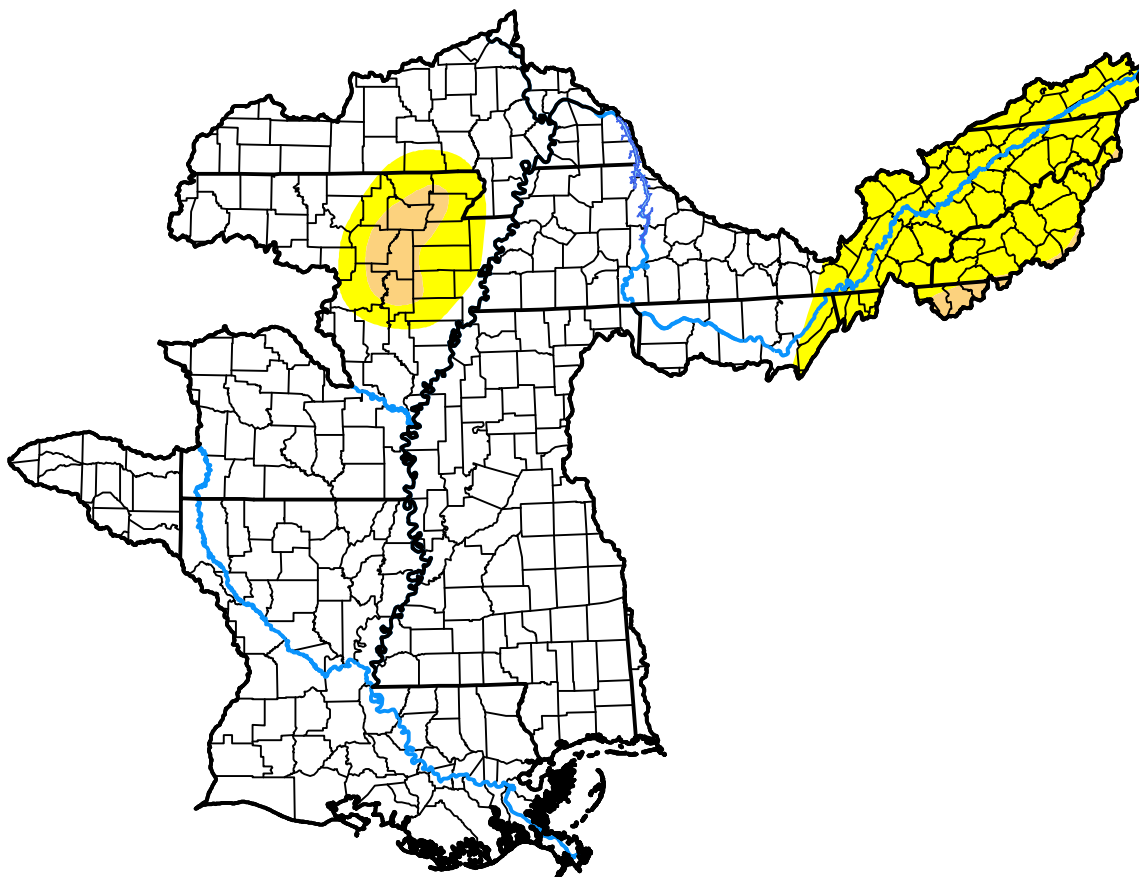
Lower Mississippi RFC

November 6, 2001
 (Released Thursday, Nov. 8, 2001)

Valid 7 a.m. EST

Drought Conditions (Percent Area)

	None	D0	D1	D2	D3	D4
Current	82.88	14.95	2.17	0.00	0.00	0.00
Last Week <i>11-01-2001</i>	83.13	15.21	1.66	0.00	0.00	0.00
3 Months Ago <i>08-09-2001</i>	50.81	30.97	15.40	2.82	0.00	0.00
Start of Calendar Year <i>01-04-2001</i>	43.65	21.23	18.06	15.62	1.45	0.00
Start of Water Year <i>09-27-2001</i>	86.57	7.69	3.80	1.94	0.00	0.00
One Year Ago <i>11-09-2000</i>	7.40	17.32	7.61	17.49	41.06	9.13



Intensity:

- None
- D0 Abnormally Dry
- D1 Moderate Drought
- D2 Severe Drought
- D3 Extreme Drought
- D4 Exceptional Drought

The Drought Monitor focuses on broad-scale conditions. Local conditions may vary. For more information on the Drought Monitor, go to <https://droughtmonitor.unl.edu/About.aspx>

Author:

Michael Hayes
 National Drought Mitigation Center



droughtmonitor.unl.edu