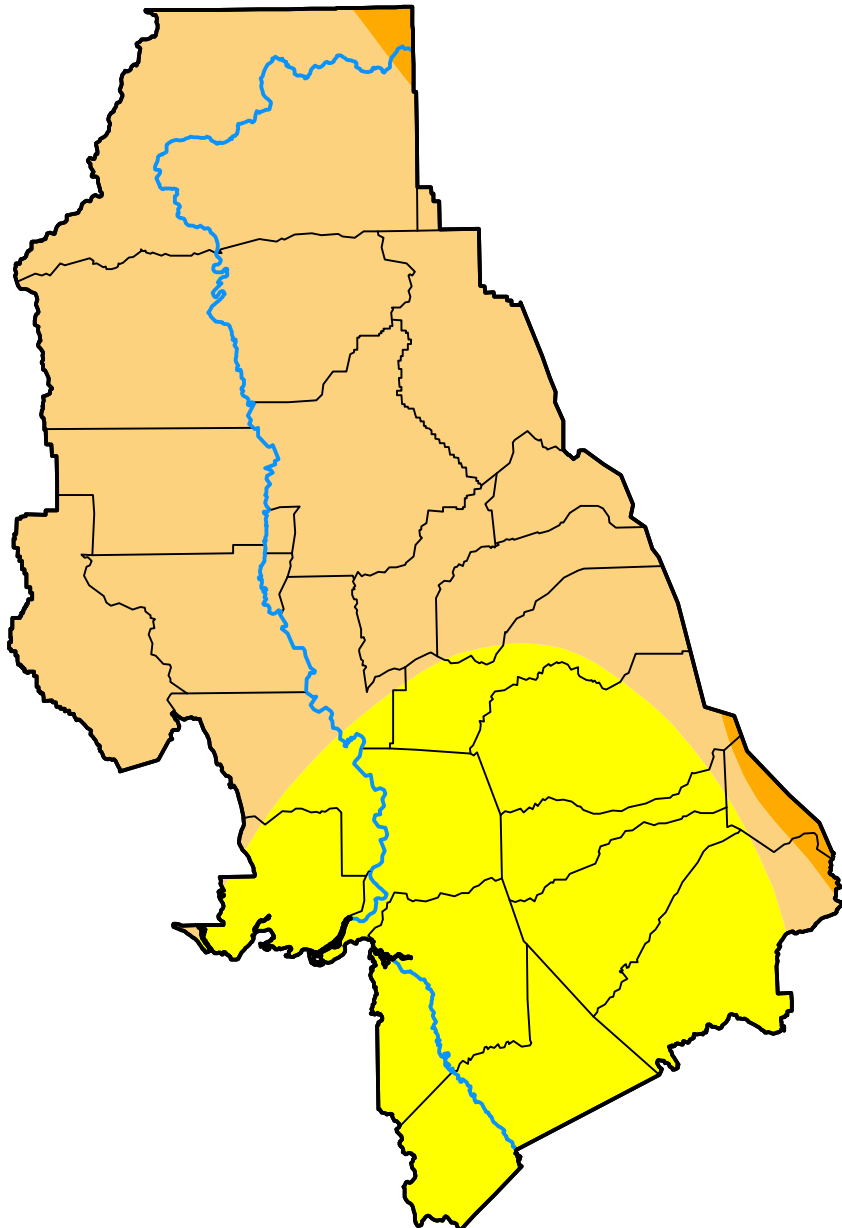


U.S. Drought Monitor

Sacramento, CA WFO

November 5, 2002
 (Released Thursday, Nov. 7, 2002)
 Valid 7 a.m. EST



Drought Conditions (Percent Area)

	None	D0-D4	D1-D4	D2-D4	D3-D4	D4
Current	0.00	100.00	64.86	1.27	0.00	0.00
Last Week <i>10-31-2002</i>	0.00	100.00	53.28	0.00	0.00	0.00
3 Months Ago <i>08-08-2002</i>	0.00	100.00	1.83	0.00	0.00	0.00
Start of Calendar Year <i>01-03-2002</i>	68.35	31.65	6.61	0.00	0.00	0.00
Start of Water Year <i>10-03-2002</i>	0.00	100.00	0.32	0.00	0.00	0.00
One Year Ago <i>11-08-2001</i>	0.00	100.00	99.76	69.92	28.86	0.00

Intensity:

- None
- D0 Abnormally Dry
- D1 Moderate Drought
- D2 Severe Drought
- D3 Extreme Drought
- D4 Exceptional Drought

The Drought Monitor focuses on broad-scale conditions. Local conditions may vary. For more information on the Drought Monitor, go to <https://droughtmonitor.unl.edu/About.aspx>

Author:

Mark Svoboda
 National Drought Mitigation Center

