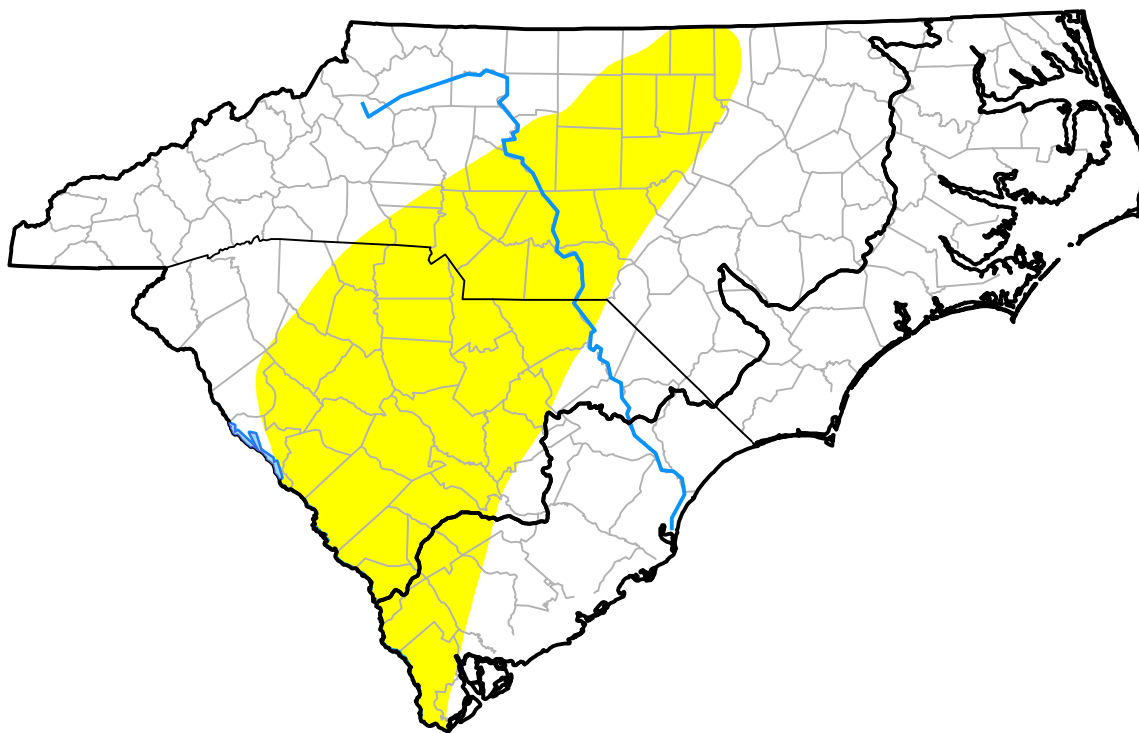


U.S. Drought Monitor

Coastal Carolinas RDEWS

January 7, 2003
 (Released Thursday, Jan. 9, 2003)
 Valid 7 a.m. EST



Drought Conditions (Percent Area)

	None	D0	D1	D2	D3	D4
Current	92.60	7.40	0.00	0.00	0.00	0.00
Last Week <i>01-02-2003</i>	92.36	7.64	0.00	0.00	0.00	0.00
3 Months Ago <i>10-10-2002</i>	0.00	46.71	36.58	13.90	2.81	0.00
Start of Calendar Year <i>01-02-2003</i>	92.36	7.64	0.00	0.00	0.00	0.00
Start of Water Year <i>10-03-2002</i>	40.81	31.75	16.63	10.81	0.00	0.00
One Year Ago <i>01-10-2002</i>	0.00	0.00	9.56	50.95	39.50	0.00

Intensity:

- None
- D0 Abnormally Dry
- D1 Moderate Drought
- D2 Severe Drought
- D3 Extreme Drought
- D4 Exceptional Drought

The Drought Monitor focuses on broad-scale conditions. Local conditions may vary. For more information on the Drought Monitor, go to <https://droughtmonitor.unl.edu/About.aspx>

Author:

Richard Tinker
 CPC/NOAA/NWS/NCEP

