

# U.S. Drought Monitor

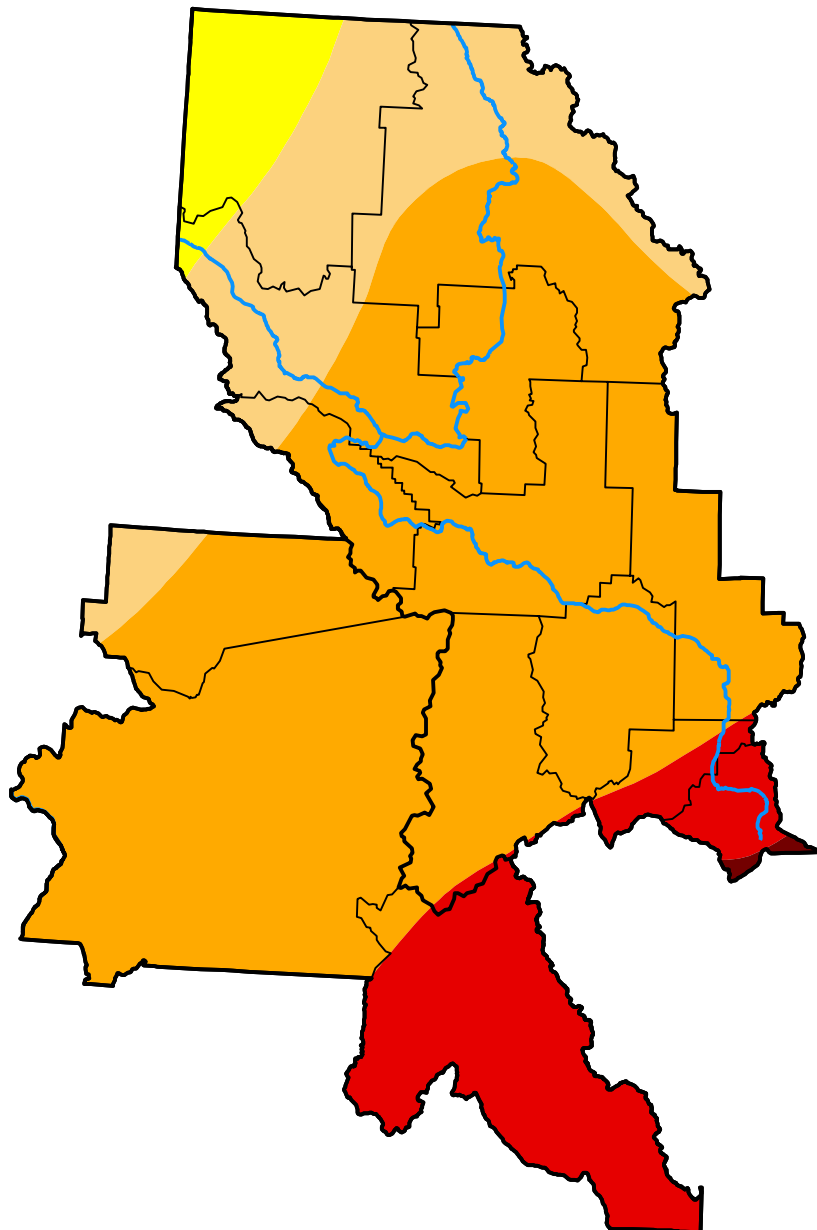
## Missoula, MT WFO

**January 7, 2003**  
 (Released Thursday, Jan. 9, 2003)

Valid 7 a.m. EST

*Drought Conditions (Percent Area)*

	None	D0	D1	D2	D3	D4
<b>Current</b>	0.00	4.56	15.98	65.56	13.68	0.21
<b>Last Week</b> <i>01-02-2003</i>	0.00	0.01	22.94	62.17	14.88	0.00
<b>3 Months Ago</b> <i>10-10-2002</i>	0.00	60.42	19.57	14.68	5.33	0.00
<b>Start of Calendar Year</b> <i>01-02-2003</i>	0.00	0.01	22.94	62.17	14.88	0.00
<b>Start of Water Year</b> <i>10-03-2002</i>	0.00	71.24	18.36	6.37	4.02	0.00
<b>One Year Ago</b> <i>01-10-2002</i>	0.00	0.00	0.00	93.41	6.59	0.00



***Intensity:***

- None
- D0 Abnormally Dry
- D1 Moderate Drought
- D2 Severe Drought
- D3 Extreme Drought
- D4 Exceptional Drought

*The Drought Monitor focuses on broad-scale conditions. Local conditions may vary. For more information on the Drought Monitor, go to <https://droughtmonitor.unl.edu/About.aspx>*

***Author:***

Richard Tinker  
 CPC/NOAA/NWS/NCEP

