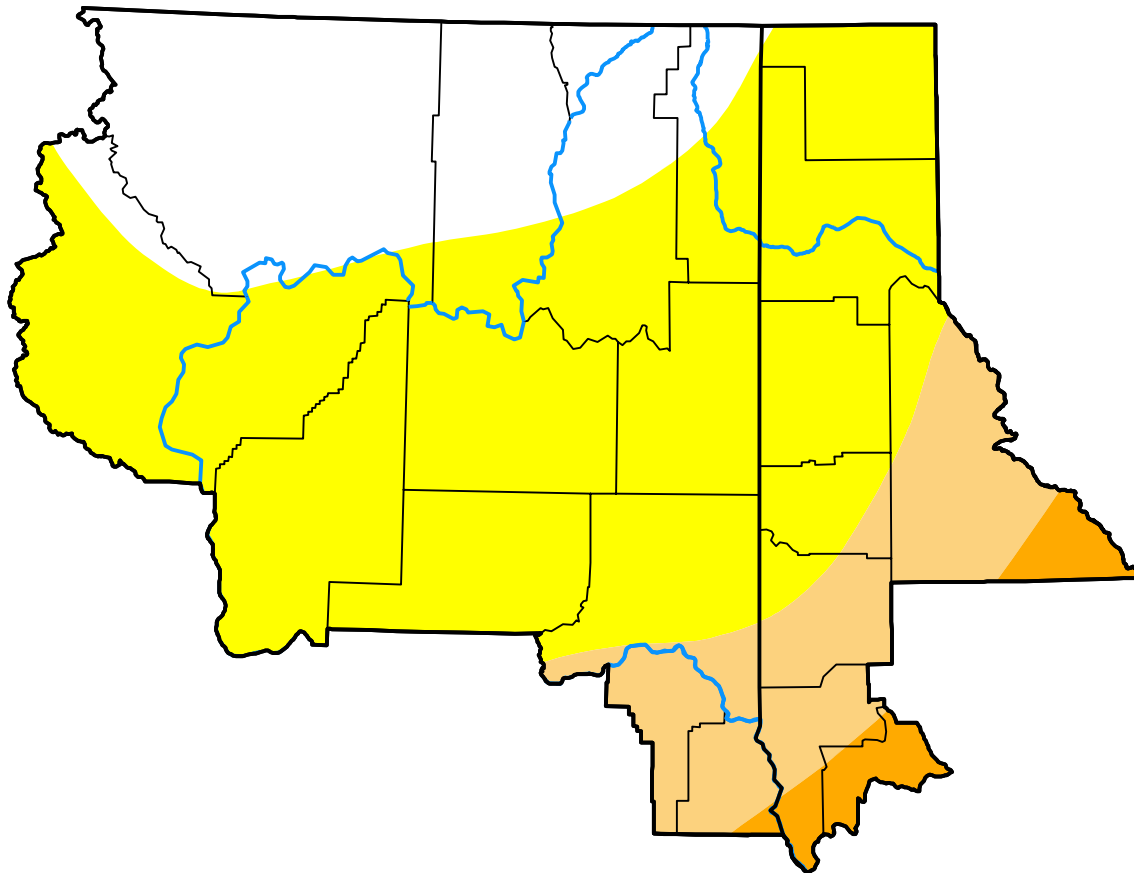


U.S. Drought Monitor Spokane, WA WFO

January 7, 2003
(Released Thursday, Jan. 9, 2003)
Valid 7 a.m. EST

Drought Conditions (Percent Area)

	None	D0	D1	D2	D3	D4
Current	23.36	60.42	13.13	3.09	0.00	0.00
Last Week <i>01-02-2003</i>	0.00	84.95	12.52	2.53	0.00	0.00
3 Months Ago <i>10-10-2002</i>	3.65	96.35	0.00	0.00	0.00	0.00
Start of Calendar Year <i>01-02-2003</i>	0.00	84.95	12.52	2.53	0.00	0.00
Start of Water Year <i>10-03-2002</i>	7.24	92.76	0.00	0.00	0.00	0.00
One Year Ago <i>01-10-2002</i>	13.67	39.21	31.28	15.84	0.00	0.00



Intensity:



The Drought Monitor focuses on broad-scale conditions. Local conditions may vary. For more information on the Drought Monitor, go to <https://droughtmonitor.unl.edu/About.aspx>

Author:

Richard Tinker
CPC/NOAA/NWS/NCEP



droughtmonitor.unl.edu