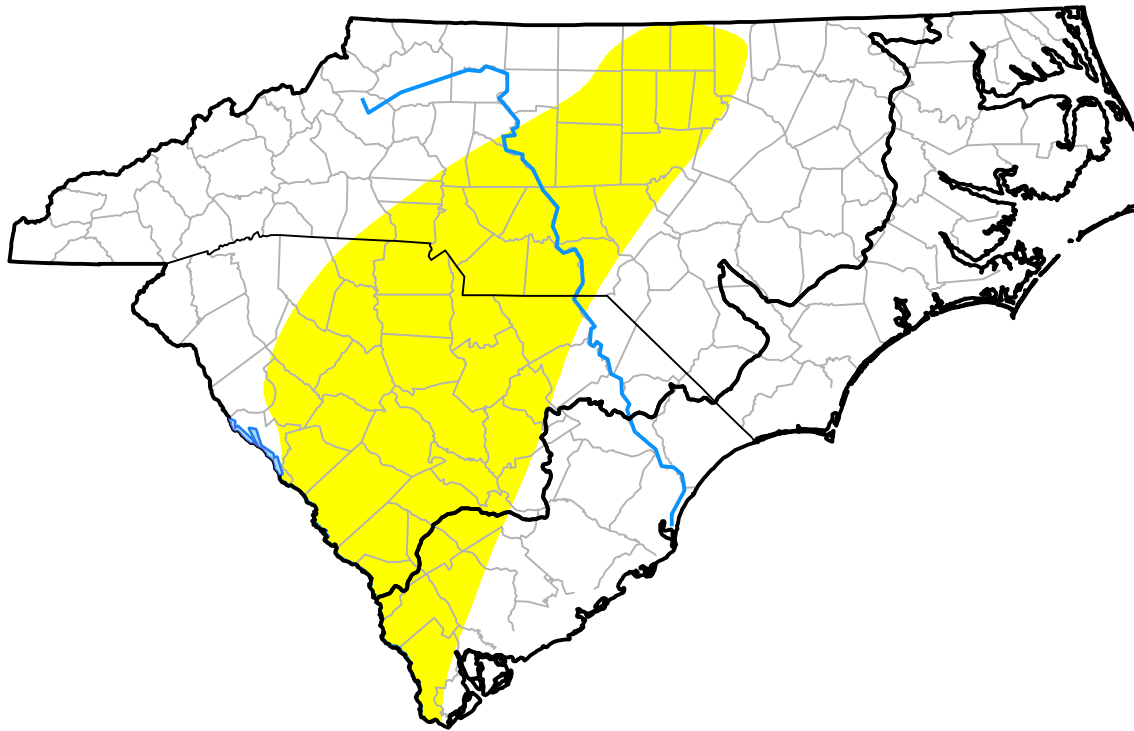


Carolinas RDEWS and Surrounding Areas

(Released Thursday, Jan. 16, 2003)
 10:00 a.m. EST



Drought Conditions (Percent Area)

	None	D0	D1	D2	D3	D4
Current	66.88	33.12	0.00	0.00	0.00	0.00
Last Week <i>01-09-2003</i>	66.95	33.05	0.00	0.00	0.00	0.00
3 Months Ago <i>10-17-2002</i>	18.53	22.59	18.03	23.67	17.17	0.00
Start of Calendar Year <i>01-02-2003</i>	67.75	32.25	0.00	0.00	0.00	0.00
Start of Water Year <i>10-03-2002</i>	9.12	14.70	14.62	34.34	18.67	8.55
One Year Ago <i>01-17-2002</i>	0.00	0.00	12.92	62.15	24.94	0.00

Intensity:

- None
- D0 Abnormally Dry
- D1 Moderate Drought
- D2 Severe Drought
- D3 Extreme Drought
- D4 Exceptional Drought

The Drought Monitor focuses on broad-scale conditions. Local conditions may vary. For more information on the Drought Monitor, go to <https://droughtmonitor.unl.edu/About.aspx>

Author:

Richard Tinker
 CPC/NOAA/NWS/NCEP

