

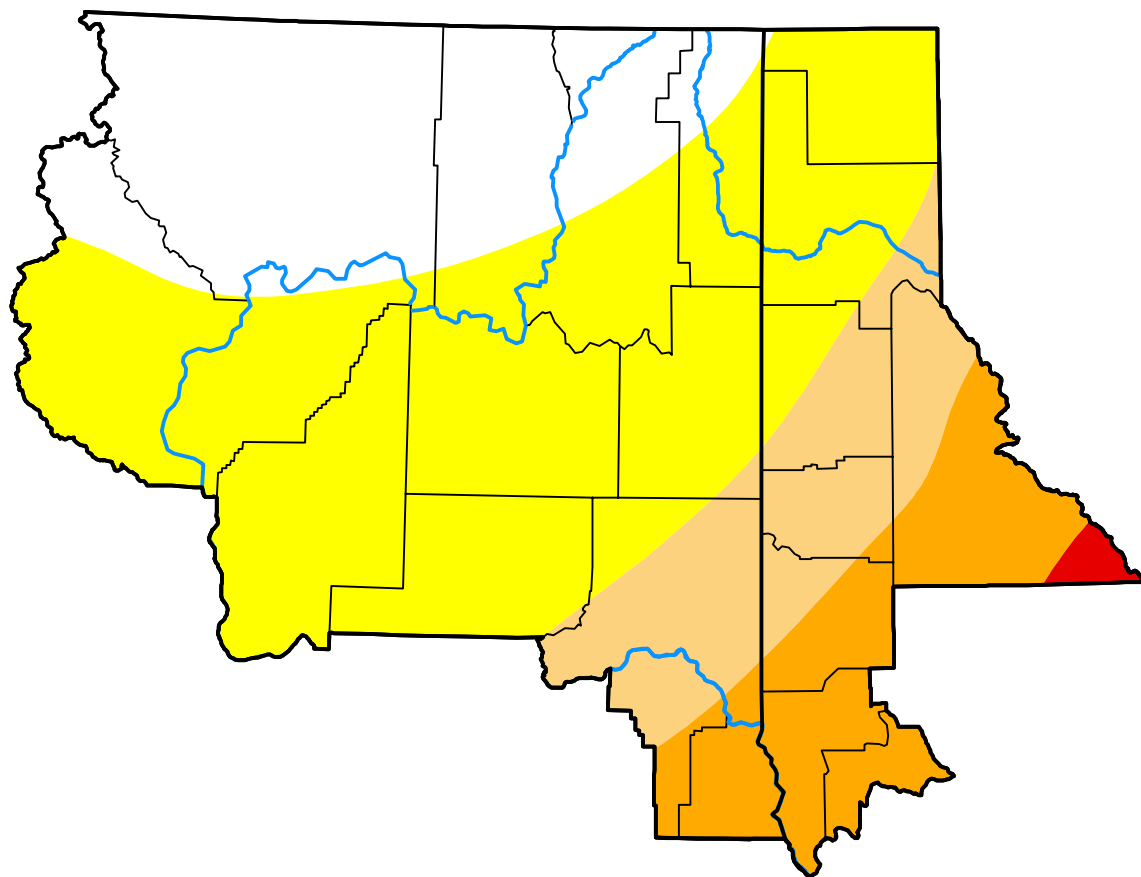
# U.S. Drought Monitor Spokane, WA WFO

January 14, 2003  
(Released Thursday, Jan. 16, 2003)

Valid 7 a.m. EST

### Drought Conditions (Percent Area)

	None	D0-D4	D1-D4	D2-D4	D3-D4	D4
<b>Current</b>	24.72	75.28	26.21	12.65	0.56	0.00
<b>Last Week</b> <i>01-09-2003</i>	23.36	76.64	16.22	3.09	0.00	0.00
<b>3 Months Ago</b> <i>10-17-2002</i>	4.78	95.22	0.00	0.00	0.00	0.00
<b>Start of Calendar Year</b> <i>01-02-2003</i>	0.00	100.00	15.05	2.53	0.00	0.00
<b>Start of Water Year</b> <i>10-03-2002</i>	7.24	92.76	0.00	0.00	0.00	0.00
<b>One Year Ago</b> <i>01-17-2002</i>	19.05	80.95	25.35	0.04	0.00	0.00



### Intensity:

- None
- D0 Abnormally Dry
- D1 Moderate Drought
- D2 Severe Drought
- D3 Extreme Drought
- D4 Exceptional Drought

The Drought Monitor focuses on broad-scale conditions. Local conditions may vary. For more information on the Drought Monitor, go to <https://droughtmonitor.unl.edu/About.aspx>

### Author:

Richard Tinker  
CPC/NOAA/NWS/NCEP



[droughtmonitor.unl.edu](https://droughtmonitor.unl.edu)