

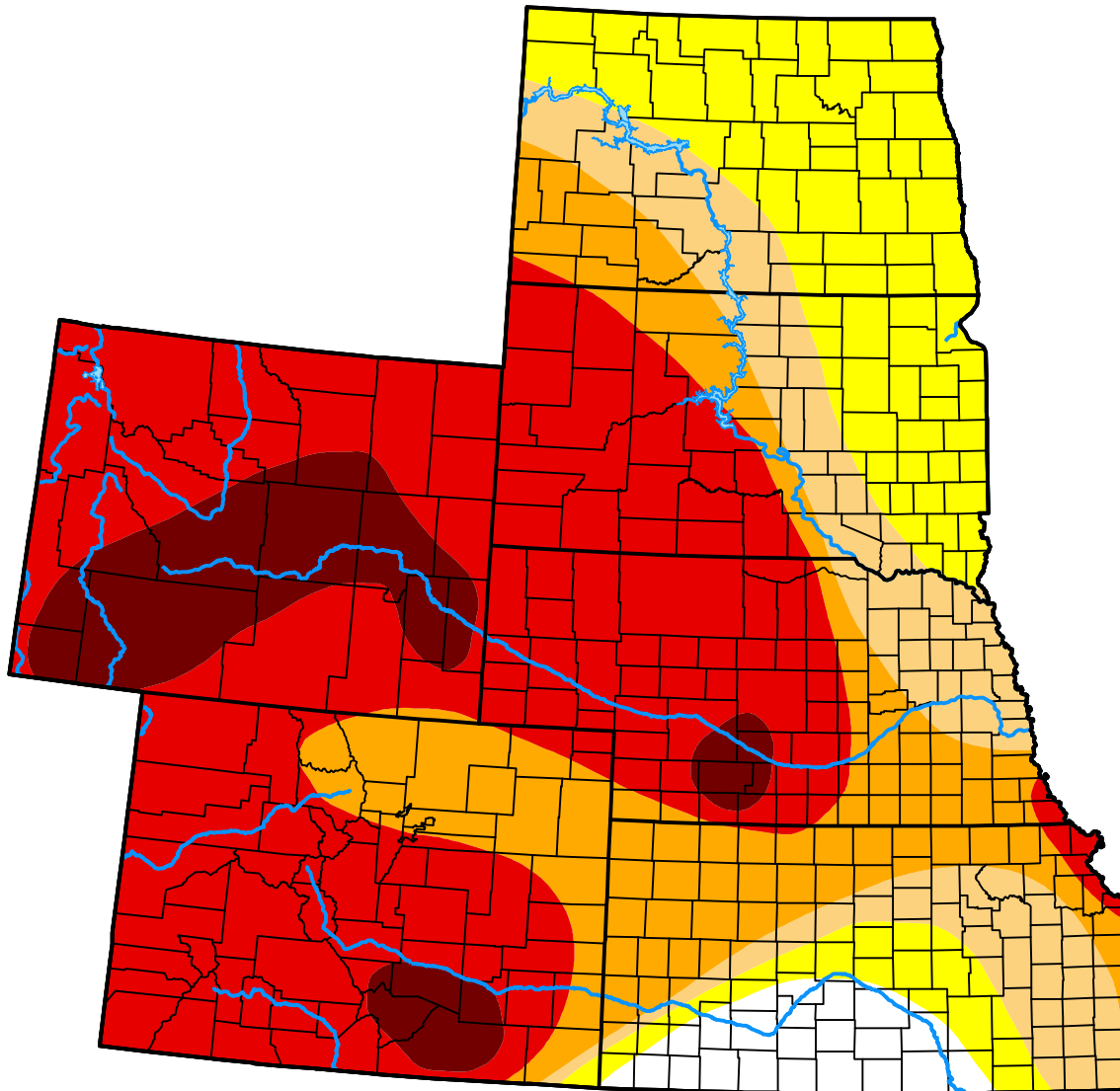
U.S. Drought Monitor

High Plains

January 28, 2003
 (Released Thursday, Jan. 30, 2003)
 Valid 7 a.m. EST

Drought Conditions (Percent Area)

	None	D0-D4	D1-D4	D2-D4	D3-D4	D4
Current	3.62	96.38	80.21	68.52	51.43	9.06
Last Week <i>01-21-2003</i>	4.16	95.84	79.41	68.16	51.66	8.60
3 Months Ago <i>10-29-2002</i>	17.18	82.82	73.94	64.07	44.09	4.22
Start of Calendar Year <i>12-31-2002</i>	11.41	88.59	76.64	66.65	45.68	4.79
Start of Water Year <i>10-01-2002</i>	16.41	83.59	73.36	65.12	49.12	11.49
One Year Ago <i>01-29-2002</i>	22.98	77.02	31.46	12.32	4.51	0.00



Intensity:

- None
- D0 Abnormally Dry
- D1 Moderate Drought
- D2 Severe Drought
- D3 Extreme Drought
- D4 Exceptional Drought

The Drought Monitor focuses on broad-scale conditions. Local conditions may vary. For more information on the Drought Monitor, go to <https://droughtmonitor.unl.edu/About.aspx>

Author:

Brad Rippey
 U.S. Department of Agriculture



droughtmonitor.unl.edu