

# U.S. Drought Monitor

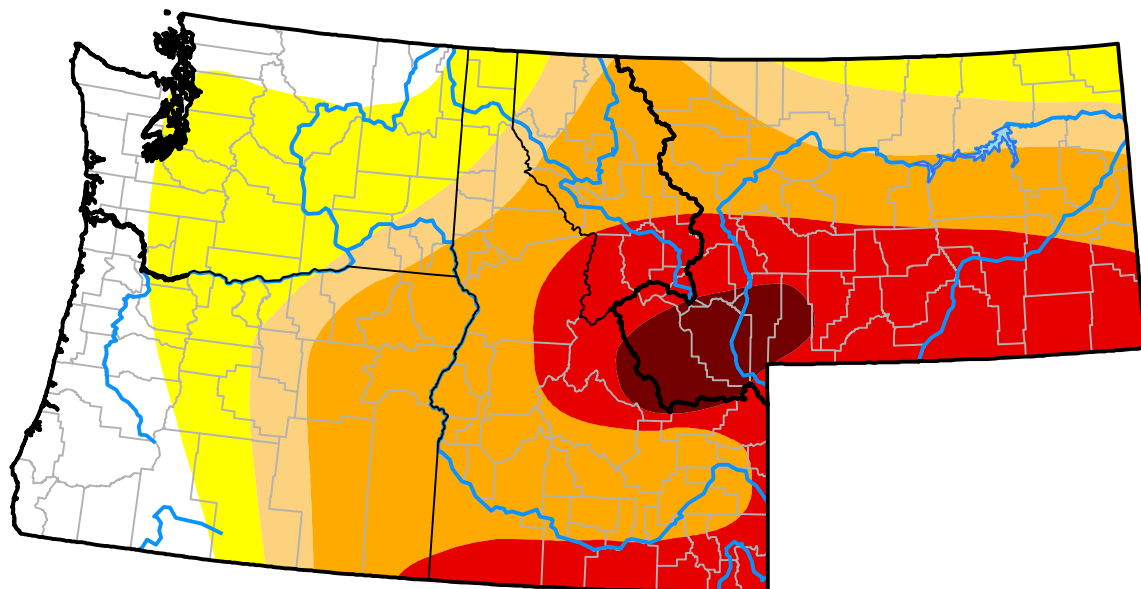
## Pacific Northwest RDEWS

January 28, 2003  
 (Released Thursday, Jan. 30, 2003)

Valid 7 a.m. EST

Drought Conditions (Percent Area)

	None	D0	D1	D2	D3	D4
<b>Current</b>	19.95	23.70	9.71	33.08	12.86	0.69
<b>Last Week</b> <i>01-23-2003</i>	21.51	21.56	9.14	31.81	15.26	0.71
<b>3 Months Ago</b> <i>10-31-2002</i>	6.44	44.50	12.96	30.93	5.18	0.00
<b>Start of Calendar Year</b> <i>01-02-2003</i>	16.76	25.86	13.79	39.77	3.81	0.00
<b>Start of Water Year</b> <i>10-03-2002</i>	17.77	35.70	12.97	26.66	6.90	0.00
<b>One Year Ago</b> <i>01-31-2002</i>	29.94	25.15	22.47	21.42	1.01	0.00



Intensity:

- None
- D0 Abnormally Dry
- D1 Moderate Drought
- D2 Severe Drought
- D3 Extreme Drought
- D4 Exceptional Drought

The Drought Monitor focuses on broad-scale conditions. Local conditions may vary. For more information on the Drought Monitor, go to <https://droughtmonitor.unl.edu/About.aspx>

Author:

Brad Rippey  
 U.S. Department of Agriculture



[droughtmonitor.unl.edu](https://droughtmonitor.unl.edu)