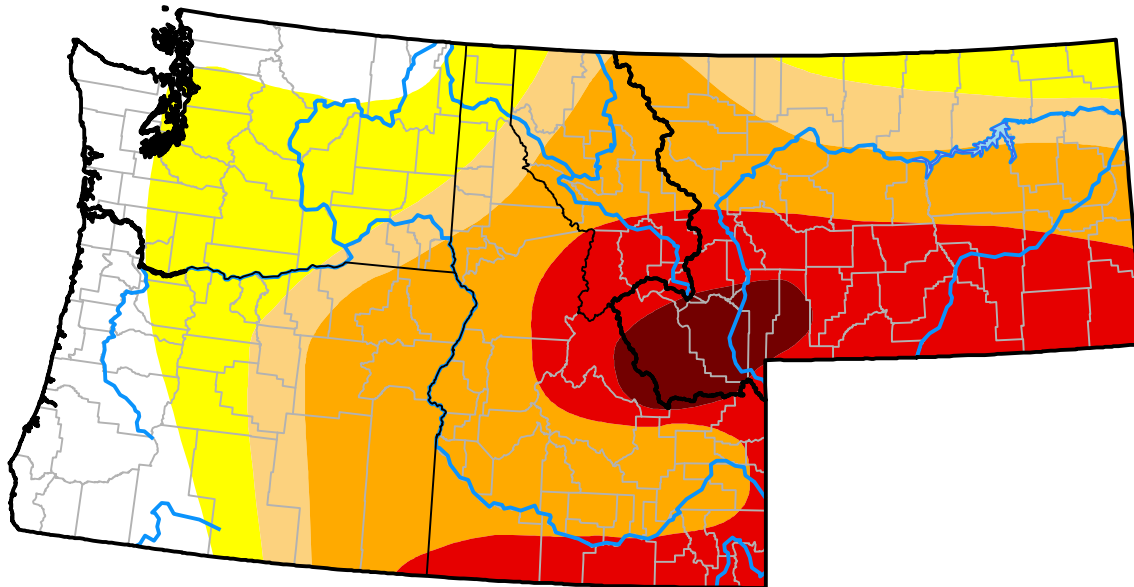


Northwest RDEWS and Surrounding Areas

Drought Conditions (Percent Area)

	None	D0-D4	D1-D4	D2-D4	D3-D4	D4
Current	13.79	86.21	67.07	55.48	23.55	3.66
Last Week <i>01-23-2003</i>	14.87	85.13	66.95	56.01	24.51	3.60
3 Months Ago <i>10-31-2002</i>	4.45	95.55	57.65	40.75	14.22	0.00
Start of Calendar Year <i>01-02-2003</i>	11.58	88.42	66.42	50.18	15.32	0.00
Start of Water Year <i>10-03-2002</i>	13.10	86.90	52.88	36.97	13.08	0.00
One Year Ago <i>01-31-2002</i>	20.69	79.31	61.93	41.89	16.37	0.00



Intensity:



The Drought Monitor focuses on broad-scale conditions. Local conditions may vary. For more information on the Drought Monitor, go to <https://droughtmonitor.unl.edu/About.aspx>

Author:

Brad Rippey
U.S. Department of Agriculture

