

# U.S. Drought Monitor

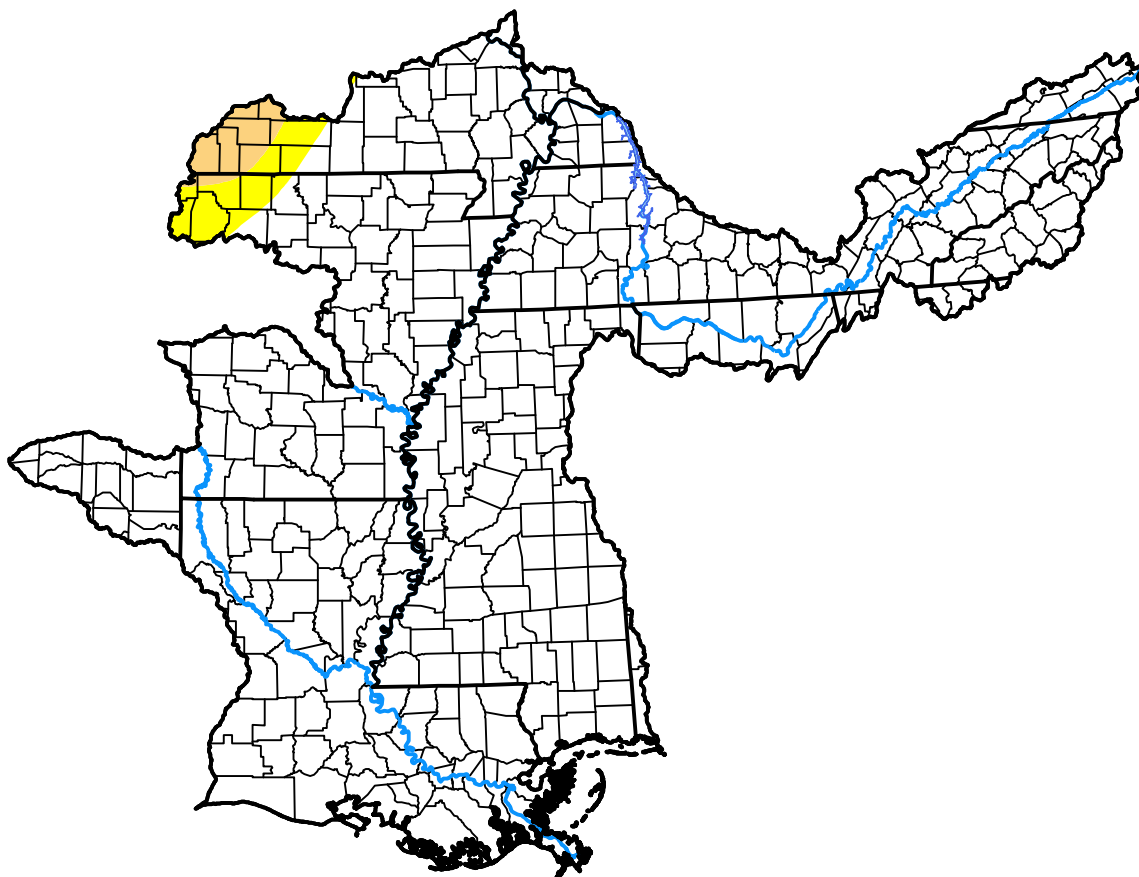
## Lower Mississippi RFC

January 28, 2003  
(Released Thursday, Jan. 30, 2003)

Valid 7 a.m. EST

### Drought Conditions (Percent Area)

	None	D0-D4	D1-D4	D2-D4	D3-D4	D4
<b>Current</b>	96.61	3.39	1.36	0.00	0.00	0.00
<b>Last Week</b> <i>01-23-2003</i>	95.67	4.33	1.11	0.00	0.00	0.00
<b>3 Months Ago</b> <i>10-31-2002</i>	86.70	13.30	5.54	0.97	0.00	0.00
<b>Start of Calendar Year</b> <i>01-02-2003</i>	94.46	5.54	0.31	0.00	0.00	0.00
<b>Start of Water Year</b> <i>10-03-2002</i>	73.54	26.46	8.90	3.11	0.25	0.00
<b>One Year Ago</b> <i>01-31-2002</i>	95.15	4.85	2.44	0.00	0.00	0.00



### Intensity:



The Drought Monitor focuses on broad-scale conditions. Local conditions may vary. For more information on the Drought Monitor, go to <https://droughtmonitor.unl.edu/About.aspx>

### Author:

Brad Rippey  
U.S. Department of Agriculture



[droughtmonitor.unl.edu](https://droughtmonitor.unl.edu)