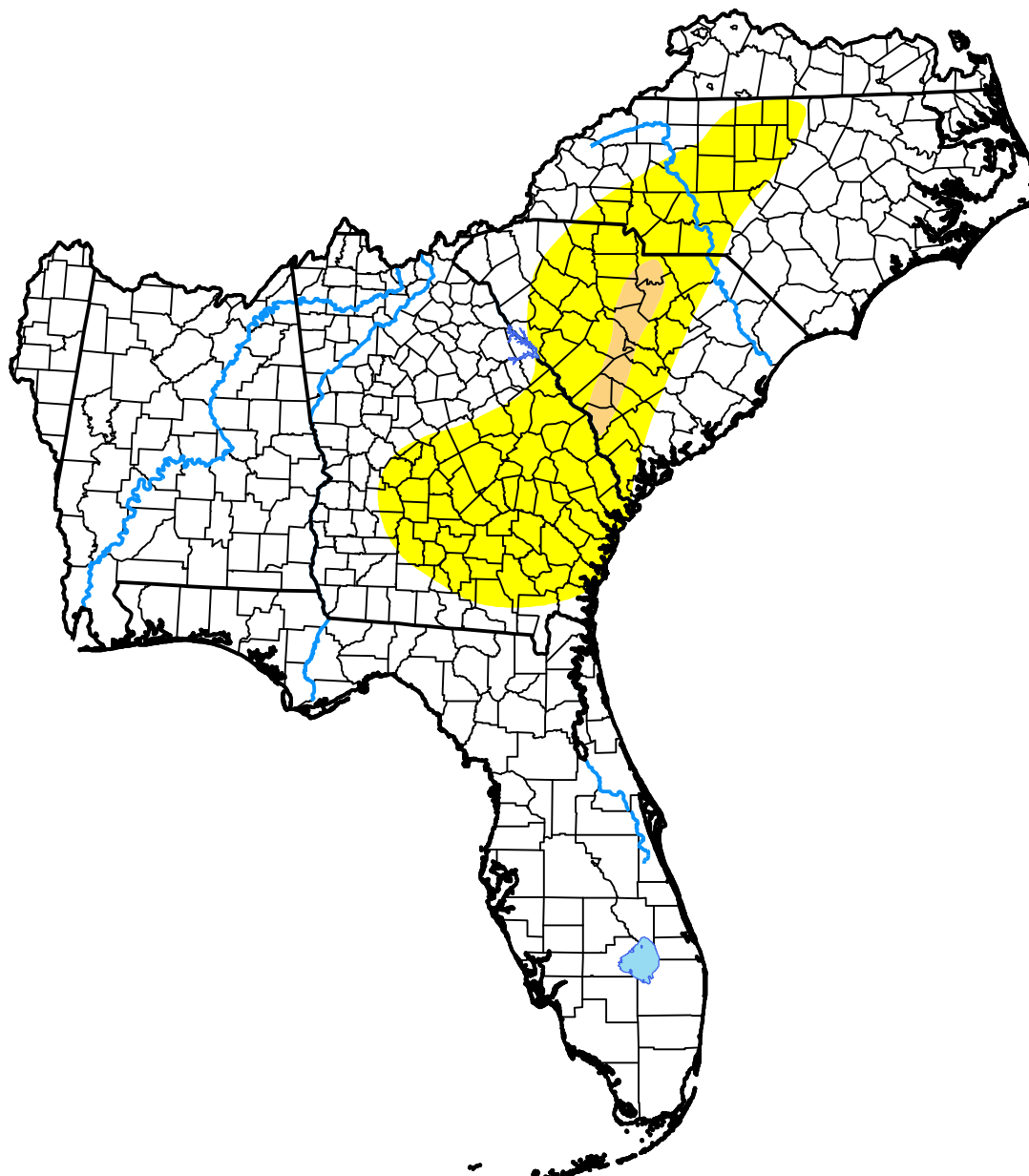


# U.S. Drought Monitor

## Southeast RFC

January 28, 2003  
 (Released Thursday, Jan. 30, 2003)

Valid 7 a.m. EST



Drought Conditions (Percent Area)

	None	D0-D4	D1-D4	D2-D4	D3-D4	D4
<b>Current</b>	79.59	20.41	1.25	0.00	0.00	0.00
<b>Last Week</b> <i>01-23-2003</i>	80.51	19.49	1.21	0.00	0.00	0.00
<b>3 Months Ago</b> <i>10-31-2002</i>	51.39	48.61	32.09	17.96	1.30	0.00
<b>Start of Calendar Year</b> <i>01-02-2003</i>	78.97	21.03	0.00	0.00	0.00	0.00
<b>Start of Water Year</b> <i>10-03-2002</i>	45.93	54.07	42.44	33.82	11.69	3.55
<b>One Year Ago</b> <i>01-31-2002</i>	30.03	69.97	55.25	35.70	11.34	0.00

**Intensity:**

- None
- D0 Abnormally Dry
- D1 Moderate Drought
- D2 Severe Drought
- D3 Extreme Drought
- D4 Exceptional Drought

The Drought Monitor focuses on broad-scale conditions. Local conditions may vary. For more information on the Drought Monitor, go to <https://droughtmonitor.unl.edu/About.aspx>

**Author:**

Brad Rippey  
 U.S. Department of Agriculture



[droughtmonitor.unl.edu](https://droughtmonitor.unl.edu)