

U.S. Drought Monitor

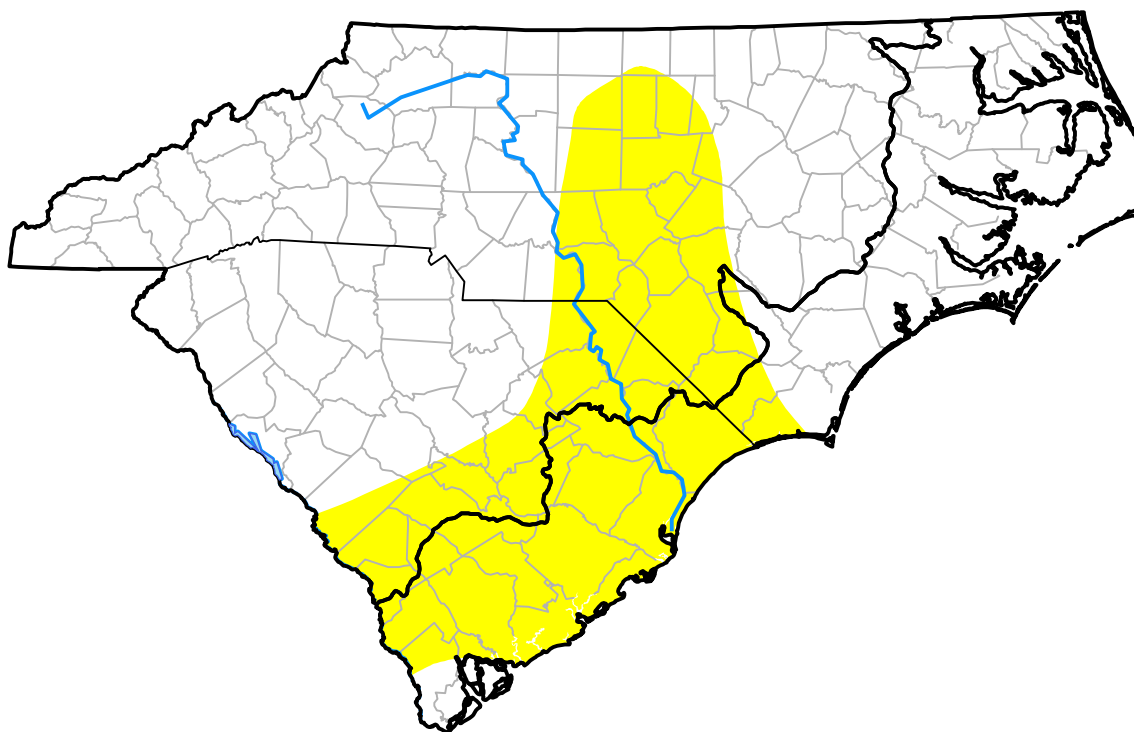
Coastal Carolinas RDEWS

March 18, 2003
(Released Thursday, Mar. 20, 2003)

Valid 7 a.m. EST

Drought Conditions (Percent Area)

	None	D0	D1	D2	D3	D4
Current	60.08	39.92	0.00	0.00	0.00	0.00
Last Week <i>03-13-2003</i>	59.73	40.27	0.00	0.00	0.00	0.00
3 Months Ago <i>12-19-2002</i>	93.01	6.99	0.00	0.00	0.00	0.00
Start of Calendar Year <i>01-02-2003</i>	92.36	7.64	0.00	0.00	0.00	0.00
Start of Water Year <i>10-03-2002</i>	40.81	31.75	16.63	10.81	0.00	0.00
One Year Ago <i>03-21-2002</i>	0.00	0.00	0.00	61.49	38.51	0.00



Intensity:

- None
- D0 Abnormally Dry
- D1 Moderate Drought
- D2 Severe Drought
- D3 Extreme Drought
- D4 Exceptional Drought

The Drought Monitor focuses on broad-scale conditions. Local conditions may vary. For more information on the Drought Monitor, go to <https://droughtmonitor.unl.edu/About.aspx>

Author:

Richard Heim
 NCEI/NOAA



droughtmonitor.unl.edu