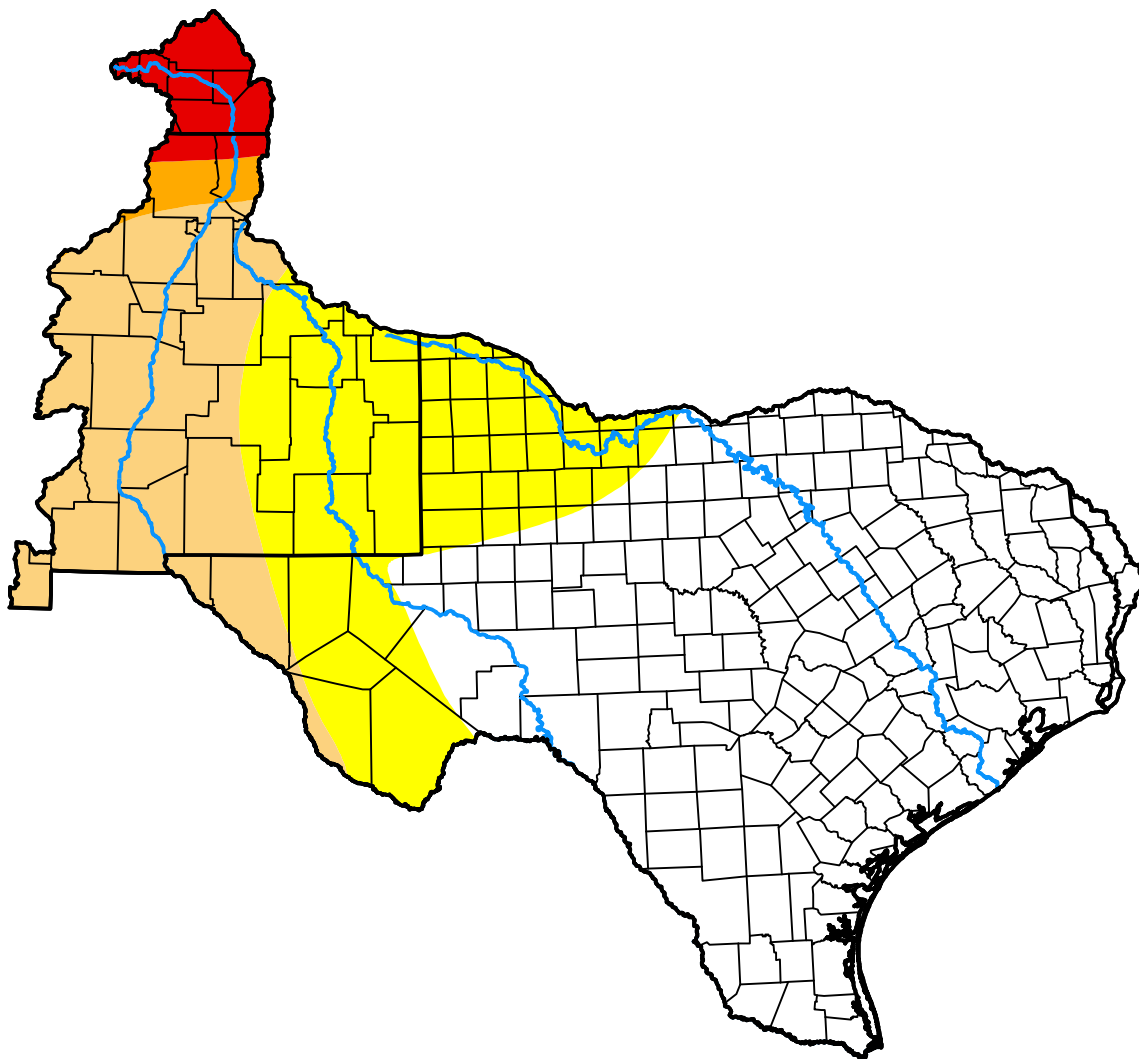


U.S. Drought Monitor West Gulf RFC

March 18, 2003
(Released Thursday, Mar. 20, 2003)
Valid 7 a.m. EST



Drought Conditions (Percent Area)

	None	D0-D4	D1-D4	D2-D4	D3-D4	D4
Current	56.03	43.97	21.14	4.19	3.02	0.00
Last Week <i>03-13-2003</i>	55.59	44.41	21.93	4.23	2.97	0.01
3 Months Ago <i>12-19-2002</i>	63.41	36.59	28.29	5.51	2.59	0.00
Start of Calendar Year <i>01-02-2003</i>	64.14	35.86	25.91	4.06	2.59	0.00
Start of Water Year <i>10-03-2002</i>	35.32	64.68	45.50	11.35	2.99	2.05
One Year Ago <i>03-21-2002</i>	26.08	73.92	56.08	17.60	3.30	0.00

Intensity:

	None		D2 Severe Drought
	D0 Abnormally Dry		D3 Extreme Drought
	D1 Moderate Drought		D4 Exceptional Drought

The Drought Monitor focuses on broad-scale conditions. Local conditions may vary. For more information on the Drought Monitor, go to <https://droughtmonitor.unl.edu/About.aspx>

Author:

Richard Heim
NCEI/NOAA



droughtmonitor.unl.edu