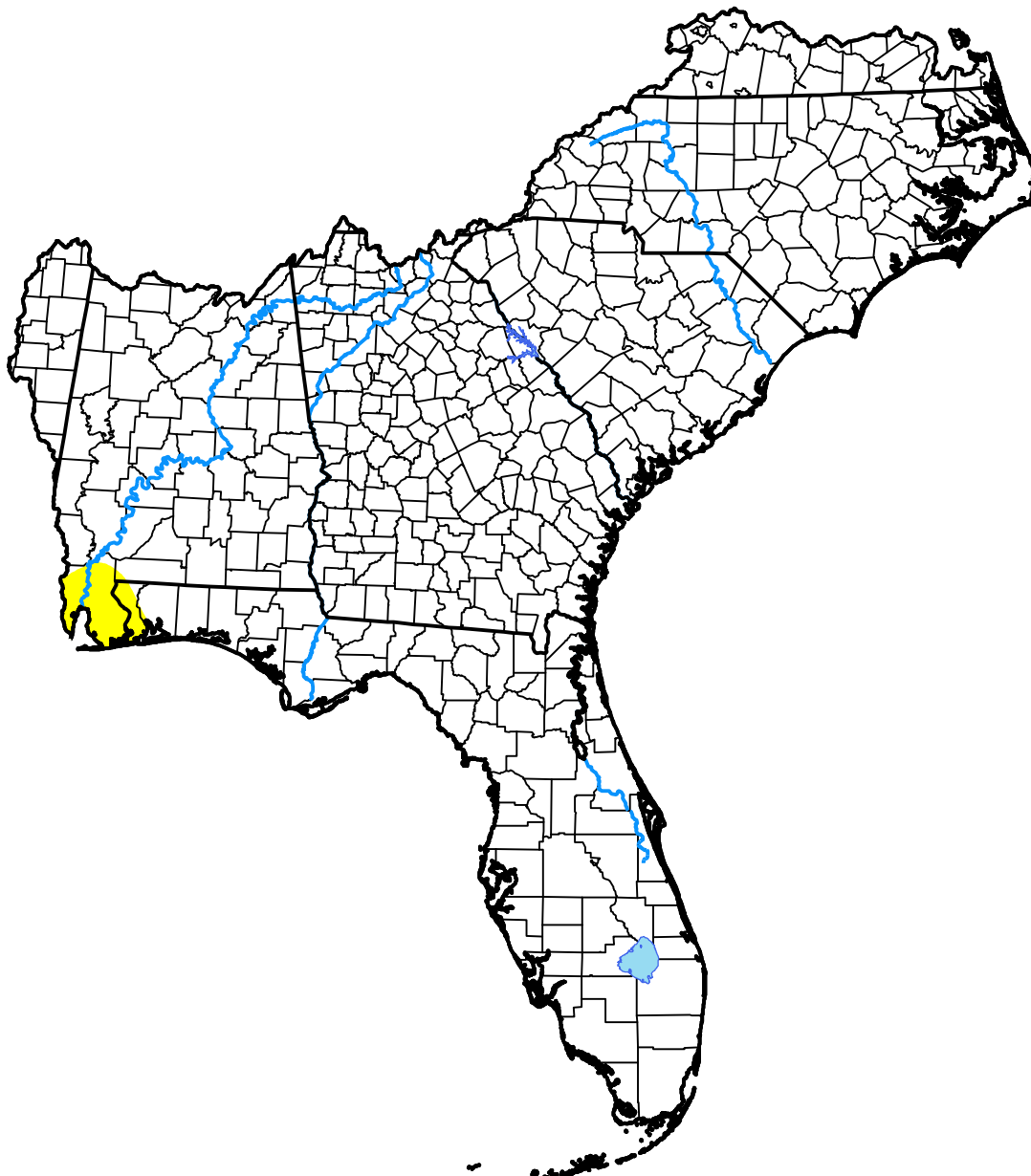


U.S. Drought Monitor

Southeast RFC

May 6, 2003
 (Released Thursday, May. 8, 2003)
 Valid 8 a.m. EDT



Drought Conditions (Percent Area)

	None	D0-D4	D1-D4	D2-D4	D3-D4	D4
Current	98.84	1.16	0.00	0.00	0.00	0.00
Last Week <i>05-01-2003</i>	100.00	0.00	0.00	0.00	0.00	0.00
3 Months Ago <i>02-06-2003</i>	71.63	28.37	1.33	0.00	0.00	0.00
Start of Calendar Year <i>01-02-2003</i>	78.97	21.03	0.00	0.00	0.00	0.00
Start of Water Year <i>10-03-2002</i>	45.93	54.07	42.44	33.82	11.69	3.55
One Year Ago <i>05-09-2002</i>	6.79	93.21	57.07	40.73	15.98	0.00

Intensity:



The Drought Monitor focuses on broad-scale conditions. Local conditions may vary. For more information on the Drought Monitor, go to <https://droughtmonitor.unl.edu/About.aspx>

Author:

Michael Hayes
 National Drought Mitigation Center

