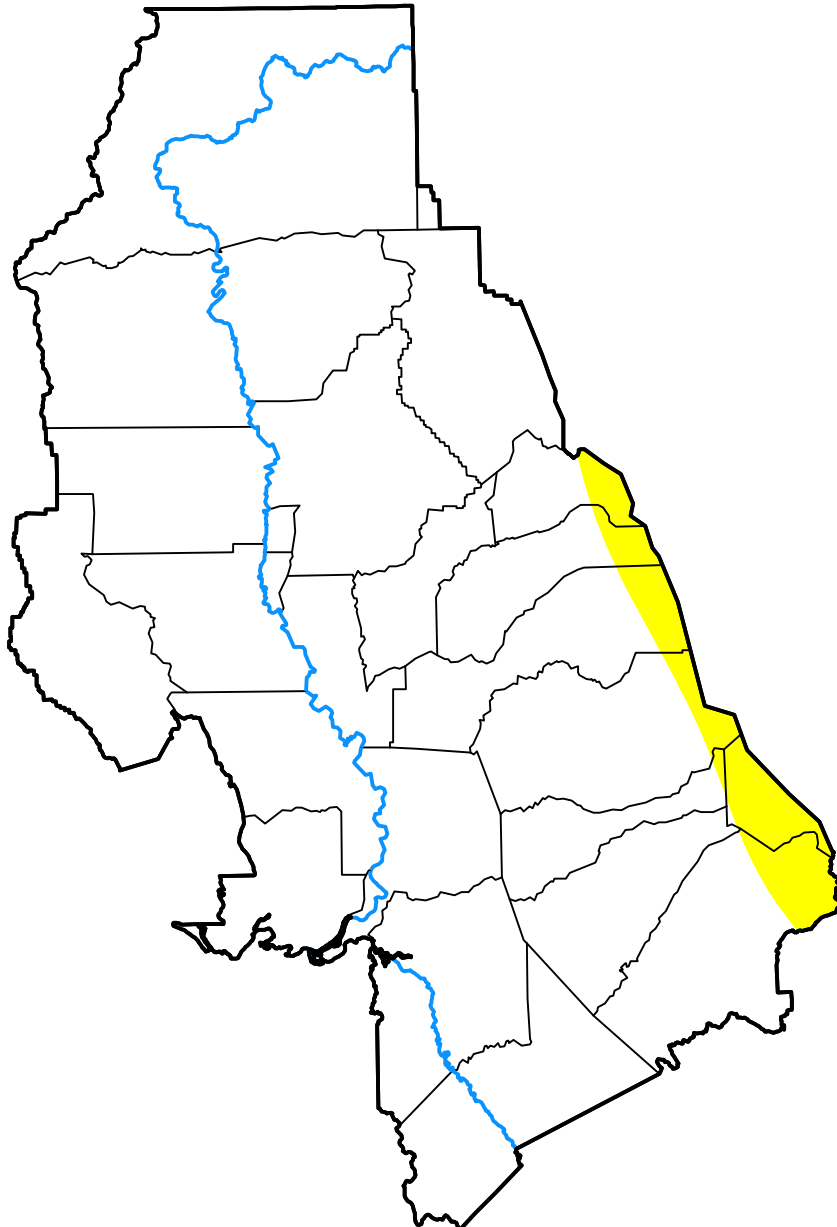


# U.S. Drought Monitor

## Sacramento, CA WFO

**May 6, 2003**  
 (Released Thursday, May. 8, 2003)  
 Valid 8 a.m. EDT



*Drought Conditions (Percent Area)*

	None	D0	D1	D2	D3	D4
<b>Current</b>	95.86	4.14	0.00	0.00	0.00	0.00
<b>Last Week</b> <i>05-01-2003</i>	96.44	3.56	0.00	0.00	0.00	0.00
<b>3 Months Ago</b> <i>02-06-2003</i>	99.97	0.03	0.00	0.00	0.00	0.00
<b>Start of Calendar Year</b> <i>01-02-2003</i>	100.00	0.00	0.00	0.00	0.00	0.00
<b>Start of Water Year</b> <i>10-03-2002</i>	0.00	99.68	0.32	0.00	0.00	0.00
<b>One Year Ago</b> <i>05-09-2002</i>	100.00	0.00	0.00	0.00	0.00	0.00

Intensity:

- None
- D0 Abnormally Dry
- D1 Moderate Drought
- D2 Severe Drought
- D3 Extreme Drought
- D4 Exceptional Drought

*The Drought Monitor focuses on broad-scale conditions. Local conditions may vary. For more information on the Drought Monitor, go to <https://droughtmonitor.unl.edu/About.aspx>*

Author:

Michael Hayes  
 National Drought Mitigation Center

