

U.S. Drought Monitor

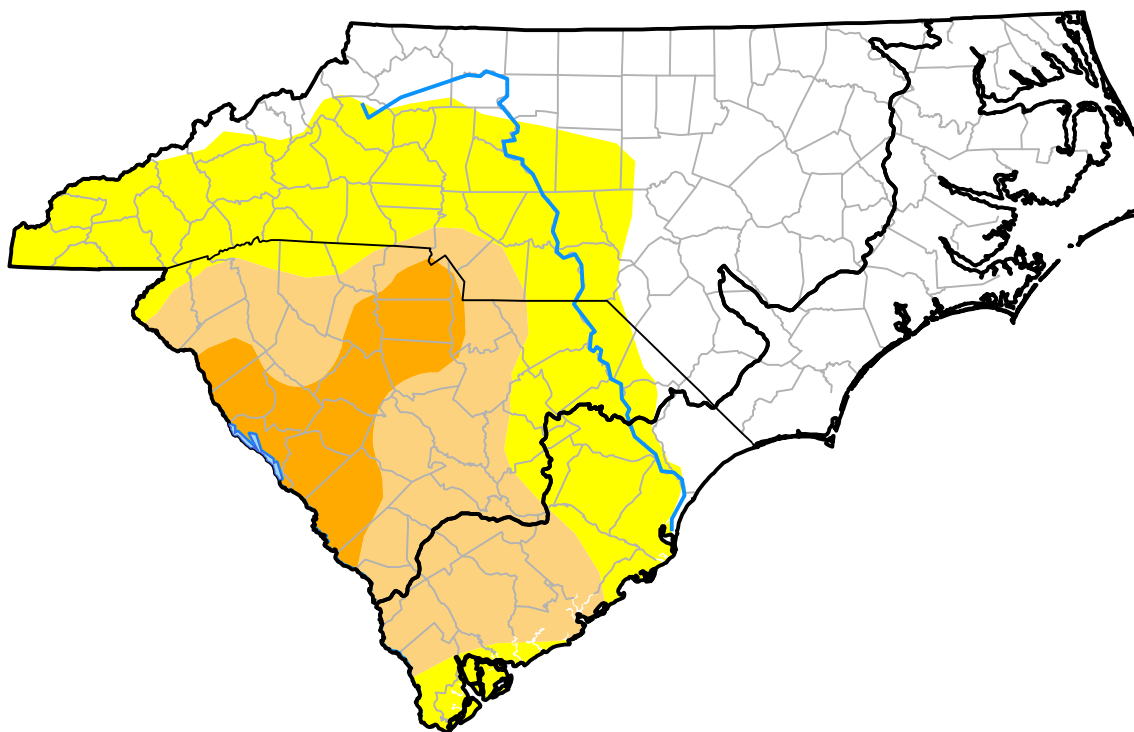
Coastal Carolinas RDEWS

June 15, 2004
(Released Thursday, Jun. 17, 2004)

Valid 8 a.m. EDT

Drought Conditions (Percent Area)

	None	D0	D1	D2	D3	D4
Current	64.44	15.52	20.04	0.00	0.00	0.00
Last Week <i>06-10-2004</i>	64.44	7.37	28.19	0.00	0.00	0.00
3 Months Ago <i>03-18-2004</i>	100.00	0.00	0.00	0.00	0.00	0.00
Start of Calendar Year <i>12-31-2003</i>	100.00	0.00	0.00	0.00	0.00	0.00
Start of Water Year <i>10-02-2003</i>	100.00	0.00	0.00	0.00	0.00	0.00
One Year Ago <i>06-19-2003</i>	100.00	0.00	0.00	0.00	0.00	0.00



Intensity:

- None
- D0 Abnormally Dry
- D1 Moderate Drought
- D2 Severe Drought
- D3 Extreme Drought
- D4 Exceptional Drought

The Drought Monitor focuses on broad-scale conditions. Local conditions may vary. For more information on the Drought Monitor, go to <https://droughtmonitor.unl.edu/About.aspx>

Author:

Brad Rippey
 U.S. Department of Agriculture



droughtmonitor.unl.edu