

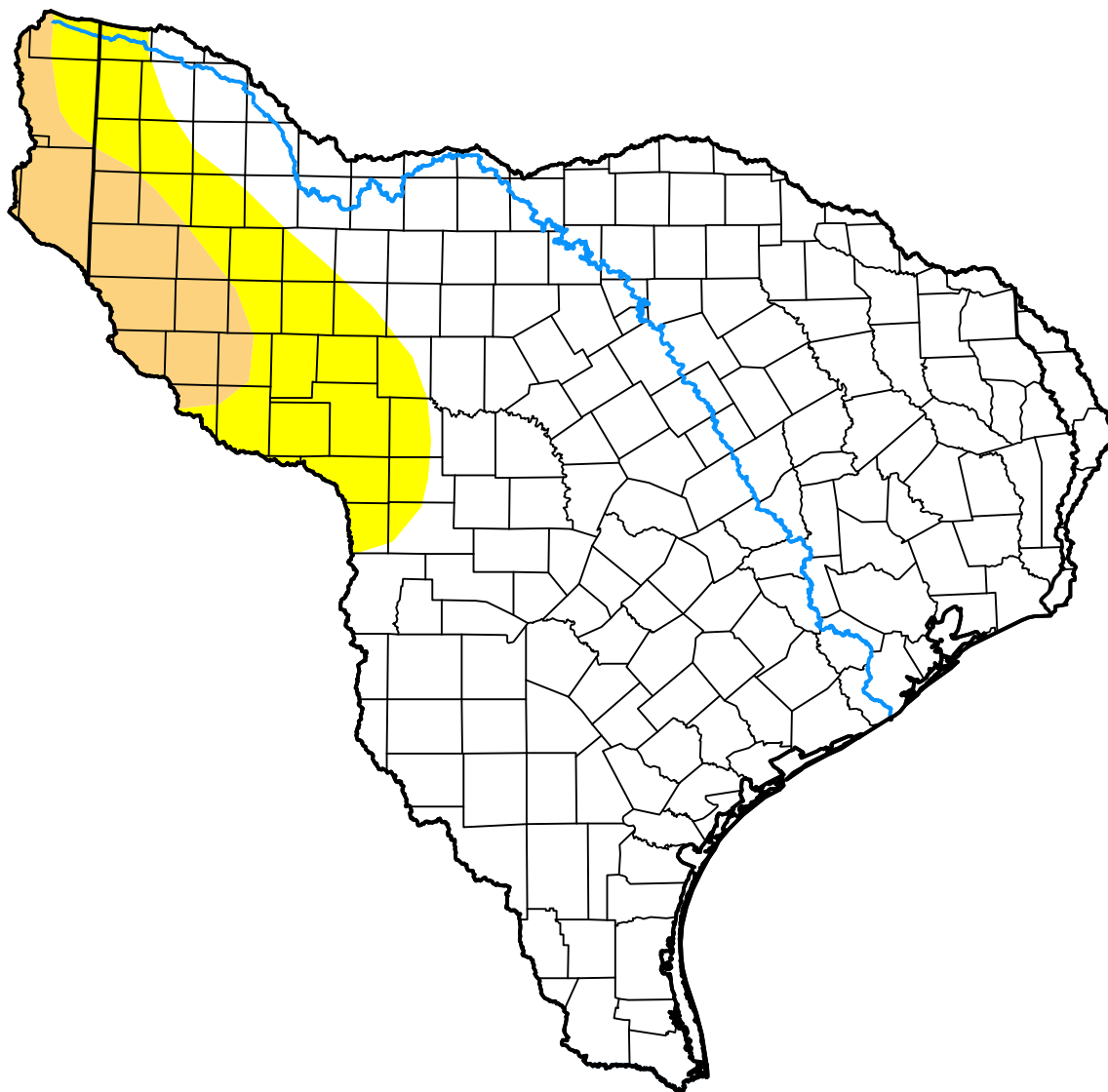
# U.S. Drought Monitor

## Texas-Gulf Watershed

June 22, 2004

(Released Thursday, Jun. 24, 2004)

Valid 8 a.m. EDT



Drought Conditions (Percent Area)

	None	D0	D1	D2	D3	D4
<b>Current</b>	81.81	11.46	6.74	0.00	0.00	0.00
<b>Last Week</b> <i>06-17-2004</i>	77.22	17.90	4.88	0.00	0.00	0.00
<b>3 Months Ago</b> <i>03-25-2004</i>	83.08	12.19	2.06	2.50	0.16	0.00
<b>Start of Calendar Year</b> <i>12-31-2003</i>	55.26	25.87	4.94	6.48	7.45	0.00
<b>Start of Water Year</b> <i>10-02-2003</i>	76.29	8.81	6.56	7.09	1.25	0.00
<b>One Year Ago</b> <i>06-26-2003</i>	15.11	50.58	27.05	7.26	0.00	0.00

Intensity:

- None
- D0 Abnormally Dry
- D1 Moderate Drought
- D2 Severe Drought
- D3 Extreme Drought
- D4 Exceptional Drought

The Drought Monitor focuses on broad-scale conditions. Local conditions may vary. For more information on the Drought Monitor, go to <https://droughtmonitor.unl.edu/About.aspx>

Author:

Brad Rippey  
U.S. Department of Agriculture



[droughtmonitor.unl.edu](https://droughtmonitor.unl.edu)