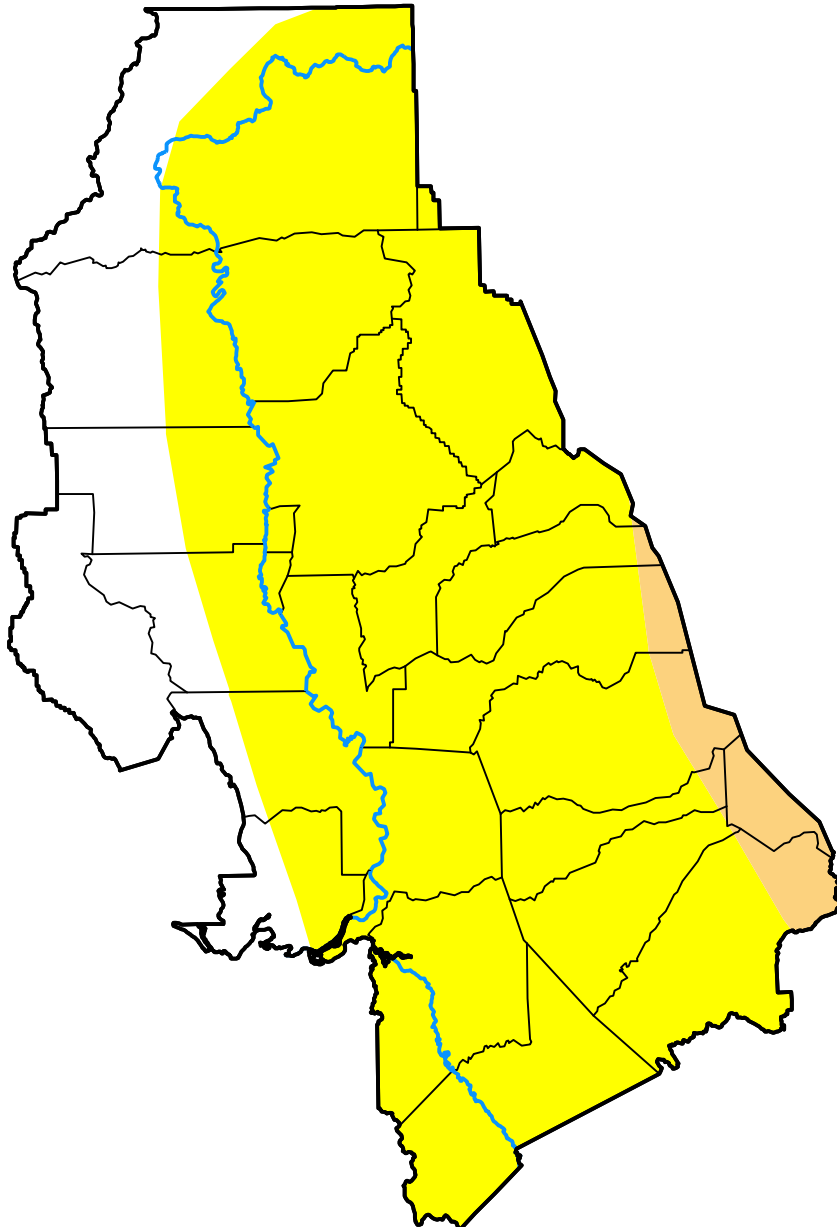


U.S. Drought Monitor Sacramento, CA WFO

June 22, 2004
(Released Thursday, Jun. 24, 2004)
Valid 8 a.m. EDT



Drought Conditions (Percent Area)

	None	D0-D4	D1-D4	D2-D4	D3-D4	D4
Current	19.34	80.66	4.06	0.00	0.00	0.00
Last Week <i>06-17-2004</i>	18.35	81.65	3.75	0.00	0.00	0.00
3 Months Ago <i>03-25-2004</i>	100.00	0.00	0.00	0.00	0.00	0.00
Start of Calendar Year <i>12-31-2003</i>	100.00	0.00	0.00	0.00	0.00	0.00
Start of Water Year <i>10-02-2003</i>	99.84	0.16	0.00	0.00	0.00	0.00
One Year Ago <i>06-26-2003</i>	100.00	0.00	0.00	0.00	0.00	0.00

Intensity:

- None
- D0 Abnormally Dry
- D1 Moderate Drought
- D2 Severe Drought
- D3 Extreme Drought
- D4 Exceptional Drought

The Drought Monitor focuses on broad-scale conditions. Local conditions may vary. For more information on the Drought Monitor, go to <https://droughtmonitor.unl.edu/About.aspx>

Author:

Brad Rippey
U.S. Department of Agriculture

