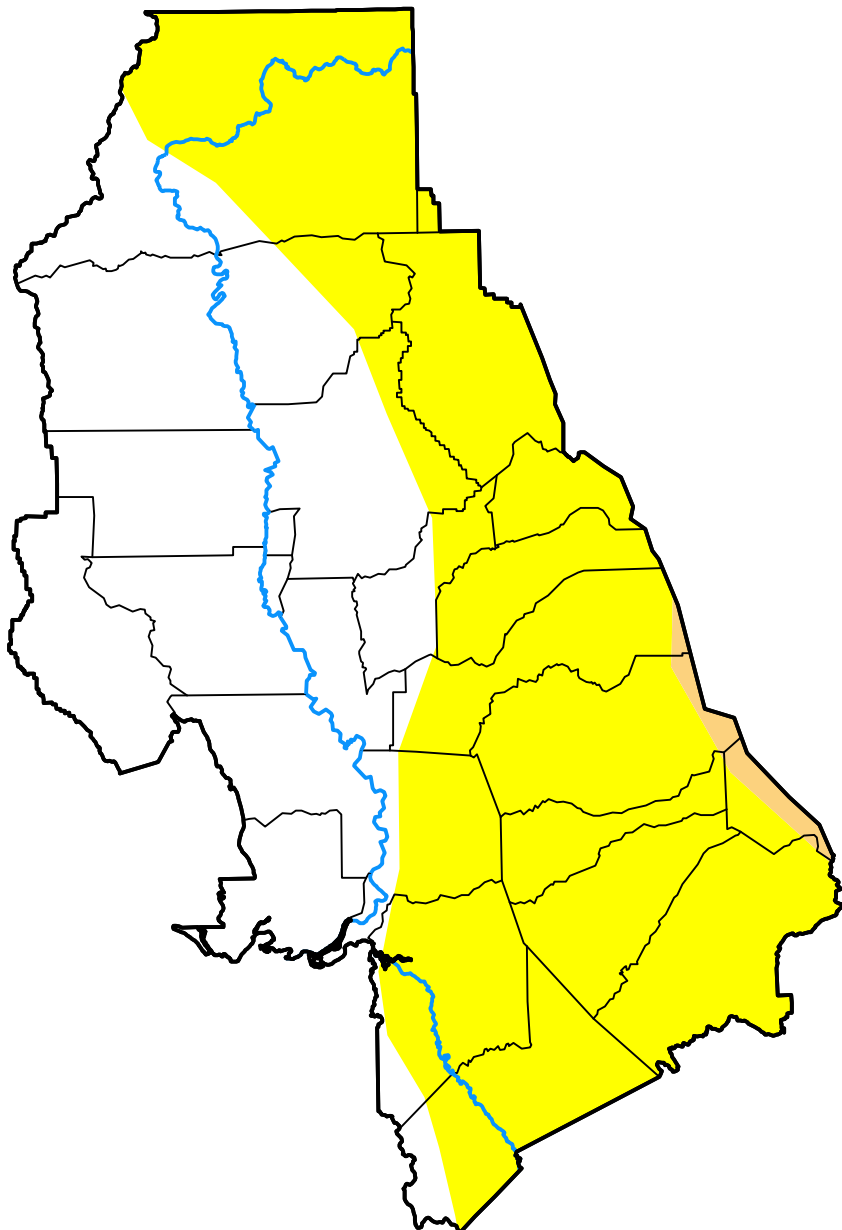


U.S. Drought Monitor

Sacramento, CA WFO

November 30, 2004
 (Released Thursday, Dec. 2, 2004)
 Valid 7 a.m. EST



Drought Conditions (Percent Area)

	None	D0-D4	D1-D4	D2-D4	D3-D4	D4
Current	43.20	56.80	1.06	0.00	0.00	0.00
Last Week <i>11-24-2004</i>	33.08	66.92	2.07	0.00	0.00	0.00
3 Months Ago <i>09-02-2004</i>	0.00	100.00	33.21	2.04	0.00	0.00
Start of Calendar Year <i>12-31-2003</i>	100.00	0.00	0.00	0.00	0.00	0.00
Start of Water Year <i>09-30-2004</i>	0.00	100.00	30.89	2.04	0.00	0.00
One Year Ago <i>12-04-2003</i>	96.47	3.53	0.00	0.00	0.00	0.00

Intensity:

- None
- D0 Abnormally Dry
- D1 Moderate Drought
- D2 Severe Drought
- D3 Extreme Drought
- D4 Exceptional Drought

The Drought Monitor focuses on broad-scale conditions. Local conditions may vary. For more information on the Drought Monitor, go to <https://droughtmonitor.unl.edu/About.aspx>

Author:

Douglas Le Comte
 CPC/NOAA

