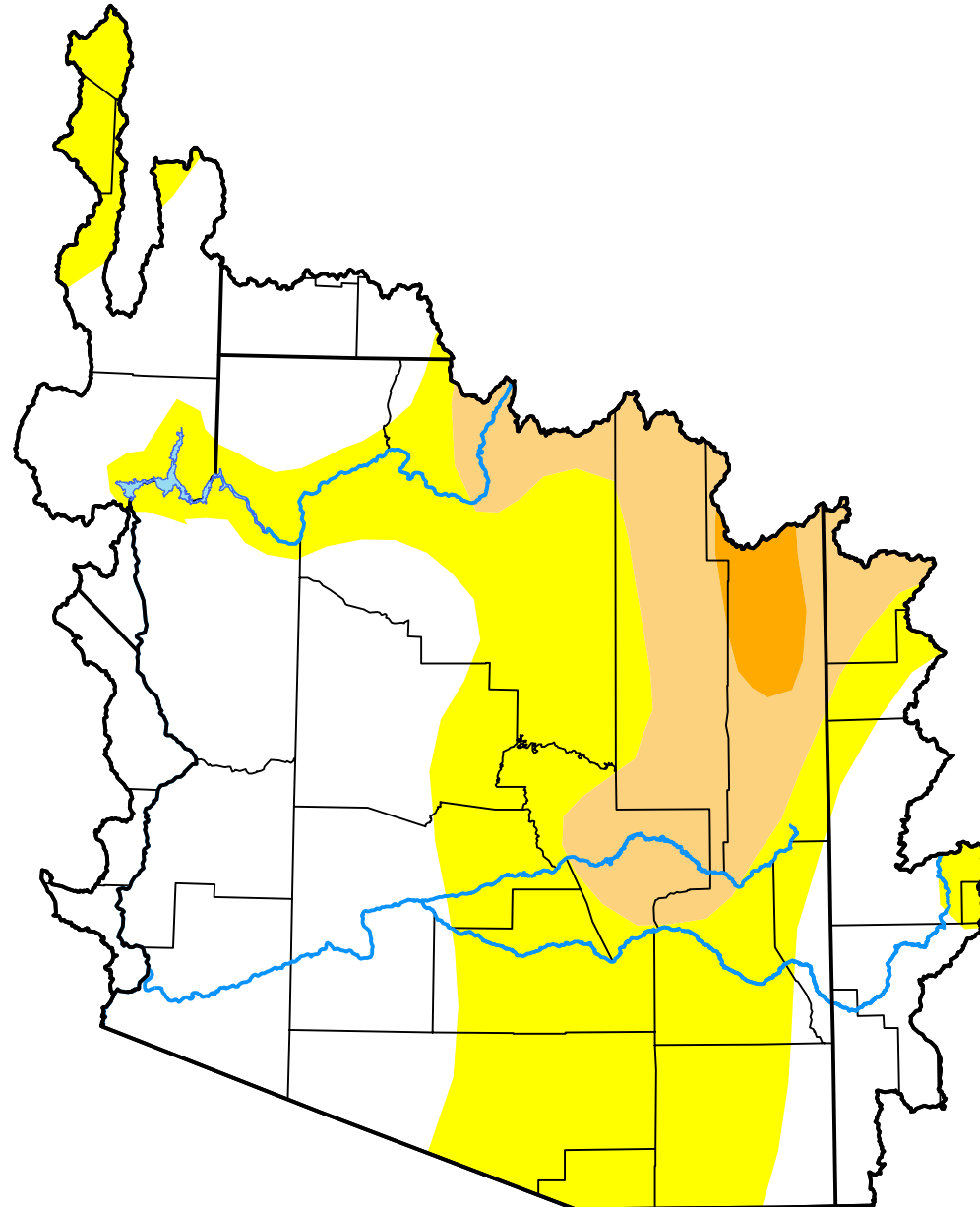


U.S. Drought Monitor

Lower Colorado Watershed

April 12, 2005
 (Released Thursday, Apr. 14, 2005)
 Valid 8 a.m. EDT



Drought Conditions (Percent Area)

	None	D0	D1	D2	D3	D4
Current	48.70	35.91	13.62	1.77	0.00	0.00
Last Week <i>04-07-2005</i>	37.54	33.46	23.80	5.20	0.00	0.00
3 Months Ago <i>01-13-2005</i>	0.00	24.82	38.61	25.55	11.03	0.00
Start of Calendar Year <i>01-06-2005</i>	0.00	12.48	41.97	33.63	11.92	0.00
Start of Water Year <i>09-30-2004</i>	0.00	7.23	8.10	45.80	38.86	0.00
One Year Ago <i>04-15-2004</i>	0.00	9.13	14.82	33.58	42.47	0.00

Intensity:

- None
- D0 Abnormally Dry
- D1 Moderate Drought
- D2 Severe Drought
- D3 Extreme Drought
- D4 Exceptional Drought

The Drought Monitor focuses on broad-scale conditions. Local conditions may vary. For more information on the Drought Monitor, go to <https://droughtmonitor.unl.edu/About.aspx>

Author:

David Miskus
 NOAA/NWS/NCEP/CPC

