

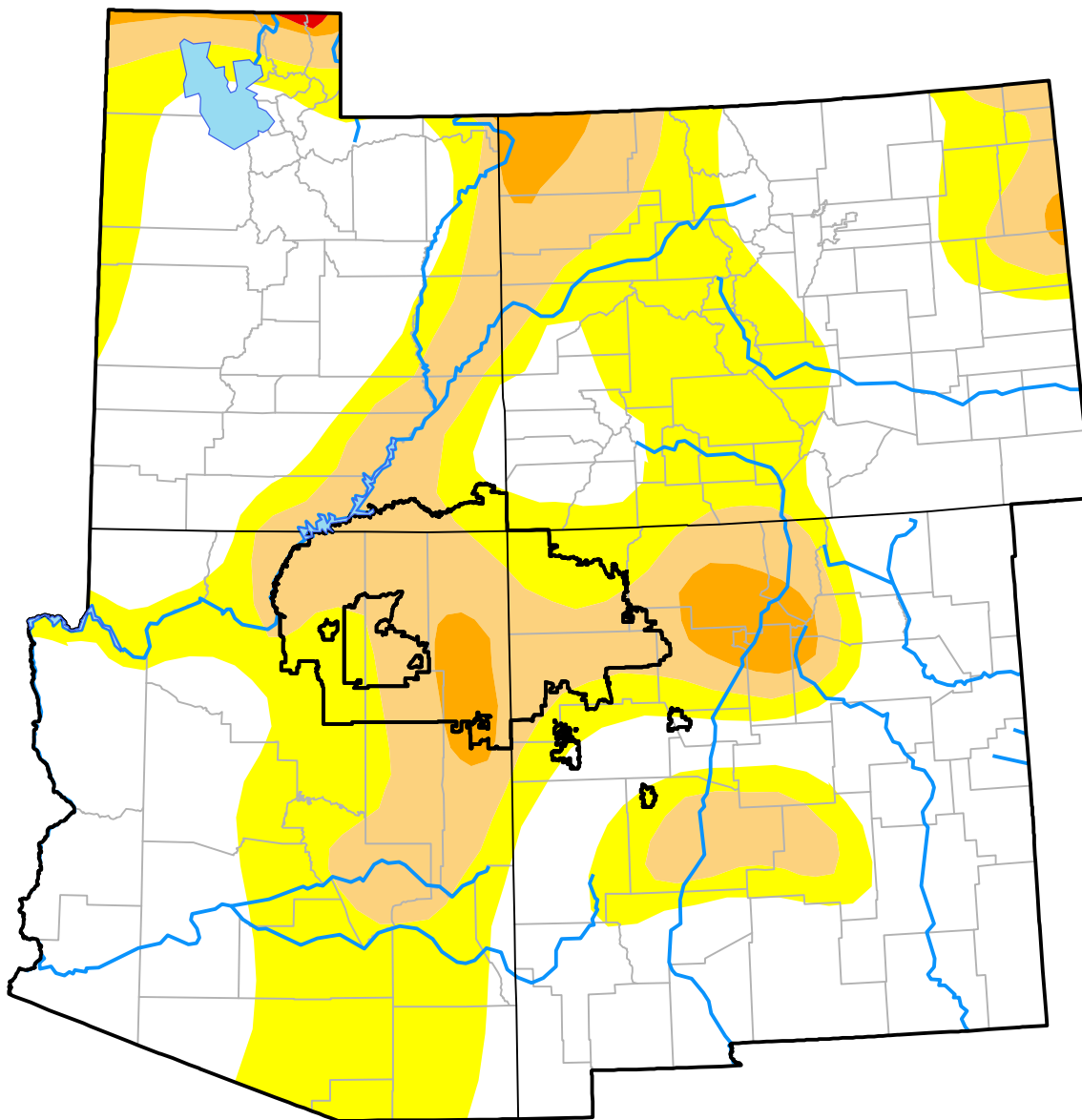
Nebraska RDEWS and Surrounding Areas

(Released Thursday, Apr. 14, 2005)

Valid 8 a.m. EDT

Drought Conditions (Percent Area)

	None	D0-D4	D1-D4	D2-D4	D3-D4	D4
Current	52.13	47.87	19.64	2.93	0.05	0.00
Last Week <i>04-07-2005</i>	36.06	63.94	28.43	5.45	0.01	0.00
3 Months Ago <i>01-13-2005</i>	14.63	85.37	63.56	29.19	8.00	0.11
Start of Calendar Year <i>01-06-2005</i>	14.63	85.37	66.76	34.05	11.09	0.15
Start of Water Year <i>09-30-2004</i>	10.13	89.87	77.07	60.22	25.44	0.30
One Year Ago <i>04-15-2004</i>	0.07	99.93	89.26	65.94	33.03	0.40



Intensity:

- None
- D0 Abnormally Dry
- D1 Moderate Drought
- D2 Severe Drought
- D3 Extreme Drought
- D4 Exceptional Drought

The Drought Monitor focuses on broad-scale conditions. Local conditions may vary. For more information on the Drought Monitor, go to <https://droughtmonitor.unl.edu/About.aspx>

Author:

David Miskus
NOAA/NWS/NCEP/CPC

