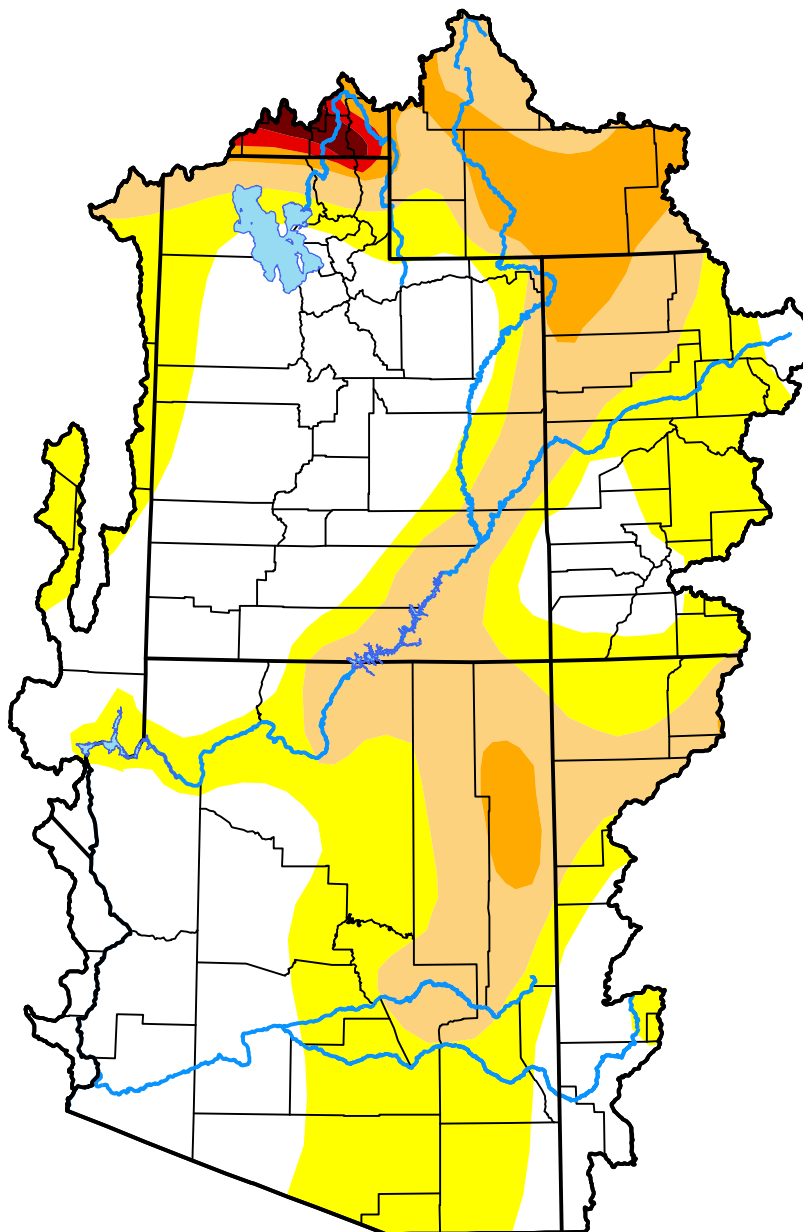


U.S. Drought Monitor

Colorado Basin RFC

April 12, 2005
 (Released Thursday, Apr. 14, 2005)
 Valid 8 a.m. EDT



Drought Conditions (Percent Area)

| | None | D0-D4 | D1-D4 | D2-D4 | D3-D4 | D4 |
|--|-------|--------|-------|-------|-------|------|
| Current | 41.00 | 59.00 | 27.71 | 7.21 | 0.87 | 0.40 |
| Last Week <i>04-07-2005</i> | 27.76 | 72.24 | 37.70 | 10.38 | 0.38 | 0.01 |
| 3 Months Ago <i>01-13-2005</i> | 0.27 | 99.73 | 77.49 | 38.32 | 9.46 | 0.62 |
| Start of Calendar Year <i>01-06-2005</i> | 0.27 | 99.73 | 84.69 | 46.63 | 13.93 | 0.74 |
| Start of Water Year <i>09-30-2004</i> | 0.08 | 99.92 | 95.60 | 83.03 | 39.66 | 1.05 |
| One Year Ago <i>04-15-2004</i> | 0.00 | 100.00 | 92.05 | 74.92 | 38.52 | 1.12 |

Intensity:

- None
- D0 Abnormally Dry
- D1 Moderate Drought
- D2 Severe Drought
- D3 Extreme Drought
- D4 Exceptional Drought

The Drought Monitor focuses on broad-scale conditions. Local conditions may vary. For more information on the Drought Monitor, go to <https://droughtmonitor.unl.edu/About.aspx>

Author:

David Miskus
 NOAA/NWS/NCEP/CPC

