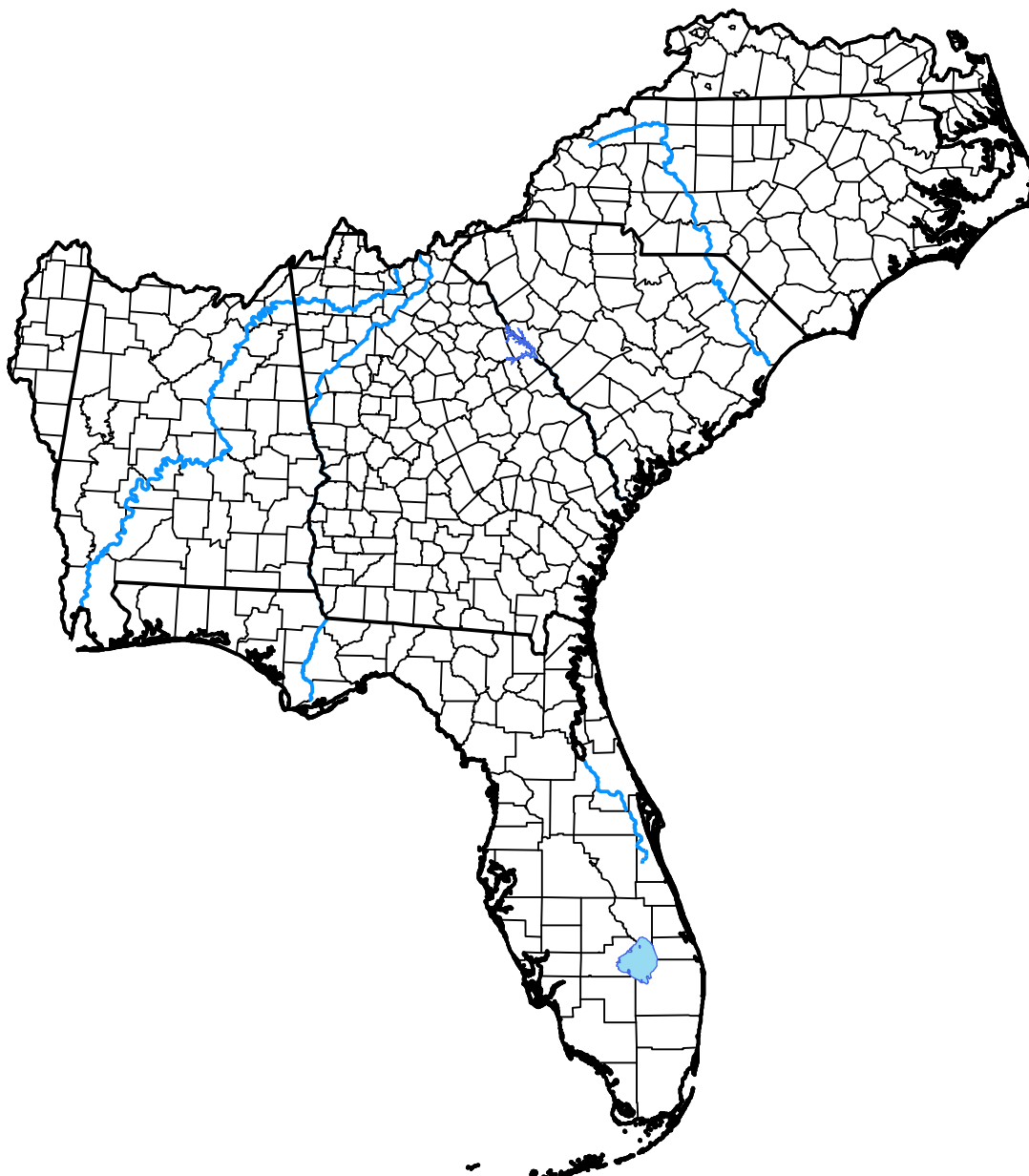


U.S. Drought Monitor Southeast RFC

April 12, 2005
(Released Thursday, Apr. 14, 2005)

Valid 8 a.m. EDT



Drought Conditions (Percent Area)

	None	D0-D4	D1-D4	D2-D4	D3-D4	D4
Current	100.00	0.00	0.00	0.00	0.00	0.00
Last Week <i>04-07-2005</i>	100.00	0.00	0.00	0.00	0.00	0.00
3 Months Ago <i>01-13-2005</i>	96.54	3.46	0.00	0.00	0.00	0.00
Start of Calendar Year <i>01-06-2005</i>	96.54	3.46	0.00	0.00	0.00	0.00
Start of Water Year <i>09-30-2004</i>	100.00	0.00	0.00	0.00	0.00	0.00
One Year Ago <i>04-15-2004</i>	36.22	63.78	0.00	0.00	0.00	0.00

Intensity:

- None
- D0 Abnormally Dry
- D1 Moderate Drought
- D2 Severe Drought
- D3 Extreme Drought
- D4 Exceptional Drought

The Drought Monitor focuses on broad-scale conditions. Local conditions may vary. For more information on the Drought Monitor, go to <https://droughtmonitor.unl.edu/About.aspx>

Author:

David Miskus
NOAA/NWS/NCEP/CPC

