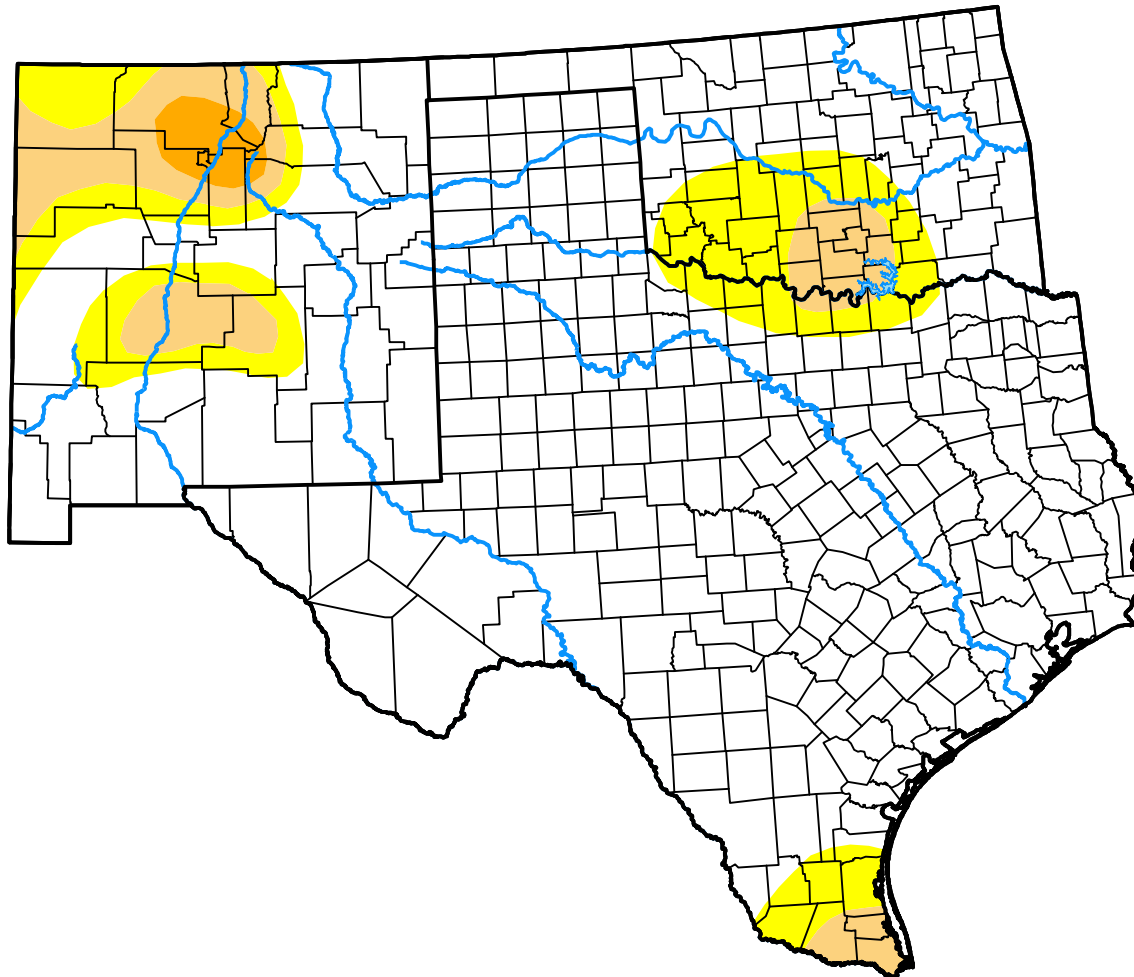


U.S. Drought Monitor

Southern Plains RDEWS

April 12, 2005
 (Released Thursday, Apr. 14, 2005)
 Valid 8 a.m. EDT



Drought Conditions (Percent Area)

	None	D0-D4	D1-D4	D2-D4	D3-D4	D4
Current	82.21	17.79	7.51	1.12	0.00	0.00
Last Week <i>04-05-2005</i>	77.98	22.02	7.46	2.16	0.00	0.00
3 Months Ago <i>01-11-2005</i>	81.49	18.51	16.15	9.89	3.43	0.00
Start of Calendar Year <i>01-04-2005</i>	81.49	18.51	16.25	9.88	3.44	0.00
Start of Water Year <i>09-28-2004</i>	76.41	23.59	18.07	13.46	2.05	0.00
One Year Ago <i>04-13-2004</i>	60.98	39.02	25.61	14.14	3.11	0.00

Intensity:

- None
- D0 Abnormally Dry
- D1 Moderate Drought
- D2 Severe Drought
- D3 Extreme Drought
- D4 Exceptional Drought

The Drought Monitor focuses on broad-scale conditions. Local conditions may vary. For more information on the Drought Monitor, go to <https://droughtmonitor.unl.edu/About.aspx>

Author:

David Miskus
 NOAA/NWS/NCEP/CPC

