

U.S. Drought Monitor

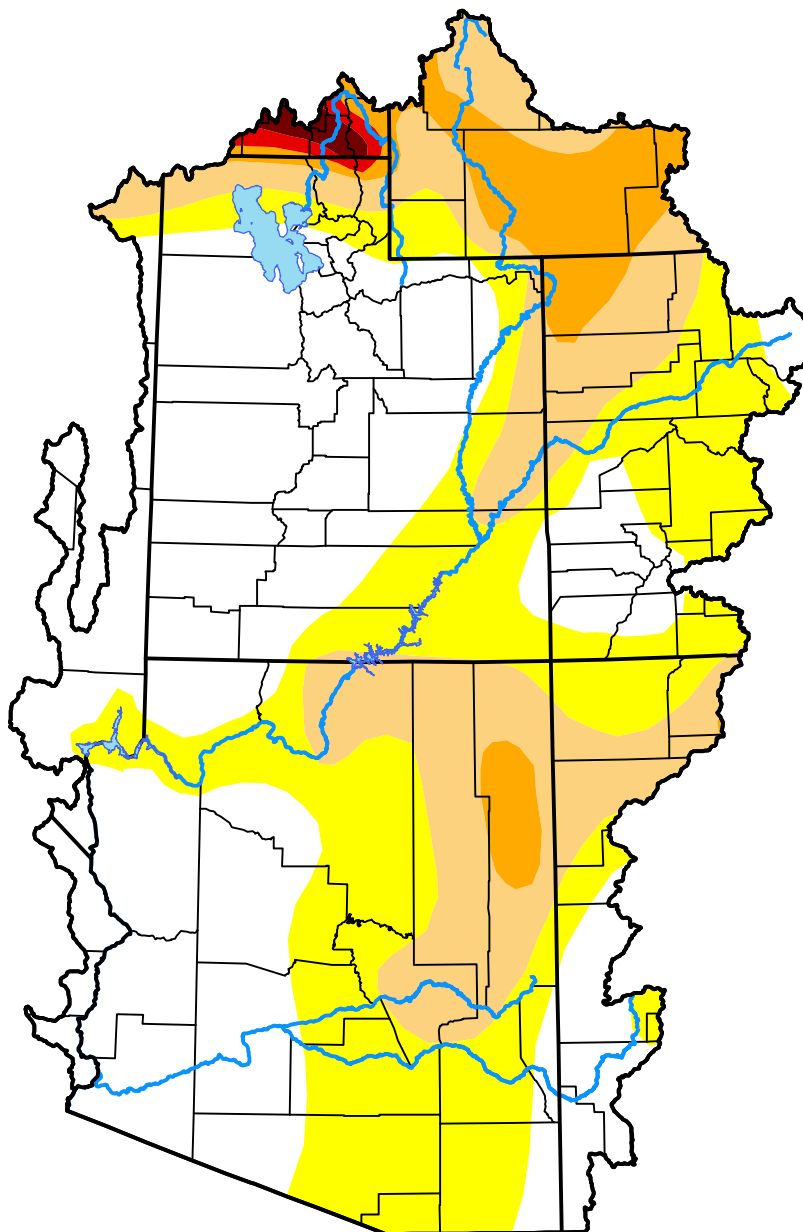
Colorado Basin RFC

April 19, 2005
(Released Thursday, Apr. 21, 2005)

Valid 8 a.m. EDT

Drought Conditions (Percent Area)

	None	D0-D4	D1-D4	D2-D4	D3-D4	D4
Current	44.07	55.93	25.39	7.21	0.87	0.40
Last Week <i>04-14-2005</i>	41.00	59.00	27.71	7.21	0.87	0.40
3 Months Ago <i>01-20-2005</i>	2.88	97.12	75.57	37.46	7.63	0.24
Start of Calendar Year <i>01-06-2005</i>	0.27	99.73	84.69	46.63	13.93	0.74
Start of Water Year <i>09-30-2004</i>	0.08	99.92	95.60	83.03	39.66	1.05
One Year Ago <i>04-22-2004</i>	0.00	100.00	92.05	74.92	38.52	1.12



Intensity:

- None
- D0 Abnormally Dry
- D1 Moderate Drought
- D2 Severe Drought
- D3 Extreme Drought
- D4 Exceptional Drought

The Drought Monitor focuses on broad-scale conditions. Local conditions may vary. For more information on the Drought Monitor, go to <https://droughtmonitor.unl.edu/About.aspx>

Author:

Richard Tinker
 CPC/NOAA/NWS/NCEP



droughtmonitor.unl.edu