

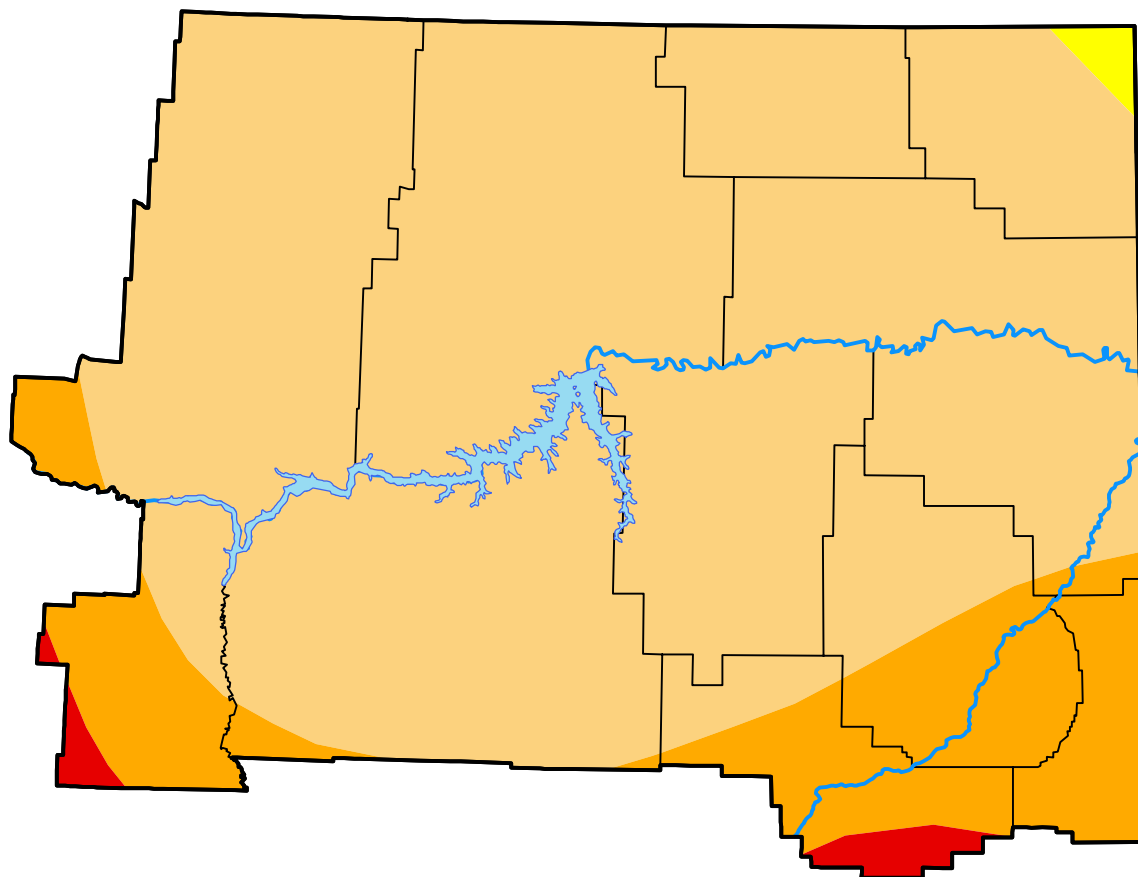
U.S. Drought Monitor

Glasgow, MT WFO

April 19, 2005
 (Released Thursday, Apr. 21, 2005)
 Valid 8 a.m. EDT

Drought Conditions (Percent Area)

	None	D0-D4	D1-D4	D2-D4	D3-D4	D4
Current	0.00	100.00	99.50	16.22	1.25	0.00
Last Week <i>04-14-2005</i>	0.00	100.00	99.50	16.19	1.28	0.00
3 Months Ago <i>01-20-2005</i>	0.00	100.00	54.21	16.25	2.00	0.00
Start of Calendar Year <i>01-06-2005</i>	0.00	100.00	49.91	19.66	2.00	0.00
Start of Water Year <i>09-30-2004</i>	20.54	79.46	39.92	14.45	1.65	0.00
One Year Ago <i>04-22-2004</i>	10.25	89.75	64.67	27.29	1.07	0.00



Intensity:



The Drought Monitor focuses on broad-scale conditions. Local conditions may vary. For more information on the Drought Monitor, go to <https://droughtmonitor.unl.edu/About.aspx>

Author:

Richard Tinker
 CPC/NOAA/NWS/NCEP



droughtmonitor.unl.edu