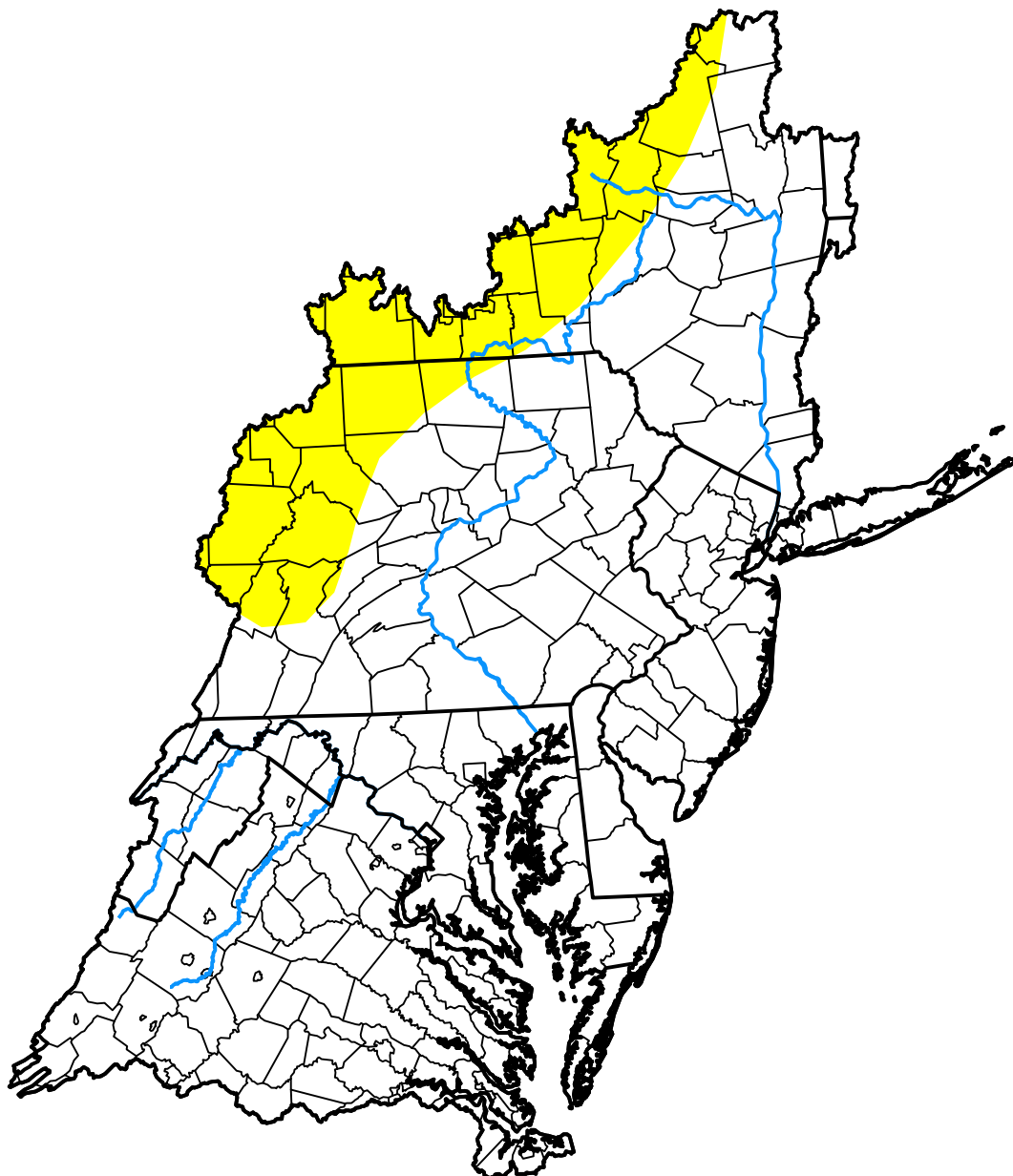


U.S. Drought Monitor

Mid Atlantic Watershed

June 7, 2005
 (Released Thursday, Jun. 9, 2005)
 Valid 8 a.m. EDT



Drought Conditions (Percent Area)

	None	D0	D1	D2	D3	D4
Current	84.84	15.16	0.00	0.00	0.00	0.00
Last Week <i>06-02-2005</i>	84.84	15.16	0.00	0.00	0.00	0.00
3 Months Ago <i>03-10-2005</i>	99.71	0.29	0.00	0.00	0.00	0.00
Start of Calendar Year <i>01-06-2005</i>	100.00	0.00	0.00	0.00	0.00	0.00
Start of Water Year <i>09-30-2004</i>	100.00	0.00	0.00	0.00	0.00	0.00
One Year Ago <i>06-10-2004</i>	100.00	0.00	0.00	0.00	0.00	0.00

Intensity:



The Drought Monitor focuses on broad-scale conditions. Local conditions may vary. For more information on the Drought Monitor, go to <https://droughtmonitor.unl.edu/About.aspx>

Author:

Michael Hayes
 National Drought Mitigation Center



droughtmonitor.unl.edu