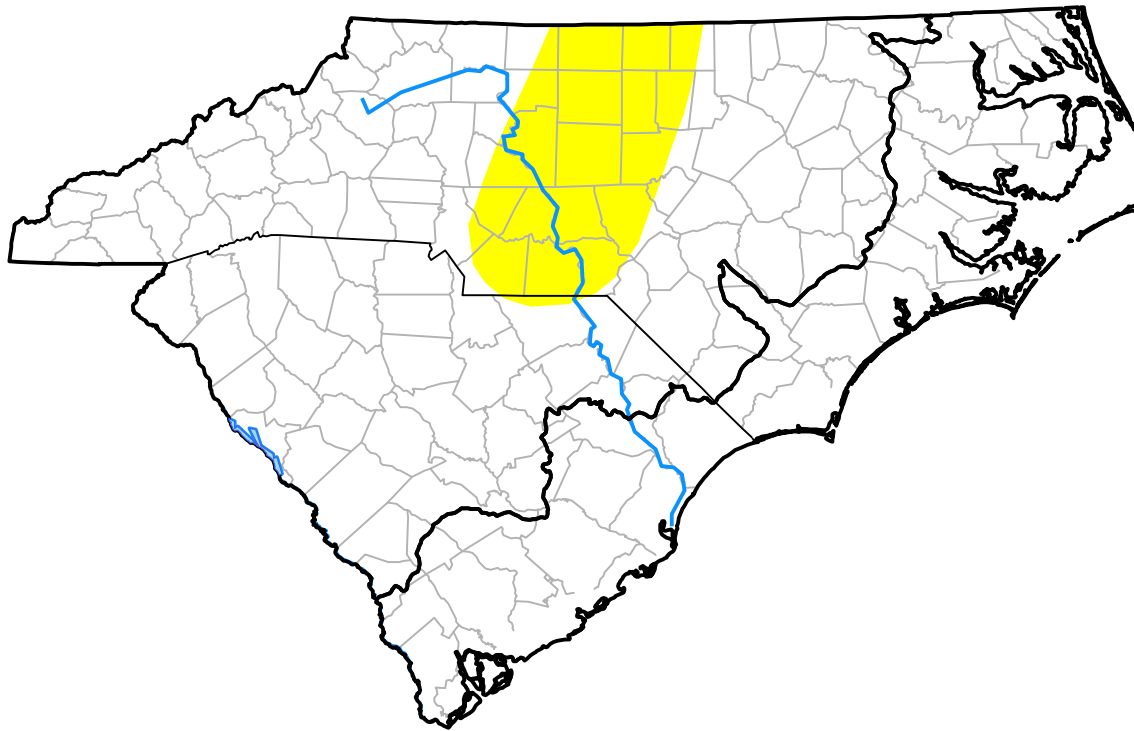


# Carolinas RDEWS and Surrounding Areas

(Released Thursday, Jun. 9, 2005)

10:00 a.m. EDT



Drought Conditions (Percent Area)

	None	D0	D1	D2	D3	D4
<b>Current</b>	89.02	10.98	0.00	0.00	0.00	0.00
<b>Last Week</b> <i>06-02-2005</i>	85.76	14.24	0.00	0.00	0.00	0.00
<b>3 Months Ago</b> <i>03-10-2005</i>	59.90	40.10	0.00	0.00	0.00	0.00
<b>Start of Calendar Year</b> <i>01-06-2005</i>	100.00	0.00	0.00	0.00	0.00	0.00
<b>Start of Water Year</b> <i>09-30-2004</i>	100.00	0.00	0.00	0.00	0.00	0.00
<b>One Year Ago</b> <i>06-10-2004</i>	44.15	22.89	22.63	10.33	0.00	0.00

Intensity:

- None
- D0 Abnormally Dry
- D1 Moderate Drought
- D2 Severe Drought
- D3 Extreme Drought
- D4 Exceptional Drought

The Drought Monitor focuses on broad-scale conditions. Local conditions may vary. For more information on the Drought Monitor, go to <https://droughtmonitor.unl.edu/About.aspx>

Author:

Michael Hayes  
National Drought Mitigation Center

