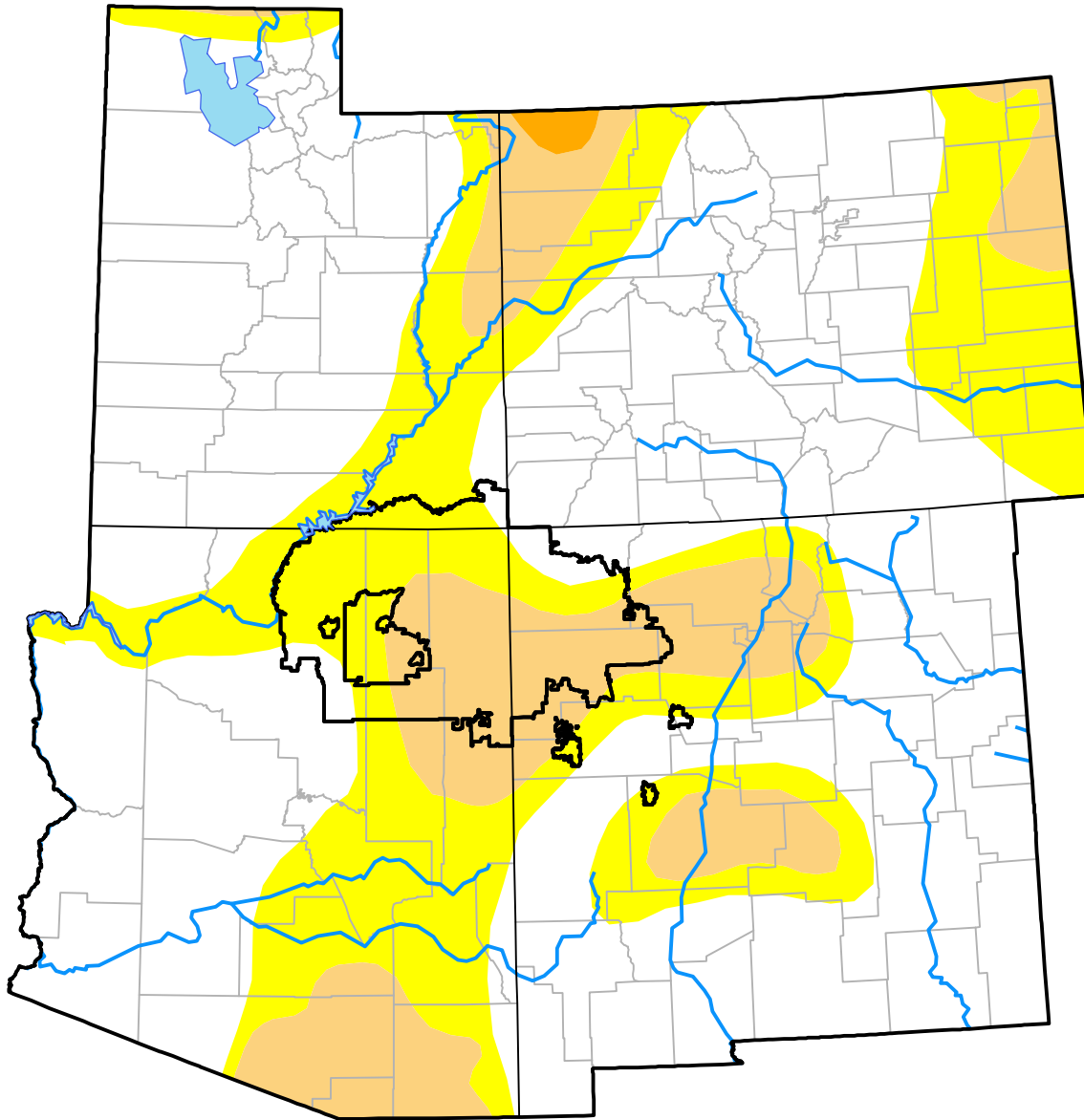


# U.S. Drought Monitor

## Navajo RDEWS

**June 7, 2005**  
 (Released Thursday, Jun. 9, 2005)  
 Valid 8 a.m. EDT



*Drought Conditions (Percent Area)*

	None	D0-D4	D1-D4	D2-D4	D3-D4	D4
<b>Current</b>	10.91	89.09	45.50	0.00	0.00	0.00
<b>Last Week</b> <i>06-02-2005</i>	10.91	89.09	45.50	0.00	0.00	0.00
<b>3 Months Ago</b> <i>03-10-2005</i>	0.00	100.00	88.74	36.80	0.00	0.00
<b>Start of Calendar Year</b> <i>01-06-2005</i>	0.00	100.00	100.00	98.71	69.99	0.00
<b>Start of Water Year</b> <i>09-30-2004</i>	0.00	100.00	100.00	99.85	68.96	0.00
<b>One Year Ago</b> <i>06-10-2004</i>	0.00	100.00	87.30	77.50	61.22	0.00

***Intensity:***

- None
- D0 Abnormally Dry
- D1 Moderate Drought
- D2 Severe Drought
- D3 Extreme Drought
- D4 Exceptional Drought

*The Drought Monitor focuses on broad-scale conditions. Local conditions may vary. For more information on the Drought Monitor, go to <https://droughtmonitor.unl.edu/About.aspx>*

***Author:***

Michael Hayes  
 National Drought Mitigation Center

