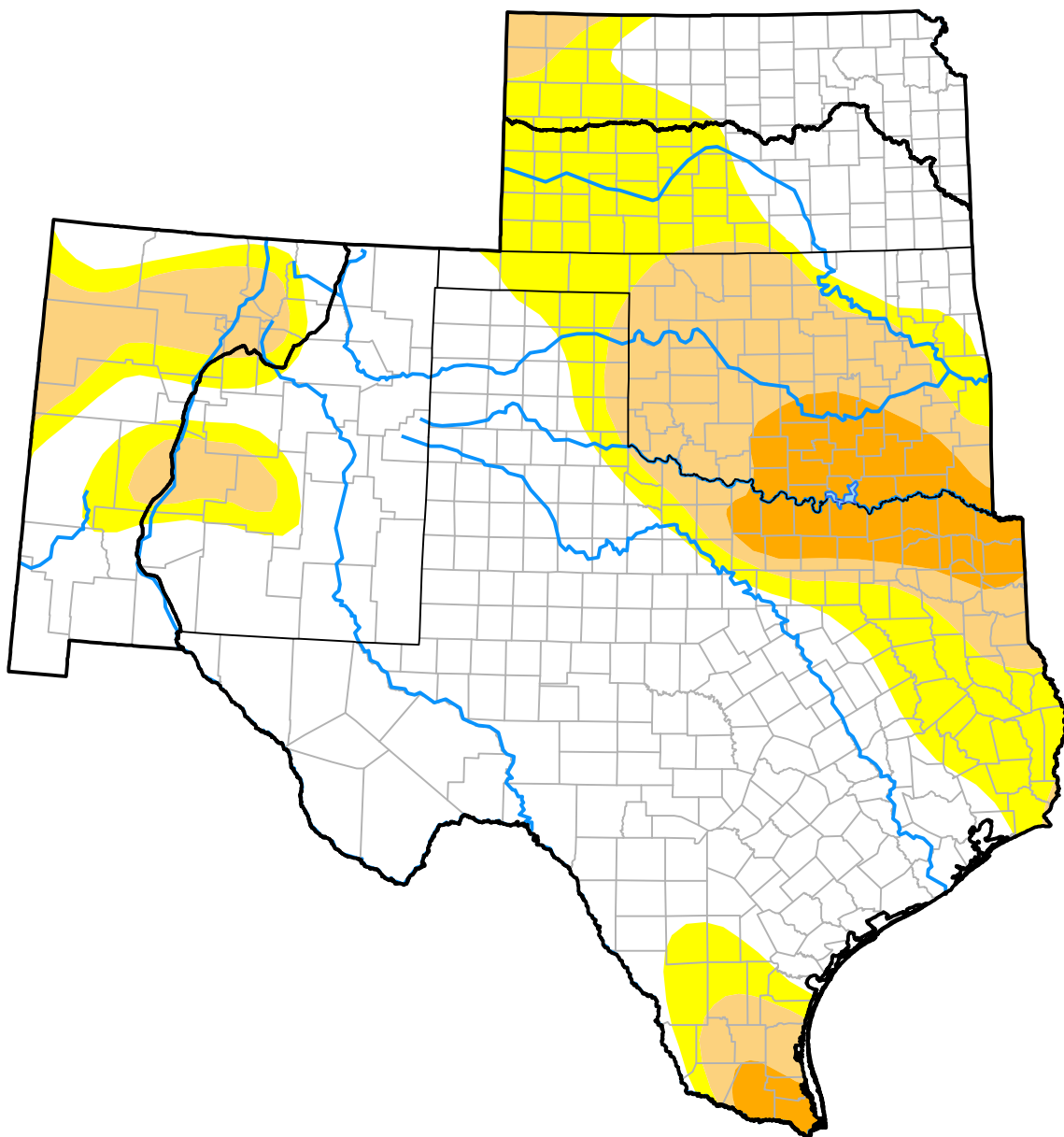


U.S. Drought Monitor

Southern Plains RDEWS

June 7, 2005
 (Released Thursday, Jun. 9, 2005)
 Valid 8 a.m. EDT



Drought Conditions (Percent Area)

	None	D0-D4	D1-D4	D2-D4	D3-D4	D4
Current	60.84	39.16	23.86	6.94	0.00	0.00
Last Week <i>06-02-2005</i>	58.91	41.09	21.29	3.66	0.00	0.00
3 Months Ago <i>03-10-2005</i>	81.20	18.80	8.50	3.29	0.60	0.00
Start of Calendar Year <i>01-06-2005</i>	81.49	18.51	16.25	9.88	3.44	0.00
Start of Water Year <i>09-30-2004</i>	76.41	23.59	18.07	13.46	2.05	0.00
One Year Ago <i>06-10-2004</i>	34.64	65.36	35.44	14.00	3.09	0.00

Intensity:

- None
- D0 Abnormally Dry
- D1 Moderate Drought
- D2 Severe Drought
- D3 Extreme Drought
- D4 Exceptional Drought

The Drought Monitor focuses on broad-scale conditions. Local conditions may vary. For more information on the Drought Monitor, go to <https://droughtmonitor.unl.edu/About.aspx>

Author:

Michael Hayes
 National Drought Mitigation Center

