

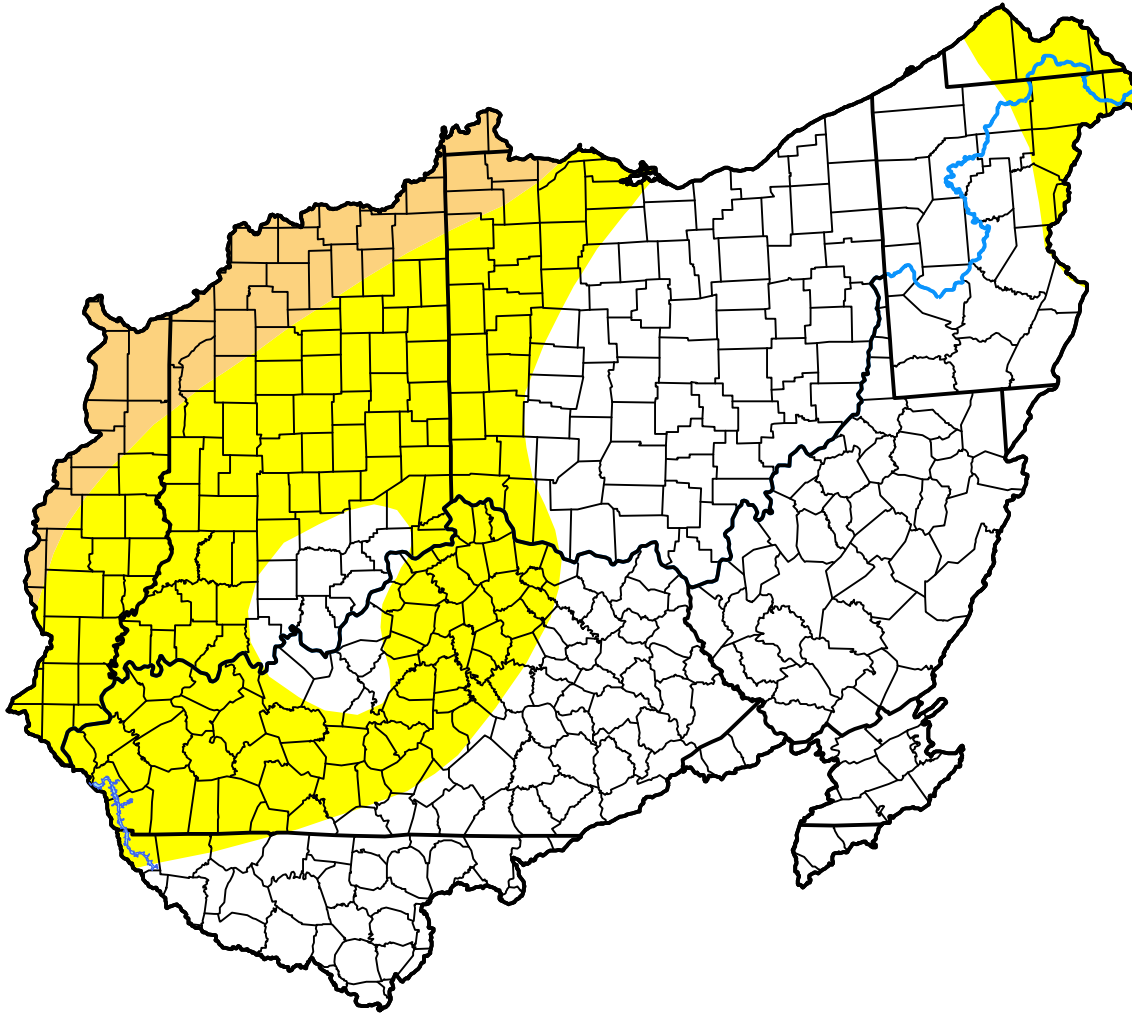
U.S. Drought Monitor

Ohio RFC

June 7, 2005
 (Released Thursday, Jun. 9, 2005)
 Valid 8 a.m. EDT

Drought Conditions (Percent Area)

	None	D0-D4	D1-D4	D2-D4	D3-D4	D4
Current	57.59	42.41	7.14	0.00	0.00	0.00
Last Week <i>06-02-2005</i>	83.22	16.78	0.55	0.00	0.00	0.00
3 Months Ago <i>03-10-2005</i>	100.00	0.00	0.00	0.00	0.00	0.00
Start of Calendar Year <i>01-06-2005</i>	100.00	0.00	0.00	0.00	0.00	0.00
Start of Water Year <i>09-30-2004</i>	99.53	0.47	0.00	0.00	0.00	0.00
One Year Ago <i>06-10-2004</i>	99.89	0.11	0.00	0.00	0.00	0.00



Intensity:

- None
- D0 Abnormally Dry
- D1 Moderate Drought
- D2 Severe Drought
- D3 Extreme Drought
- D4 Exceptional Drought

The Drought Monitor focuses on broad-scale conditions. Local conditions may vary. For more information on the Drought Monitor, go to <https://droughtmonitor.unl.edu/About.aspx>

Author:

Michael Hayes
 National Drought Mitigation Center

