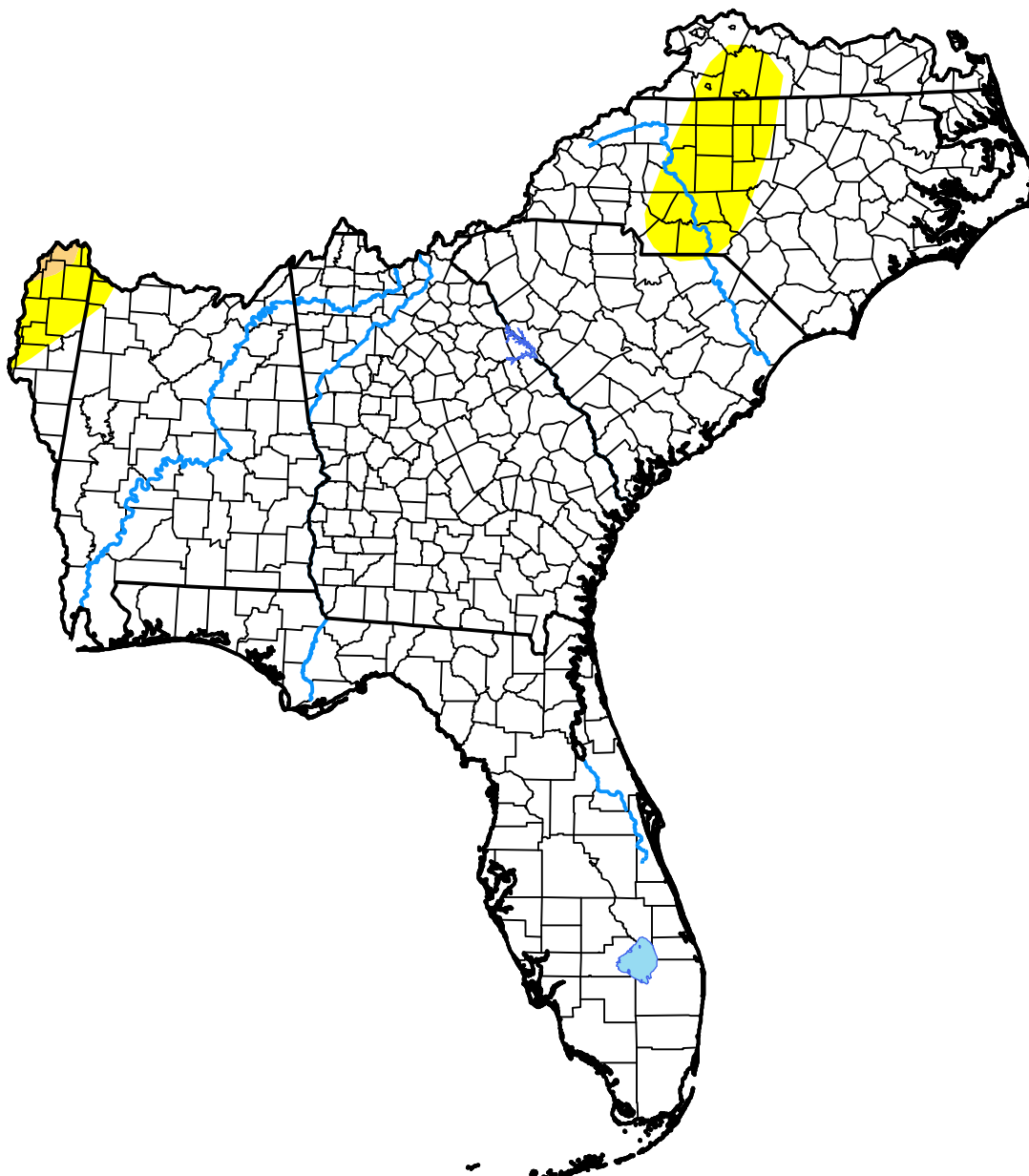


U.S. Drought Monitor Southeast RFC

June 7, 2005
(Released Thursday, Jun. 9, 2005)
Valid 8 a.m. EDT



Drought Conditions (Percent Area)

	None	D0-D4	D1-D4	D2-D4	D3-D4	D4
Current	94.03	5.97	0.22	0.00	0.00	0.00
Last Week <i>06-02-2005</i>	93.26	6.74	0.16	0.00	0.00	0.00
3 Months Ago <i>03-10-2005</i>	79.69	20.31	0.00	0.00	0.00	0.00
Start of Calendar Year <i>01-06-2005</i>	96.54	3.46	0.00	0.00	0.00	0.00
Start of Water Year <i>09-30-2004</i>	100.00	0.00	0.00	0.00	0.00	0.00
One Year Ago <i>06-10-2004</i>	43.43	56.57	29.30	13.48	0.00	0.00

Intensity:



The Drought Monitor focuses on broad-scale conditions. Local conditions may vary. For more information on the Drought Monitor, go to <https://droughtmonitor.unl.edu/About.aspx>

Author:

Michael Hayes
National Drought Mitigation Center



droughtmonitor.unl.edu