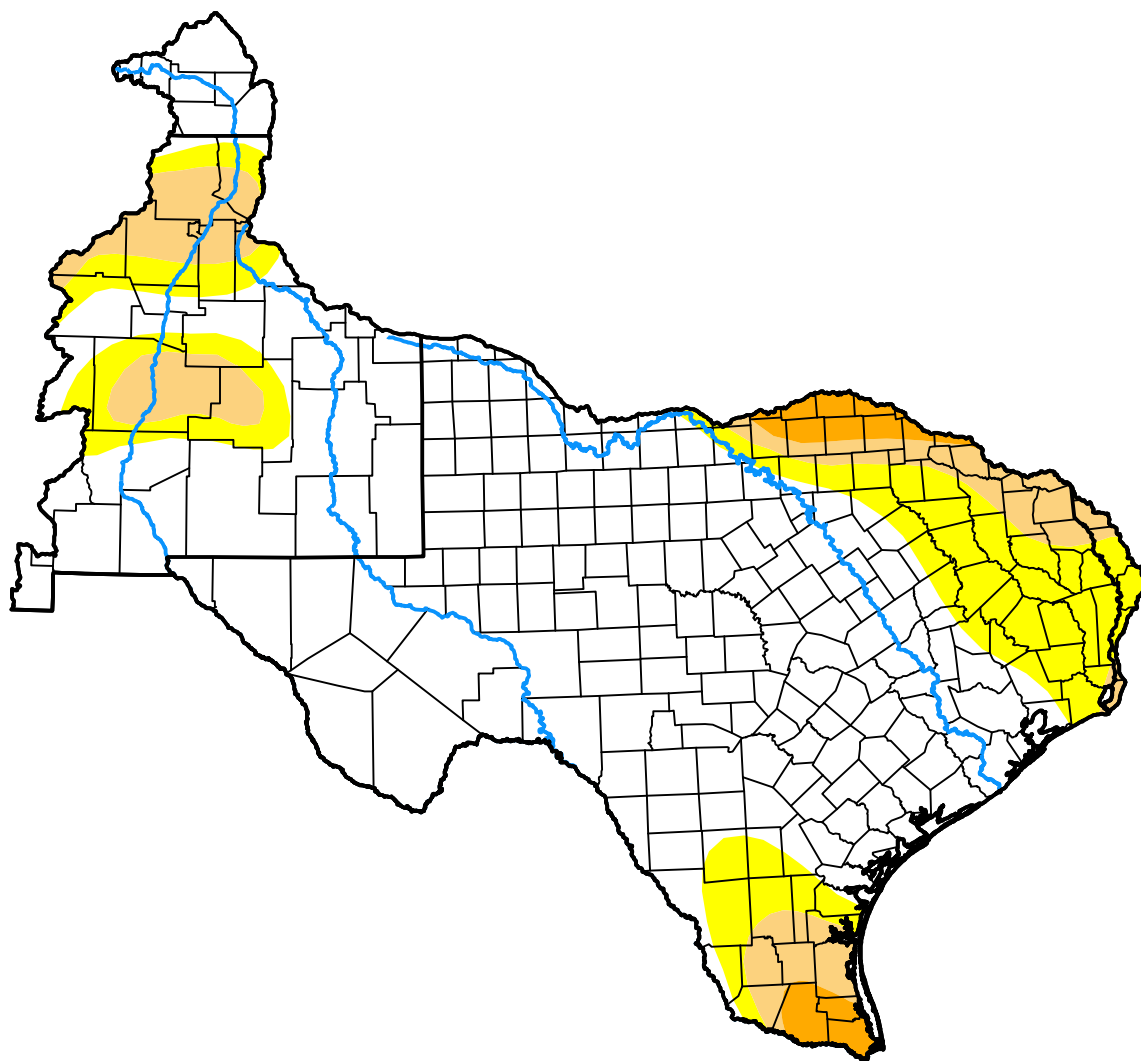


U.S. Drought Monitor West Gulf RFC

June 7, 2005
(Released Thursday, Jun. 9, 2005)
Valid 8 a.m. EDT



Drought Conditions (Percent Area)

	None	D0-D4	D1-D4	D2-D4	D3-D4	D4
Current	73.17	26.83	11.53	2.35	0.00	0.00
Last Week <i>06-02-2005</i>	71.50	28.50	9.25	1.81	0.00	0.00
3 Months Ago <i>03-10-2005</i>	82.26	17.74	7.17	2.92	0.88	0.00
Start of Calendar Year <i>01-06-2005</i>	80.75	19.25	15.11	7.34	2.56	0.00
Start of Water Year <i>09-30-2004</i>	74.72	25.28	17.42	12.29	1.23	0.00
One Year Ago <i>06-10-2004</i>	44.60	55.40	28.71	12.97	2.48	0.00

Intensity:



The Drought Monitor focuses on broad-scale conditions. Local conditions may vary. For more information on the Drought Monitor, go to <https://droughtmonitor.unl.edu/About.aspx>

Author:

Michael Hayes
National Drought Mitigation Center

